



Chipsmall Limited consists of a professional team with an average of over 10 year of expertise in the distribution of electronic components. Based in Hongkong, we have already established firm and mutual-benefit business relationships with customers from,Europe,America and south Asia,supplying obsolete and hard-to-find components to meet their specific needs.

With the principle of “Quality Parts,Customers Priority,Honest Operation,and Considerate Service”,our business mainly focus on the distribution of electronic components. Line cards we deal with include Microchip,ALPS,ROHM,Xilinx,Pulse,ON,Everlight and Freescale. Main products comprise IC,Modules,Potentiometer,IC Socket,Relay,Connector.Our parts cover such applications as commercial,industrial, and automotives areas.

We are looking forward to setting up business relationship with you and hope to provide you with the best service and solution. Let us make a better world for our industry!



Contact us

Tel: +86-755-8981 8866 Fax: +86-755-8427 6832

Email & Skype: info@chipsmall.com Web: www.chipsmall.com

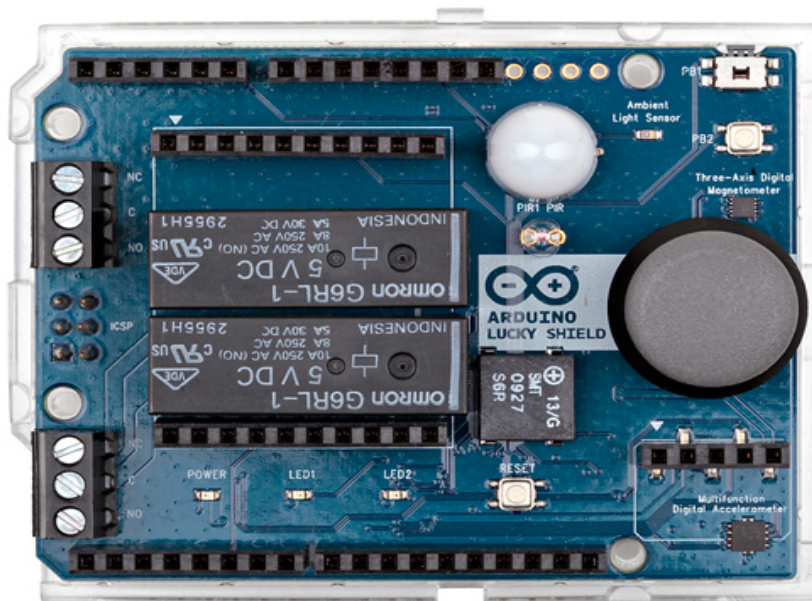
Address: A1208, Overseas Decoration Building, #122 Zhenhua RD., Futian, Shenzhen, China





Arduino LUCKY SHIELD

You are lucky with Arduino Lucky Shield! A single shield with many sensors.



Arduino Lucky Shield is an easy way to use your Arduino boards, that grants you access to barometric pressure, relative altitude, luminosity, temperature, motion and presence. You can also turn it into a simple controller and OLED (organic light-emitting diode) display system. It is the perfect shield for IoT.

Description

Operating voltage: 3.3 VDC / 5 VDC

LEDs: POWER (Green) . LED1 (Yellow) . LED2 (Yellow)

Joystick: 5-directional tact switch

Buzzer: MINIMUM SPL 90 dBA RESONANT FREQUENCY 500 Hz

Relay: 50000 operations min (NC) at 250VAC, 8A (resistive load) 50000 operations min at 30 VDC, 5A (resistive load)

PIR sensor: Encapsulation type TO5, Spectral response 7~14 μ m, Transmittance \geq 77%, Field of view 139°

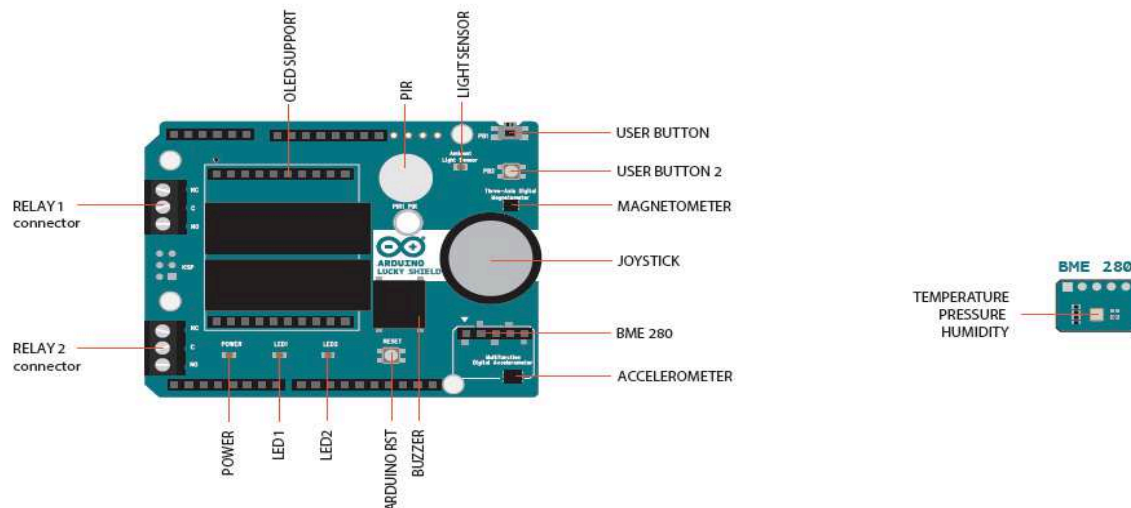
Ambient light sensor: Peak sensitivity wavelength 630nm , Operating temperature -40 ~ +85°C

Temperature / humidity: Operating temperature -40 ~ +85°C

Pressure sensor: Operating pressure range 300 ~ 1100 hPa

Magnetometer: E-compass, Full-scale range \pm 1000 T, Output data rates (ODR) up to 80 Hz

Accelerometer: G-sensor, Ultra-fast data output time, \sim 700 μ s \pm 8g full-scale range 3-axis, 45° tilt outputs



Power

The shield doesn't need external power. It will be provided by the Arduino base board, through the 5V and 3.3V pins of the base.

Physical Characteristics

The maximum length and width of the Lucky Shield PCB are 2.7 by 2.1 inches, respectively (68.6 x 53.4 mm). Four screw holes allow the Shield to be attached to a surface or case. Note that the distance between digital pins 7 and 8 is 160 mil (0.16"), not an even multiple of the 100 mil spacing of the other pins.

Compatible Boards

The shield is compatible with all Arduino board 5V and 3.3V standards.

Overview

Arduino Lucky Shield is an easy way to use your Arduino boards, that grants you access to barometric pressure, relative altitude, luminosity, temperature, motion and presence. You can also turn it into a simple controller and OLED display system. It is the perfect shield for IoT.

FEATURES		GENERAL	
Relays	OMRON G6RL-1 (5V DC)	Operating Voltage	3.3 V / 5 V
PIR Sensor	MOSDESIGN M7616	Extra	DogOLED support
Ambient Light Sensor	EVERLIGHT ALS-PT19-315C/L177/TR8	PCB size	53 x 68.5 mm
Humidity Sensor	BOSCH SENSORTEC BME 280	Weight	0.054 Kg
Temperature Sensor	BOSCH SENSORTEC BME 280	Product Code	A000125
Pressure sensor	BOSCH SENSORTEC BME 280		
3-axis magnetometer	NXP MAG3110		
3 Axis accelerometer	NXP MMA8491Q		
Buzzer	PUI AUDIO SMT-0927-S-6-R		
Joystick	5-directional tact switch		