



Chipsmall Limited consists of a professional team with an average of over 10 year of expertise in the distribution of electronic components. Based in Hongkong, we have already established firm and mutual-benefit business relationships with customers from,Europe,America and south Asia,supplying obsolete and hard-to-find components to meet their specific needs.

With the principle of “Quality Parts,Customers Priority,Honest Operation,and Considerate Service”,our business mainly focus on the distribution of electronic components. Line cards we deal with include Microchip,ALPS,ROHM,Xilinx,Pulse,ON,Everlight and Freescale. Main products comprise IC,Modules,Potentiometer,IC Socket,Relay,Connector.Our parts cover such applications as commercial,industrial, and automotives areas.

We are looking forward to setting up business relationship with you and hope to provide you with the best service and solution. Let us make a better world for our industry!



Contact us

Tel: +86-755-8981 8866 Fax: +86-755-8427 6832

Email & Skype: info@chipsmall.com Web: www.chipsmall.com

Address: A1208, Overseas Decoration Building, #122 Zhenhua RD., Futian, Shenzhen, China



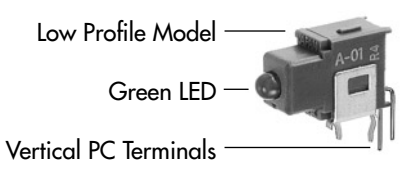
TYPICAL INDICATOR ORDERING EXAMPLE



Models	
01	Low .079" (2.0mm) Profile
02	High .291" (7.4mm) Profile

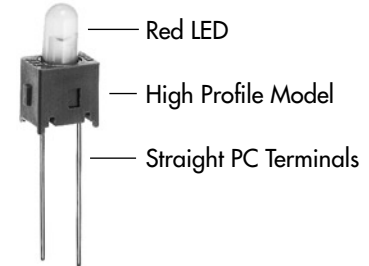
PC Terminals	
For 01 Model	
P	Straight
B	Straight with Bracket
H	Right Angle
V	Vertical
For 02 Model	
P	Straight

LED Colors	
C	Red
E	Yellow
F	Green



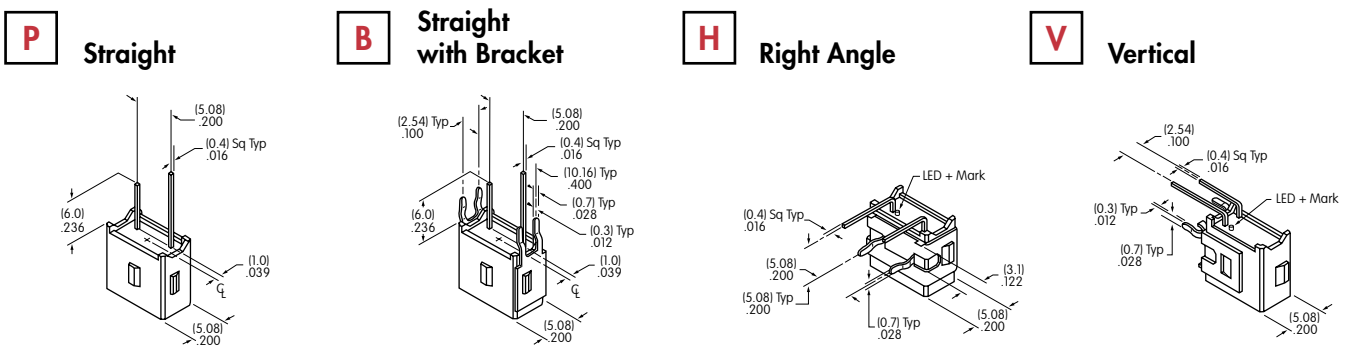
A01VF

DESCRIPTION FOR TYPICAL ORDERING EXAMPLES



A02PC

PC TERMINALS



LED COLORS & SPECIFICATIONS

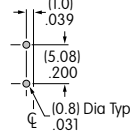
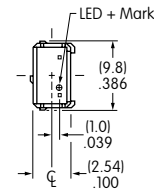
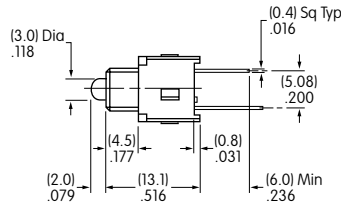
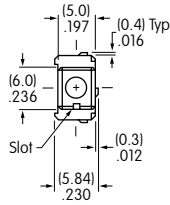
Models	A01 Indicator			A02 Indicator			
	C	E	F	C	E	F	
LED is colored in OFF state	Color	Red	Yellow	Green	Red	Yellow	Green
Forward Peak Current	I_{FM}	50mA	50mA	50mA	25mA	30mA	30mA
Continuous Forward Current	I_F	30mA	30mA	30mA	20mA	20mA	20mA
Forward Voltage	V_F	1.7V	2.2V	2.1V	2.1V	2.1V	2.2V
Reverse Peak Voltage	V_{RM}	4V	4V	4V	4V	4V	4V
Current Reduction Rate Above 25°C	ΔI_F	0.67mA/°C	0.67mA/°C	0.67mA/°C	0.33mA/°C	0.40mA/°C	0.40mA/°C
Ambient Temperature Range		-30°C ~ +85°C			-30°C ~ +85°C		

Electrical specifications are determined at a basic temperature of 25°C.
 If the source voltage is greater than the LED's rated voltage, a ballast resistor must be connected in series with the LED.
 The ballast resistor value can be calculated by using the formula shown in the Supplement section.

Toggles
 Rockers
 Pushbuttons
 Illuminated PB
 Programmable
 Keylocks
 Rotaries
 Slides
 Tactiles
 Tilt
 Touch
 Indicators
 Accessories
 Supplement

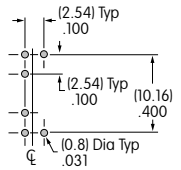
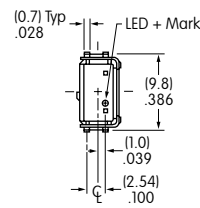
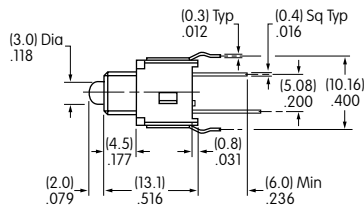
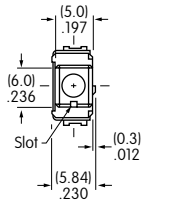
TYPICAL INDICATOR DIMENSIONS

Straight PC



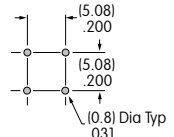
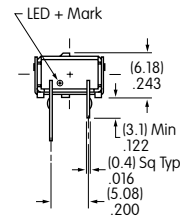
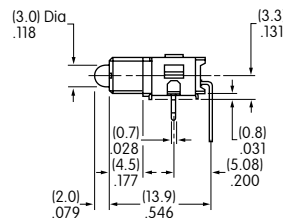
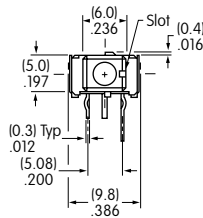
A01PF

Straight PC • Bracket



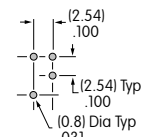
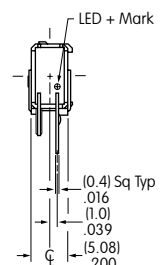
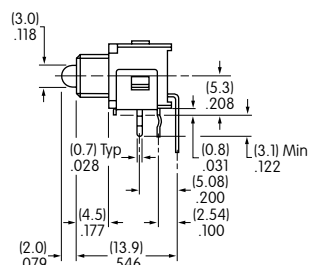
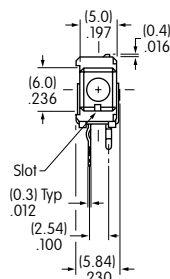
A01BF

Right Angle PC



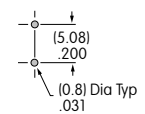
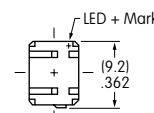
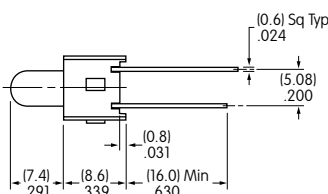
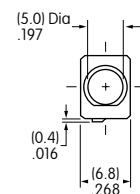
A01HF

Vertical PC



A01VF

Straight PC



A02PF

Toggles

Rockers

Pushbuttons

Programmable

Illuminated PB

Keylocks

Rotaries

Slides

Tactiles

Tilt

Touch

Indicators

Accessories

Supplement