



Chipsmall Limited consists of a professional team with an average of over 10 year of expertise in the distribution of electronic components. Based in Hongkong, we have already established firm and mutual-benefit business relationships with customers from,Europe,America and south Asia,supplying obsolete and hard-to-find components to meet their specific needs.

With the principle of “Quality Parts,Customers Priority,Honest Operation,and Considerate Service”,our business mainly focus on the distribution of electronic components. Line cards we deal with include Microchip,ALPS,ROHM,Xilinx,Pulse,ON,Everlight and Freescale. Main products comprise IC,Modules,Potentiometer,IC Socket,Relay,Connector.Our parts cover such applications as commercial,industrial, and automotives areas.

We are looking forward to setting up business relationship with you and hope to provide you with the best service and solution. Let us make a better world for our industry!



Contact us

Tel: +86-755-8981 8866 Fax: +86-755-8427 6832

Email & Skype: info@chipsmall.com Web: www.chipsmall.com

Address: A1208, Overseas Decoration Building, #122 Zhenhua RD., Futian, Shenzhen, China



A01 series

Mushroom head pushbutton switches

Distinctive features and specifications

A01M_AX1607US



- Panel Sealed to IP65
- Single pole to four pole changeover
- Custom engraving
- Push on tab terminals
- 6A 250VAC

ELECTRICAL SPECIFICATIONS

- **Current/Voltage Rating** : 10mA 5VAC min, 6A 250VAC, 6Amp 12VDC
- **Initial Contact Resistance** : 10mΩ max at 1A 4VDC
- **Insulation Resistance** : 50MΩ min
- **Dielectric Strength** : 750V between open contacts, 5KV live to accessible
- **Electrical Life** : 50,000 cycles min
- **Contact Gap** : >1mm (0.039)
- **Insulation** : Class 2

MECHANICAL SPECIFICATIONS

- **Mechanical Life (operator)** : Momentary, 1 million cycles, maintained 100,000 cycles
- **Terminals** : Solder/quick connect 2.8mm (0.110)

GENERAL SPECIFICATIONS

- **Operating Temperature** : -20°C to +55°C
- **Solder Heat Resistance** : 350°C for 5 seconds
- **Sealing** : Panel sealed to IP65, rear of panel IP40

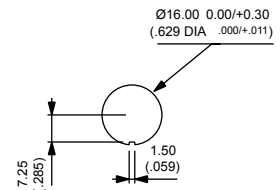
AGENCY APPROVALS



MATERIALS

- **Screens** : PC
- **Reflector assembly** : PC
- **Operator** : PBT
- **Nut** : ABS
- **Camtrack Momentary** : PPE
- **Camtrack maintained** : PPSU
- **Switch block 1 & 2 pole** : PBT
- **Switch block 3 & 4 pole** : PEI
- **Contacts** : Gold plated silver

PANEL CUT OUT



Dimensions : first dimensions are in mm while inches are shown in brackets.
Refer to the following pages for further information.



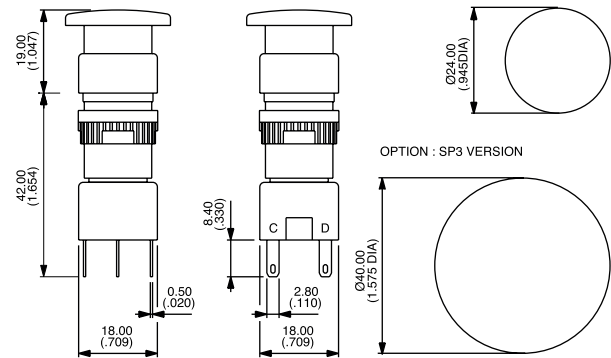
Mounting accessories : standard hardware 1 nut and 1 sealing washer.

A01 series

Mushroom head pushbutton switches

Panel cut-out Ø16 (0.755)

Pushbutton



Overview

Ø Actuator	Operator		Switch block	
	Description	Part No	No of poles	Part No
24mm	Black Momentary	A01MMA	Single pole	A0151B
24mm	Red Momentary	A01MMB	Double pole	A0152B
24mm	Yellow Momentary	A01MMD	Three pole	A0155B
24mm	Green Momentary	A01MME	Four pole	A0153B
24mm	Blue Momentary	A01MMF		
24mm	Black Maintained	A01MXA		
24mm	Red Maintained	A01MXB		
24mm	Yellow Maintained	A01MXD		
24mm	Green Maintained	A01MXE		
24mm	Blue Maintained	A01MXF		
40mm	Black Momentary	A01MMA SP3		
40mm	Red Momentary	A01MMB SP3		
40mm	Yellow Momentary	A01MMD SP3		
40mm	Green Momentary	A01MME SP3		
40mm	Blue Momentary	A01MMF SP3		
40mm	Black Maintained	A01MXA SP3		
40mm	Red Maintained	A01MXB SP3		
40mm	Yellow Maintained	A01MXD SP3		
40mm	Green Maintained	A01MXE SP3		
40mm	Blue Maintained	A01MXF SP3		

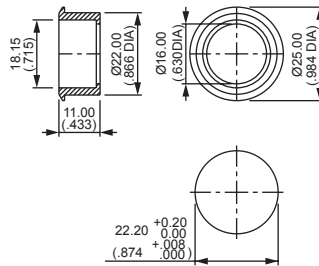
A01 series

Mushroom head pushbutton switches

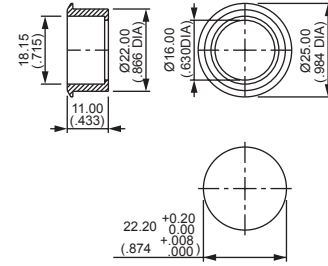
Accessories

Flush mount bezels

Anodised aluminium/matt black



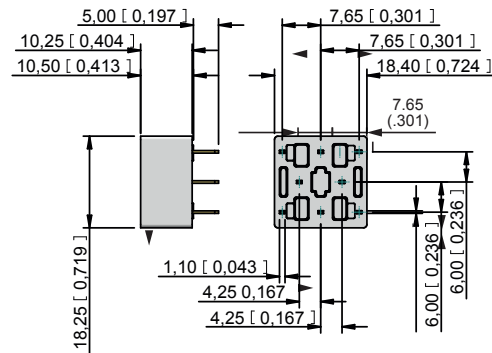
Round natural anodised : A01FMM



Round matt black : A01FMMG

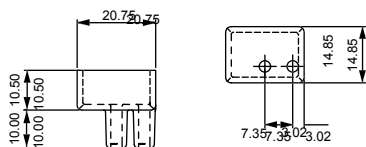
PCB Sockets

Number of Poles	Part No.
Single pole, non illuminated :	A01PC1
Double pole, non illuminated :	A01PC2
Single pole, illuminated :	A01PC3
Double pole, illuminated :	A01PC4
Indicator :	A01PC5



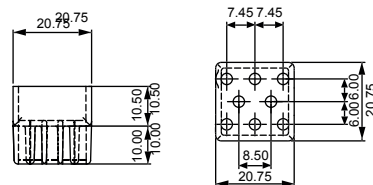
Terminal guards

Two way



Part number A01RTC2

Eight way



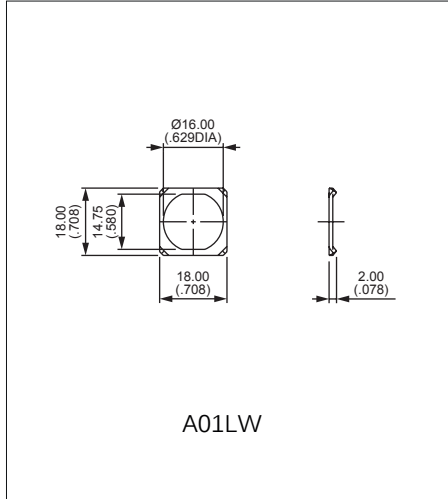
Part number A01RTC8

A01 series

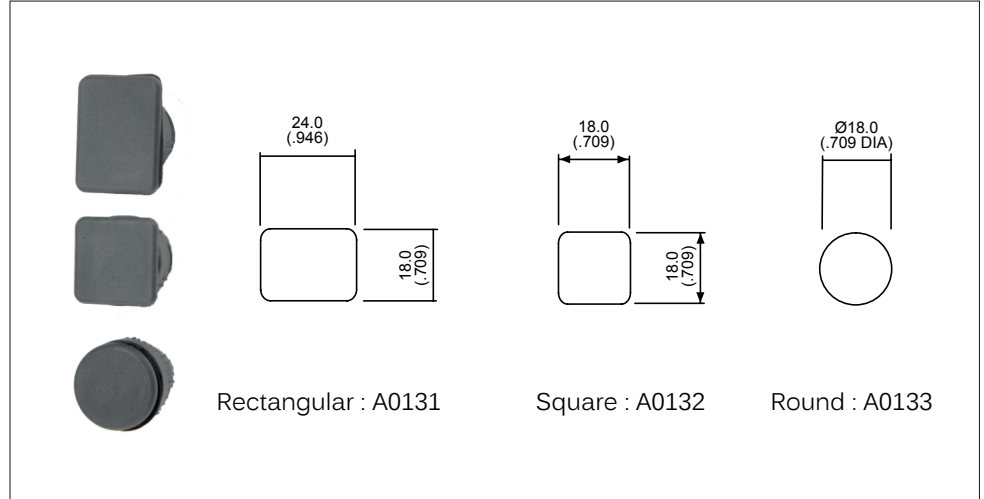
Mushroom head pushbutton switches

Accessories & tools

Anti rotation ring



Blanking plugs



Tools

