



Chipsmall Limited consists of a professional team with an average of over 10 year of expertise in the distribution of electronic components. Based in Hongkong, we have already established firm and mutual-benefit business relationships with customers from,Europe,America and south Asia,supplying obsolete and hard-to-find components to meet their specific needs.

With the principle of “Quality Parts,Customers Priority,Honest Operation,and Considerate Service”,our business mainly focus on the distribution of electronic components. Line cards we deal with include Microchip,ALPS,ROHM,Xilinx,Pulse,ON,Everlight and Freescale. Main products comprise IC,Modules,Potentiometer,IC Socket,Relay,Connector.Our parts cover such applications as commercial,industrial, and automotives areas.

We are looking forward to setting up business relationship with you and hope to provide you with the best service and solution. Let us make a better world for our industry!



Contact us

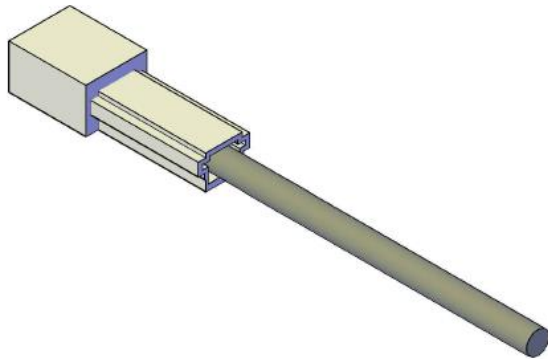
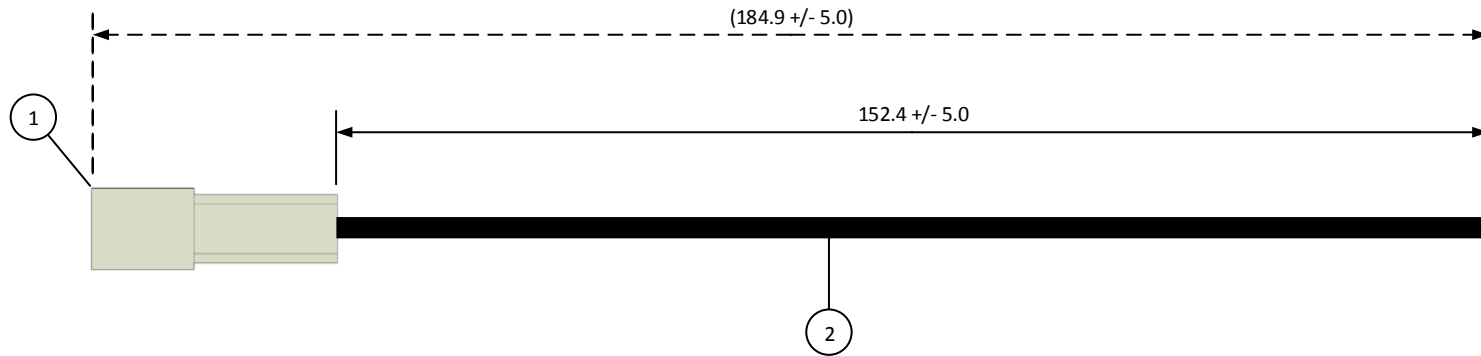
Tel: +86-755-8981 8866 Fax: +86-755-8427 6832

Email & Skype: info@chipsmall.com Web: www.chipsmall.com

Address: A1208, Overseas Decoration Building, #122 Zhenhua RD., Futian, Shenzhen, China



4			3		2		1	
ITEM	CONNECTOR PART NO.	DESCRIPTION	IPI CHECK		EOR CHECK		Applicable Tooling	
1	RSFR-1VF	RSF CONNECTOR WHITE HOUSING, W-W					APPLICATOR	
2	SIM-51T-250N	TAB-IN TERMINAL – BRASS, TIN-PLATED						
3	UL1015, 16 AWG	BLACK						



JST

SCALE	CUSTOMER NAME		CUSTOMER PART NO.	
1: 1				
DIMENSIONS	DESCRIPTION			
All dimensions are in MM with a tolerance of +/- 3.0 unless otherwise specified.	6" INSIDE LENGTH – 1 POSITION, LIF, POS LOCK, .250, W-W INSULATED RECPT W/BLUNT LEADS, WHITE HSG		MATES W/W-W PLUG 01RSFP16K152S	
DRAWN BY	ASSEMBLY PART NO.			
STEVEN PILKINGTON	A01RSFR16K152S			
CHECKED BY	DRAWING NO. & REVISION		REVISED	
JUSTIN BAKER	GAM-116		3/11/2016	

REV.	DESCRIPTION	DATE	BY
------	-------------	------	----

4

3

2

1