



Chipsmall Limited consists of a professional team with an average of over 10 year of expertise in the distribution of electronic components. Based in Hongkong, we have already established firm and mutual-benefit business relationships with customers from,Europe,America and south Asia,supplying obsolete and hard-to-find components to meet their specific needs.

With the principle of “Quality Parts,Customers Priority,Honest Operation,and Considerate Service”,our business mainly focus on the distribution of electronic components. Line cards we deal with include Microchip,ALPS,ROHM,Xilinx,Pulse,ON,Everlight and Freescale. Main products comprise IC,Modules,Potentiometer,IC Socket,Relay,Connector.Our parts cover such applications as commercial,industrial, and automotives areas.

We are looking forward to setting up business relationship with you and hope to provide you with the best service and solution. Let us make a better world for our industry!



Contact us

Tel: +86-755-8981 8866 Fax: +86-755-8427 6832

Email & Skype: info@chipsmall.com Web: www.chipsmall.com

Address: A1208, Overseas Decoration Building, #122 Zhenhua RD., Futian, Shenzhen, China



A02ES-H series

High-security emergency stop switches •
panel cut-out Ø 22 mm



DISTINCTIVE FEATURES

Built-in safety

Approved to EN 60947-5-5, UL 508 and CSA C22.2 No 14-10

Pull or twist to release

AC-12, 3 A 250 VAC / DC-12, 2 A 30 VDC

Panel sealed to IP65

The A02ES-H series has been designed to ensure the highest security level. By design, this product has a failsafe modular construction. Many other emergency stop switches are not failsafe and rely on butt action contacts: the NC contacts remain closed until the actuator is pressed. Therefore, if the switch is damaged, destroyed or assembled incorrectly, the contacts remain closed.

On the A02ES-H, if the operator or switch block become separated, the circuit will open.



ELECTRICAL SPECIFICATIONS

- Electrical function : push to shut off, pull or twist to release
- Current/voltage rating - NC contacts :
AC-12, 3 A 250 VAC
AC-15, 1.5 A 250 VAC
DC-12, 2 A 30 VDC
DC-13, 1 A 30 VDC
- Current/voltage rating - NO contacts :
AC12, 0.6 A 250 VAC
AC14, 0.3 A 250 VAC
DC12, 2 A 30 V / 1 A 30 VDC
- Electrical life : 100,000 cycles
- Insulation resistance : 100 MΩ min.
- Dielectric strength : contact block 2,500 Vrms
- Contacts : gold plated silver



ENVIRONMENTAL SPECIFICATIONS

- Front panel sealing : IP65
- Terminals IP20 (finger safe)
- Operating temperature : -25 °C to +60 °C (-13 °F to +140 °F)
- Storage temperature : -45 °C to +80 °C (-49 °F to +176 °F)

The company reserves the right to change specifications without notice. Not for sale in Japan.



A02ES-H series

High-security emergency stop switches • panel cut-out Ø 22 mm



GENERAL SPECIFICATIONS

- Panel thickness : 6 mm (.236) max.
- Low level or mechanical life : 250,000 cycles
- Recommended torque : 2 Nm
- Switch terminals : M3 screws



OPERATING FORCE

- Push to shut off : 32 N
- Pull to release : 21 N
- Turn to release : 0.27 Nm
- Minimum force to direct opening action : 80 N

AGENCY APPROVALS



UL 508
CSA 22.2 No 14-10



EN 60947-5-5

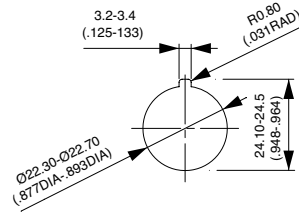


ABOUT THIS SERIES

- **Mounting accessories :**
standard hardware supplied : 1 nut and 1 flat panel seal



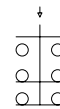
PANEL CUT-OUT



ELECTRICAL FUNCTIONS



Double pole
Normally closed



Double pole NC
+ single pole NO

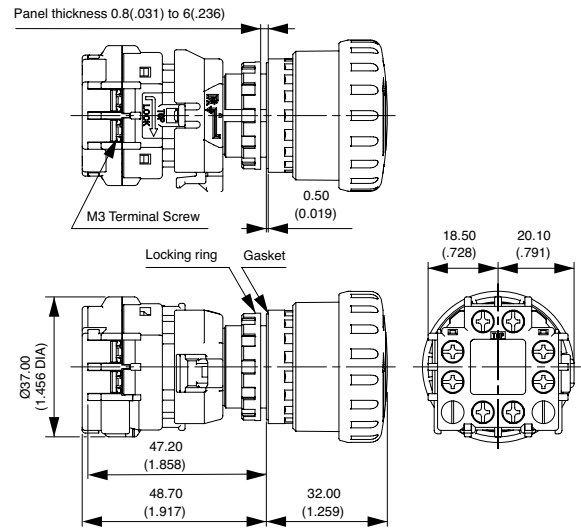
A02ES-H series

High-security emergency stop switches • panel cut-out Ø 22 mm

DOUBLE POLE, NORMALLY CLOSED



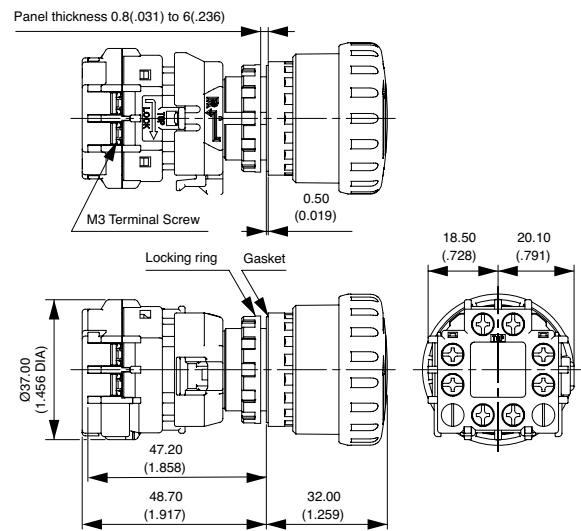
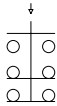
A02ESH3B102IX0



DOUBLE POLE, NORMALLY CLOSED + SINGLE POLE, NORMALLY OPEN



A02ESH3B112IX0

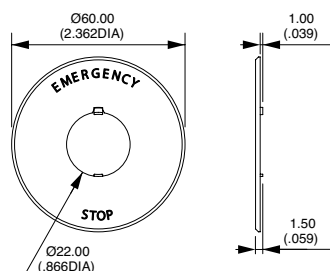


ACCESSORIES

Order separately.

Ø 60 MM NAME PLATE

A02-U27Y



Legend "EMERGENCY STOP" is indicated outside a Ø 44 mm circle.

A02ES-H series

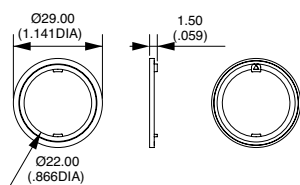
High-security emergency stop switches •
panel cut-out Ø 22 mm

ACCESSORIES (CONTINUED)

Order separately.

ANTI-ROTATION RING

A02-U9ZRL



LOCKING RING WRENCH

A02-U9ZT1

