



Chipsmall Limited consists of a professional team with an average of over 10 year of expertise in the distribution of electronic components. Based in Hongkong, we have already established firm and mutual-benefit business relationships with customers from,Europe,America and south Asia,supplying obsolete and hard-to-find components to meet their specific needs.

With the principle of “Quality Parts,Customers Priority,Honest Operation,and Considerate Service”,our business mainly focus on the distribution of electronic components. Line cards we deal with include Microchip,ALPS,ROHM,Xilinx,Pulse,ON,Everlight and Freescale. Main products comprise IC,Modules,Potentiometer,IC Socket,Relay,Connector.Our parts cover such applications as commercial,industrial, and automotives areas.

We are looking forward to setting up business relationship with you and hope to provide you with the best service and solution. Let us make a better world for our industry!



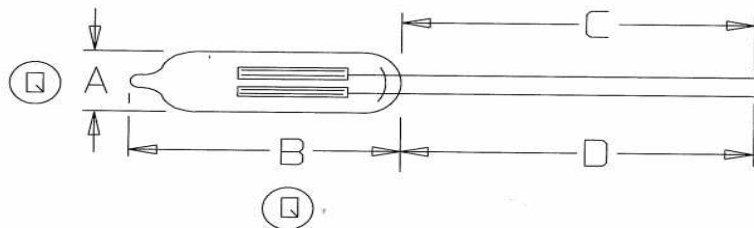
## Contact us

Tel: +86-755-8981 8866 Fax: +86-755-8427 6832

Email & Skype: info@chipsmall.com Web: www.chipsmall.com

Address: A1208, Overseas Decoration Building, #122 Zhenhua RD., Futian, Shenzhen, China





REV	ECR NO./DESCRIPTION	DATE
J	20412 RHW ADDED PART NUMBER A1C-T (-43).	05/07/01
K	22587 RHW ADDED PART NUMBER C2A5G (-44).	06/03/03
L	24608 BH ADDED SPEC. REQ. B TO [-34] & [-35]	05/09/05
M	24976 RHW REMOVED SPECIAL REQUIREMENTS "R" AND "U" AND DELETED FROM CORRESPONDING PART NUMBERS.	09/06/05
N	30052 RHW ADDED PART NUMBER TGF-03.	01/13/06
P	30115 RHW DASH NO'S. 30 & 32; PART NO'S. 2M & 1M; "C" & "D" DIM'S. 1.00 MIN. WAS .90 NOM.	03/02/06
R	30255 RHW ADDED P/N C3A-T & SPEC. REQMT. AB.	06/28/06
S	30313 RHW ADDED SPECIAL REQUIREMENTS "G", "Z" & "AA" TO P/N'S G2B-1 & G2B-2. ADDED SPECIAL REQUIREMENT "G" TO P/N TGF-03.	07/06/06


**NOTES:**

- UNLESS OTHERWISE SPECIFIED, LAMPS ARE TO BE PACKAGED 500 PIECES PER BAG OR BOX AND ARE TO BE LABELED WITH QUANTITY, PART NO., AND DATE CODE.
- SERIES RESISTOR VALUES ARE SUGGESTED VALUES ONLY.

\* SEE SHEET TWO FOR SPECIAL REQUIREMENTS

JUL 20 2006

**ORIGINAL**  
WHEN RED

THIS DWG IS THE PROPERTY OF CML INNOVATIVE TECH, INC. AND IS PROPRIETARY IN GENERAL AND IN DETAIL. IT SHALL NOT BE COPIED OR ITS CONTENTS REVEALED TO OUTSIDE PARTIES WITHOUT THE WRITTEN CONSENT OF CML INNOVATIVE TECH, INC.	<input checked="" type="checkbox"/> FOR INSPECTION USE ONLY <input checked="" type="checkbox"/> SPC DOCUMENTATION REQ. (X R CHARTS)	<b>DO NOT SCALE</b> PART NO. _____ MODEL NO. _____ MATERIAL: _____	DRAWN J. BURBANO CHECKED BE 7/17/06 ENG. APPRV Hank SCALE: NONE	TITLE T-2 NEON WIRE TERMINAL	
	TOLERANCE UNLESS OTHERWISE SPECIFIED FRACTION ± 1/64 INCHES .xxx ± .010 (0.25) ANGLE ± 1 deg.	SEE SHEETS 3,4,&5	SHEET 1 OF 5 DIST V/S	REV S A14042	 <b>CML INNOVATIVE TECHNOLOGIES, INC.</b> WHERE INNOVATION COMES TO LIGHT 147 CENTRAL AVE. HACKENSACK, NJ 07601

DASH NO.	PART NUMBER	ELECTRICAL CHARACTERISTICS						DIMENSIONS				SPECIAL REQUIREMENTS
		CIRCUIT VOLTAGE	CURRENT NOM. (mA)	LIFE HOURS AVERAGE	BREAKDOWN VOLTAGE ①		SERIES RES. (Ω)	"A" MAX.	"B" MAX.	"C"	"D"	
-01	A1B	105-125	0.3	25000	65	90	220K	.244	.500	1.06±.06	1.06±.06	
-02	A1C	105-125	1.2	25000	95	135	47K	.244	.500	1.06±.06	1.06±.06	
-03	A1A	105-125	0.5	25000	65	95	150K	.244	1.00	1.00±.06	1.00±.06	
-04	A2A	105-125	0.6	25000	65	95	100K	.244	.84	2.06±.06	2.06±.06	
-05	A2B	105-125	0.6	25000	65	95	100K	.244	.75	2.06±.06	2.06±.06	

**ORIGINAL**  
WHEN RED