



Chipsmall Limited consists of a professional team with an average of over 10 year of expertise in the distribution of electronic components. Based in Hongkong, we have already established firm and mutual-benefit business relationships with customers from,Europe,America and south Asia,supplying obsolete and hard-to-find components to meet their specific needs.

With the principle of "Quality Parts,Customers Priority,Honest Operation,and Considerate Service",our business mainly focus on the distribution of electronic components. Line cards we deal with include Microchip,ALPS,ROHM,Xilinx,Pulse,ON,Everlight and Freescale. Main products comprise IC,Modules,Potentiometer,IC Socket,Relay,Connector.Our parts cover such applications as commercial,industrial, and automotives areas.

We are looking forward to setting up business relationship with you and hope to provide you with the best service and solution. Let us make a better world for our industry!



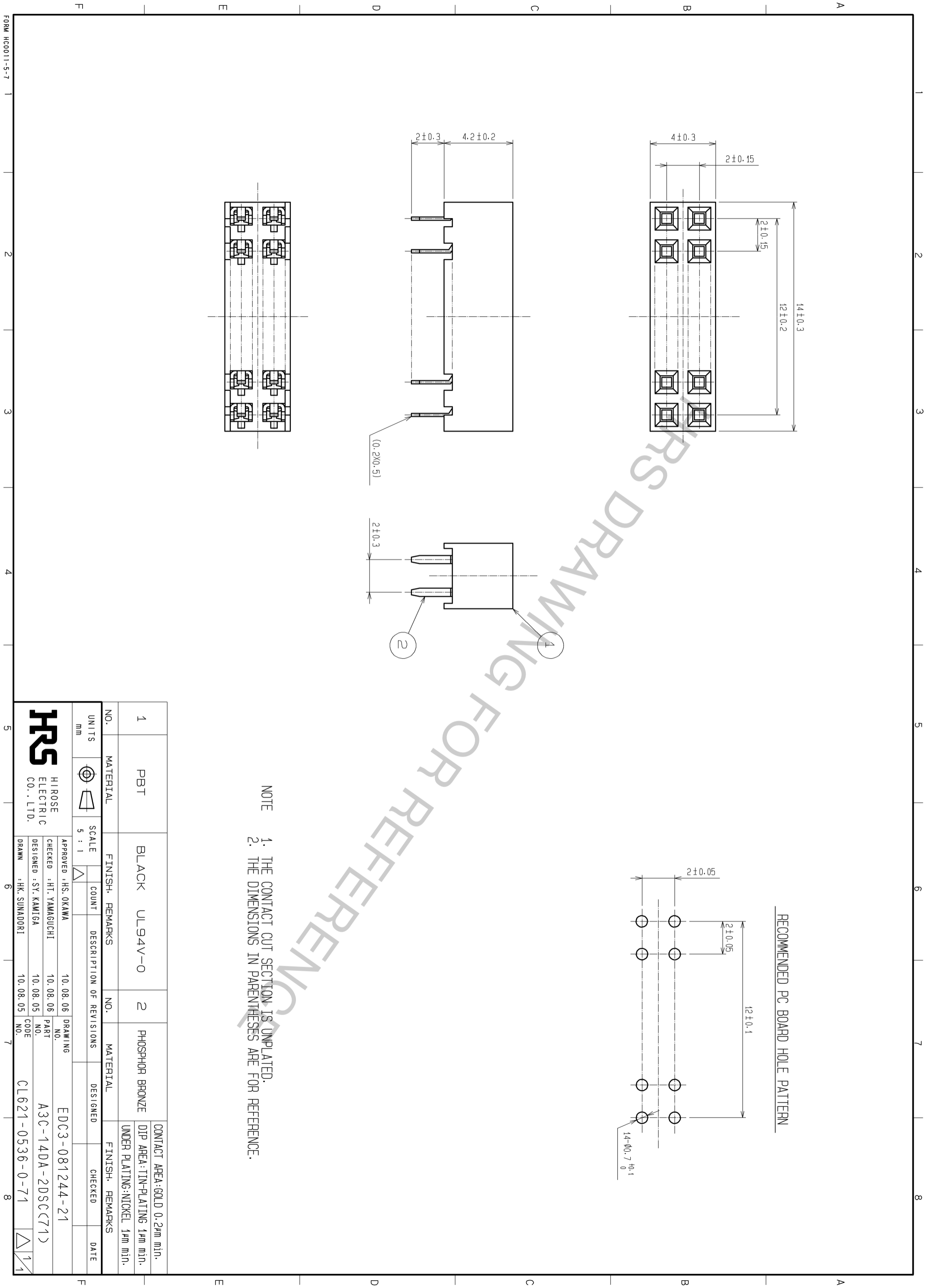
## Contact us

Tel: +86-755-8981 8866 Fax: +86-755-8427 6832

Email & Skype: info@chipsmall.com Web: www.chipsmall.com

Address: A1208, Overseas Decoration Building, #122 Zhenhua RD., Futian, Shenzhen, China





NOTE  
 1. THE CONTACT CUT SECTION IS UNPLATED.  
 2. THE DIMENSIONS IN PARENTHESSES ARE FOR REFERENCE.

NO. 1	MATERIAL PBT	FINISH: BLACK	REMARKS: UL94V-0	NO. 2	MATERIAL PHOSPHOR BRONZE	FINISH: UNDER PLATING-NICKEL 1μm min.	REMARKS: CONTACT AREA: GOLD 0.2μm min. DIP AREA: TIN-PLATING 1μm min.
UNITS mm		SCALE 5 : 1	COUNT	DESCRIPTION OF REVISIONS		CHECKED	DATE
APPROVED: HS. OKAWA		DRAWING NO. EDC3-081244-21		DESIGNED		CHECKED	
CHECKED: HT. YAMAGUCHI		PART NO. A3C-14DA-2DSC(71)		DESIGNED: SY. KAMIGA		CHECKED	
DRAWN: HK. SUNADORI		CODE NO. CL621-0536-0-71		DESIGNED: 10.08.05		CHECKED	
DRAWN: 10.08.05		CODE NO. CL621-0536-0-71		DESIGNED: 10.08.05		CHECKED	



FORM HC0011-5-7