



Chipsmall Limited consists of a professional team with an average of over 10 year of expertise in the distribution of electronic components. Based in Hongkong, we have already established firm and mutual-benefit business relationships with customers from,Europe,America and south Asia,supplying obsolete and hard-to-find components to meet their specific needs.

With the principle of "Quality Parts,Customers Priority,Honest Operation,and Considerate Service",our business mainly focus on the distribution of electronic components. Line cards we deal with include Microchip,ALPS,ROHM,Xilinx,Pulse,ON,Everlight and Freescale. Main products comprise IC,Modules,Potentiometer,IC Socket,Relay,Connector.Our parts cover such applications as commercial,industrial, and automotives areas.

We are looking forward to setting up business relationship with you and hope to provide you with the best service and solution. Let us make a better world for our industry!



Contact us

Tel: +86-755-8981 8866 Fax: +86-755-8427 6832

Email & Skype: info@chipsmall.com Web: www.chipsmall.com

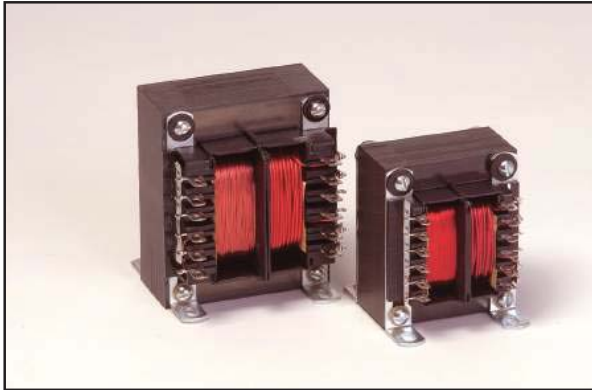
Address: A1208, Overseas Decoration Building, #122 Zhenhua RD., Futian, Shenzhen, China



All-4-One™ International Transformers Chassis Mount



International Standards at Lower Cost and Better Performance



Designed to provide the high isolation, creepage and clearance necessary to comply with international safety standards.

General Specifications

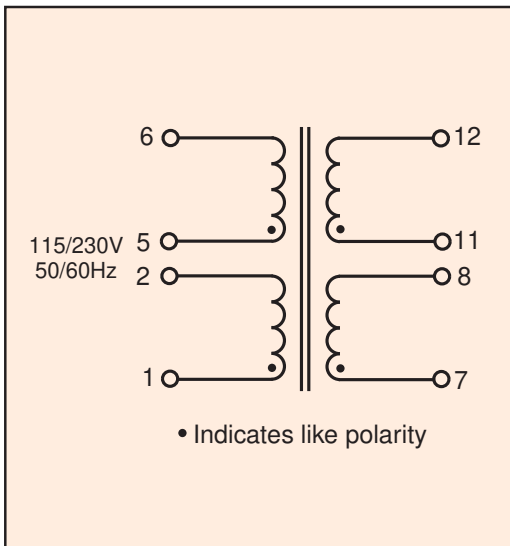
- Power - 25 VA to 175 VA
- Dielectric Strength - 4000 Vrms Hipot
- Primaries - Dual primaries (115/230 V - 50/60 Hz)
- Dual Secondaries - Series or parallel
- Terminals - Solder lug / quick connect type terminals
- Leakage - Current meets UL 60601-1, IEC/EN 60601-1
- Insulation - Class F (155° C)
- Flammability Rating - Bobbin and shroud material meet UL 94-V0

Agency Certifications

- UL 1446 E66312
- UL recognized to UL 506 / UL 5085-2, File # E63829
- CSA certified to C22.2 No 66.1, File # 221070
- VDE certified to VDE 0805 / EN 60950, File # 1448



Part Number	VA	Secondary RMS Rating	
	Size	Series	Parallel
A41-25-10	25	10.0 VCT @ 2.5A	5.0V @ 5.0A
A41-43-10	43	10.0 VCT @ 4.3A	5.0V @ 8.6A
A41-80-10	80	10.0 VCT @ 8.0A	5.0V @ 16.0A
A41-130-10	130	10.0 VCT @ 13.0A	5.0V @ 26.0A
A41-175-10	175	10.0 VCT @ 17.5A	5.0V @ 35.0A
A41-25-12	25	12.6 VCT @ 2.0A	6.3V @ 4.0A
A41-43-12	43	12.6 VCT @ 3.4A	6.3V @ 6.8A
A41-80-12	80	12.6 VCT @ 6.3A	6.3V @ 12.6A
A41-130-12	130	12.6 VCT @ 10.3A	6.3V @ 20.6A
A41-175-12	175	12.6 VCT @ 14.0A	6.3V @ 28.0A
A41-25-16	25	16.0 VCT @ 1.6A	8.0V @ 3.2A
A41-43-16	43	16.0 VCT @ 2.7A	8.0V @ 5.4A
A41-80-16	80	16.0 VCT @ 5.0A	8.0V @ 10.0A
A41-130-16	130	16.0 VCT @ 8.1A	8.0V @ 16.2A
A41-175-16	175	16.0 VCT @ 11.0A	8.0V @ 22.0A
A41-25-20	25	20.0 VCT @ 1.25A	10 V @ 2.5A
A41-43-20	43	20.0 VCT @ 2.2A	10 V @ 4.4A
A41-80-20	80	20.0 VCT @ 4.0A	10 V @ 8.0A
A41-130-20	130	20.0 VCT @ 6.5A	10 V @ 13.0A
A41-175-20	175	20.0 VCT @ 8.8A	10 V @ 17.6A
A41-25-24	25	24.0 VCT @ 1.0A	12 V @ 2.0A
A41-43-24	43	24.0 VCT @ 1.8A	12 V @ 3.6A
A41-80-24	80	24.0 VCT @ 3.3A	12 V @ 6.6A
A41-130-24	130	24.0 VCT @ 5.4A	12 V @ 10.8A
A41-175-24	175	24.0 VCT @ 7.3A	12 V @ 14.6A
A41-25-28	25	28.0 VCT @ 0.9A	14 V @ 1.86A
A41-43-28	43	28.0 VCT @ 1.5A	14 V @ 3.0A
A41-80-28	80	28.0 VCT @ 2.8A	14 V @ 5.6A
A41-130-28	130	28.0 VCT @ 4.6A	14 V @ 9.2A
A41-175-28	175	28.0 VCT @ 6.25A	14 V @ 12.5A
A41-25-36	25	36.0 VCT @ 0.7A	18 V @ 1.4A
A41-43-36	43	36.0 VCT @ 1.2A	18 V @ 2.4A
A41-80-36	80	36.0 VCT @ 2.2A	18 V @ 4.4A
A41-130-36	130	36.0 VCT @ 3.6A	18 V @ 7.2A
A41-175-36	175	36.0 VCT @ 4.8A	18 V @ 9.6A
A41-25-230	25	230 VCT @ 0.11A	115V @ 0.22A
A41-43-230	43	230 VCT @ 0.19A	115V @ 0.38A
A41-80-230	80	230 VCT @ 0.35A	115V @ 0.7A
A41-130-230	130	230 VCT @ 0.57A	115V @ 1.14A
A41-175-230	175	230 VCT @ 0.76A	115V @ 1.52A



Note: VDE certified A41 Series transformers with standard length and color lead wires are readily available. See website for our A41-L product series.

Custom versions available upon request.

©2015 Signal Transformer Inc. Specifications subject to change without notice. 07.15



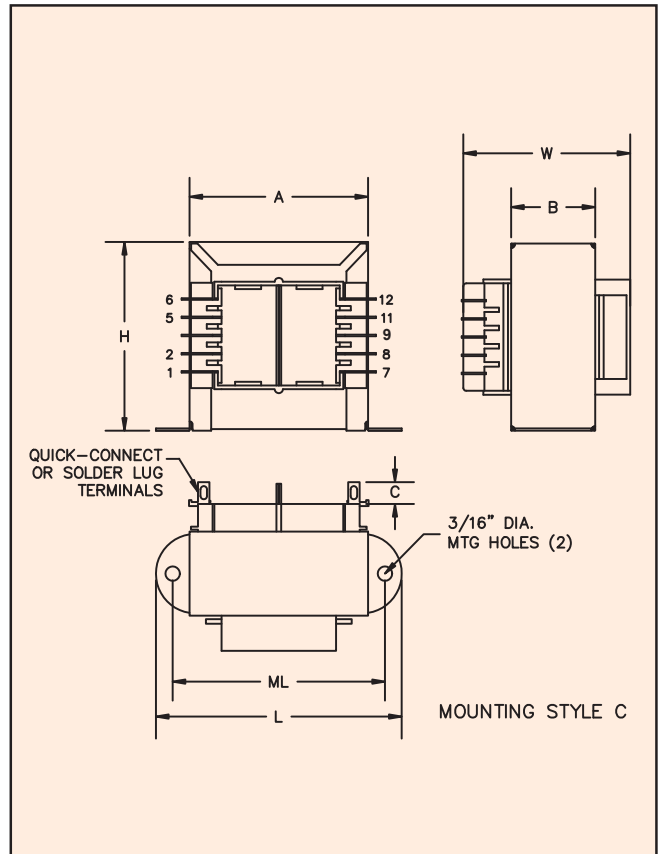
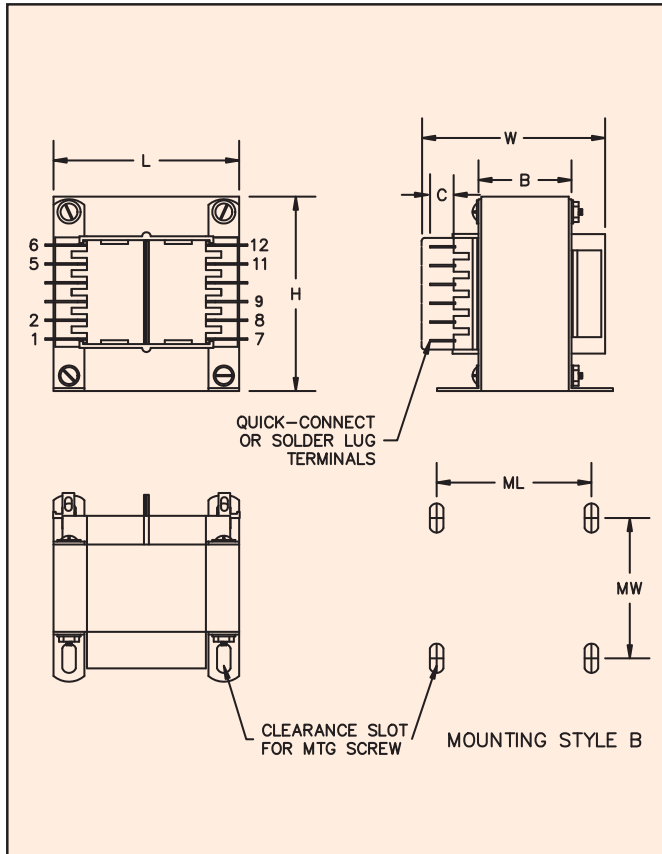
www.signaltransformer.com

500 Bayview Avenue, Inwood, NY 11096
Toll Free 866-239-5777 • Tel 516-239-5777 • Fax 516-239-7208
sales@signaltransformer.com • techhelp@signaltransformer.com

All-4-One™ International Transformers

Chassis Mount

International Standards at Lower Cost and Better Performance



VA	Dimensions						Terminals	Mounting Style	Mounting Dimensions		Mounting Screw	Weight
	L	W	H	A	B	C			ML	MW		
Size	Inches (mm)						Inches (mm)					
25	2.81 (71.4)	2.14 (54.4)	2.31 (58.7)	2.00 (50.8)	1.12 (28.6)	.31 (7.9)	.187 (4.75)	C	2.37 (60.3)	-	#6	1.25 lbs (0.57)
43	3.12 (79.4)	2.14 (54.4)	2.68 (68.2)	2.25 (57.2)	1.12 (28.6)	.31 (7.9)	.187 (4.75)	C	2.81 (71.4)	-	#6	1.6 lbs (0.73)
80	2.50 (63.5)	2.52 (64.3)	3.06 (77.7)	-	1.37 (35.0)	.31 (7.9)	.187 (4.75)	B	2.00 (50.8)	2.18 (55.5)	#6	2.8 lbs (1.27)
130	2.81 (71.4)	3.00 (76.2)	3.37 (85.7)	-	1.62 (41.3)	.37 (9.5)	0.25 (6.35)	B	2.25 (57.2)	2.50 (63.5)	#8	4.1 lbs (1.86)
175	3.12 (79.4)	3.14 (79.7)	3.75 (95.3)	-	1.62 (41.3)	.37 (9.5)	0.25 (6.35)	B	2.50 (63.5)	2.50 (63.5)	#8	5.5 lbs (2.49)

Custom versions available upon request.

©2015 Signal Transformer Inc. Specifications subject to change without notice. 07.15



www.signaltransformer.com

500 Bayview Avenue, Inwood, NY 11096
 Toll Free 866-239-5777 • Tel 516-239-5777 • Fax 516-239-7208
 sales@signaltransformer.com • techhelp@signaltransformer.com