



Chipsmall Limited consists of a professional team with an average of over 10 year of expertise in the distribution of electronic components. Based in Hongkong, we have already established firm and mutual-benefit business relationships with customers from,Europe,America and south Asia,supplying obsolete and hard-to-find components to meet their specific needs.

With the principle of “Quality Parts,Customers Priority,Honest Operation,and Considerate Service”,our business mainly focus on the distribution of electronic components. Line cards we deal with include Microchip,ALPS,ROHM,Xilinx,Pulse,ON,Everlight and Freescale. Main products comprise IC,Modules,Potentiometer,IC Socket,Relay,Connector.Our parts cover such applications as commercial,industrial, and automotives areas.

We are looking forward to setting up business relationship with you and hope to provide you with the best service and solution. Let us make a better world for our industry!



## Contact us

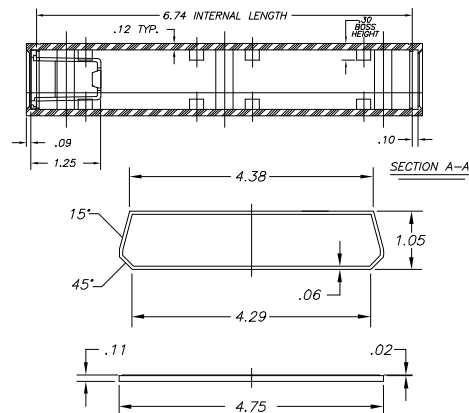
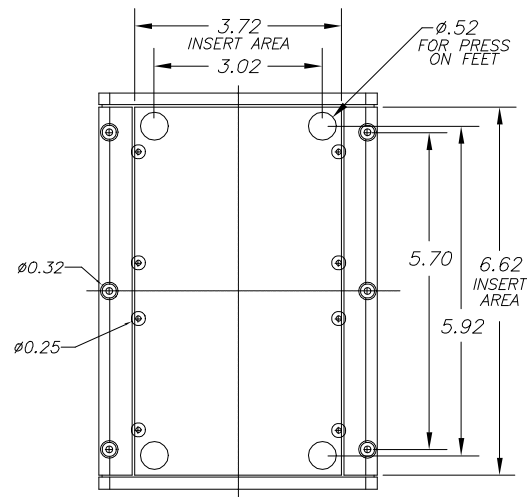
Tel: +86-755-8981 8866 Fax: +86-755-8427 6832

Email & Skype: [info@chipsmall.com](mailto:info@chipsmall.com) Web: [www.chipsmall.com](http://www.chipsmall.com)

Address: A1208, Overseas Decoration Building, #122 Zhenhua RD., Futian, Shenzhen, China

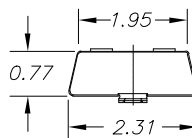


**NOTES:**  
1. WHEN MACHINE OR I PLATES MODIFICATIONS ARE REQUIRED,  
USE THE CENTER OF THE BOX TO DIMENSION.



ALL DIMENSIONS  $\pm .010$

PART NO.	DESCRIPTION	PART NO.	ACCESSORIES
2018	PLASTIC TOP	51	PRESS ON FEET
2020	PLASTIC END PANEL	2020IR	INFARED PANELS
2021	9 VOLT BATTERY ACCESS PANEL	2020CLR	CLEAR & TRANSPARENT RED PANELS
2019	PLASTIC BOTTOM	2020DB9	9 PIN CONNECTOR
2007	PLASTIC BATTERY COVER	2020DB25	25 PIN CONNECTOR
6006	SCREW		



619 Commercial Ave. Covina, CA 91723

(626) 331-0517 Fax (626) 331-8584 <http://www.serpac.com>.