



Chipsmall Limited consists of a professional team with an average of over 10 year of expertise in the distribution of electronic components. Based in Hongkong, we have already established firm and mutual-benefit business relationships with customers from,Europe,America and south Asia,supplying obsolete and hard-to-find components to meet their specific needs.

With the principle of "Quality Parts,Customers Priority,Honest Operation,and Considerate Service",our business mainly focus on the distribution of electronic components. Line cards we deal with include Microchip,ALPS,ROHM,Xilinx,Pulse,ON,Everlight and Freescale. Main products comprise IC,Modules,Potentiometer,IC Socket,Relay,Connector.Our parts cover such applications as commercial,industrial, and automotives areas.

We are looking forward to setting up business relationship with you and hope to provide you with the best service and solution. Let us make a better world for our industry!



Contact us

Tel: +86-755-8981 8866 Fax: +86-755-8427 6832

Email & Skype: info@chipsmall.com Web: www.chipsmall.com

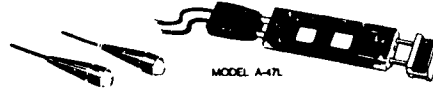
Address: A1208, Overseas Decoration Building, #122 Zhenhua RD., Futian, Shenzhen, China



AMPROBE® ENERGIZER

MODEL A-47L

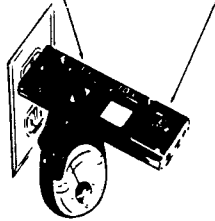
May be used with any Amprobe clamp-on type, current-measuring instrument except Model P/FAA1500(T). May be used with Recorder Models LAW79C(T) for KW measurements.



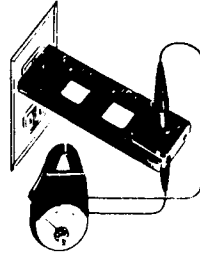
HOOK-UP FOR CURRENT READING

DIRECT READING
Snap instrument jaws over ENERGIZER at 1X position.

10X SENSITIVITY
Snap instrument jaws over ENERGIZER at 10X position.

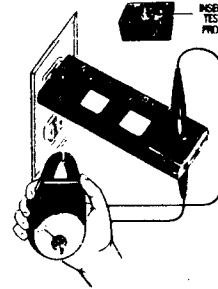


HOOK-UP FOR VOLTAGE READING



TO MEASURE LINE VOLTAGE

Insert voltage test prods of instrument into receptacles marked "LEAD" one on each side of ENERGIZER - and take reading.



SPECIFICATIONS maximum continuous current: 15 amperes
CAUTION From 16 to 20 amperes - 1 minute.

NOTE: DO NOT take voltage reading with instrument jaws snapped around ENERGIZER.

PRECAUTIONS FOR PERSONAL SAFETY

IMPORTANT:

1. Before using any electrical instrument or accessory for actual testing, the unit should be checked on known live line to make certain it is operating properly.
2. In many instances, you will be working with dangerous levels of voltage and/or current; therefore, it is important that you avoid direct contact with any uninsulated, current-carrying surfaces. Appropriate insulating gloves and clothing should be worn.
3. Should the A-47L accidentally be used to try to measure a current beyond its range capability, immediately remove the A-47L from the circuit.

CAUTION: NEVER insert the Energizer with the Red Shorting Bar plugged in it into a receptacle. The Shorting Bar is used ONLY for series connection of the Energizer, see instructions.

AMPROBE INSTRUMENT®
DIVISION OF CORE INDUSTRIES INC., LYNSBROOK, NEW YORK 11563

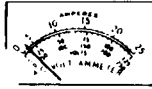
MODEL A-47L GIVES QUICK CURRENT READINGS ON EQUIPMENT HAVING DOUBLE CONDUCTOR ELECTRIC CORD.

1. Plug line cord into ENERGIZER.
2. Plug ENERGIZER into convenience outlet. Snap instrument jaws over ENERGIZER at 1X position for direct reading in amperes. Use 10X position for greater sensitivity of instrument reading.
3. Take current readings as follows:

EXAMPLE -

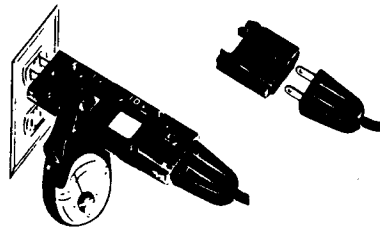
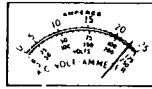
1X position

Reading in amperes without any increase in sensitivity 2.3 amperes.



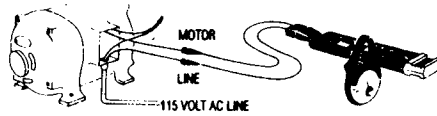
10X position

Same reading with 10X sensitivity. Divide by 10 to get reading of 2.3 amperes. (23 divided by 10)



SIMPLIFIES CURRENT READING ON PERMANENTLY WIRED ELECTRICAL EQUIPMENT BY PERMITTING SERIES CONNECTION OF ENERGIZER

1. Plug RED Shorting Cap into ENERGIZER. Plug ENERGIZER into Female Connector of RAL-4 Leads.



RAL-4 LEADS



RED ★ SHORTING CAP

2. Connect RAL-4 Battery Clips in series with Motor and Line Cord. Snap instrument jaws over ENERGIZER at 10X or other appropriate position (see step 3 above).

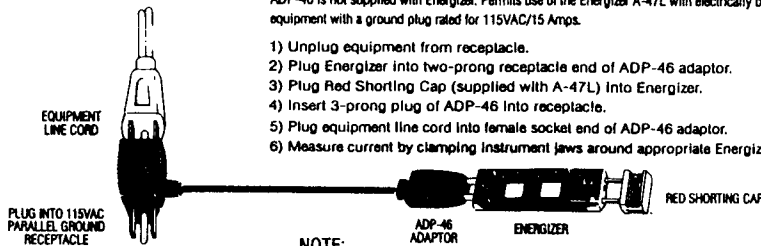
***CAUTION: ENERGIZER and Red shorting Cap assembled, SHOULD NEVER BE INSERTED into a convenience outlet-Circuit fuse will blow!**

MODEL ADP-45 ENERGIZER ADAPTOR CONSISTS OF: Red Shorting Cap and RAL-4 Leads

INSTRUCTIONS FOR USE OF CAT. NO. ADP-46 ENERGIZER GROUND ADAPTOR WITH ENERGIZER MODEL A-47L

ADP-46 is not supplied with Energizer. Permits use of the Energizer A-47L with electrically operated equipment with a ground plug rated for 115VAC/15 Amps.

- 1) Unplug equipment from receptacle.
- 2) Plug Energizer into two-prong receptacle end of ADP-46 adaptor.
- 3) Plug Red Shorting Cap (supplied with A-47L) into Energizer.
- 4) Insert 3-prong plug of ADP-46 into receptacle.
- 5) Plug equipment line cord into female socket end of ADP-46 adaptor.
- 6) Measure current by clamping instrument jaws around appropriate Energizer loop.



NOTE:

Voltage measurements cannot be taken at the Energizer receptacles marked "LEAD" when the ADP-46 is being used