



Chipsmall Limited consists of a professional team with an average of over 10 year of expertise in the distribution of electronic components. Based in Hongkong, we have already established firm and mutual-benefit business relationships with customers from,Europe,America and south Asia,supplying obsolete and hard-to-find components to meet their specific needs.

With the principle of “Quality Parts,Customers Priority,Honest Operation,and Considerate Service”,our business mainly focus on the distribution of electronic components. Line cards we deal with include Microchip,ALPS,ROHM,Xilinx,Pulse,ON,Everlight and Freescale. Main products comprise IC,Modules,Potentiometer,IC Socket,Relay,Connector.Our parts cover such applications as commercial,industrial, and automotives areas.

We are looking forward to setting up business relationship with you and hope to provide you with the best service and solution. Let us make a better world for our industry!



Contact us

Tel: +86-755-8981 8866 Fax: +86-755-8427 6832

Email & Skype: info@chipsmall.com Web: www.chipsmall.com

Address: A1208, Overseas Decoration Building, #122 Zhenhua RD., Futian, Shenzhen, China

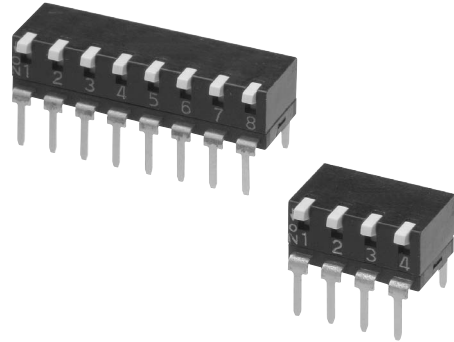


Piano DIP Switch

A6TR

Low-profile Piano DIP Switches with a Standard Pitch of 2.54 mm for Continuous Mounting.

- Low-profile design with a height of only 5 mm and a 2.54-mm pitch for continuous mounting.
- Models available with 2, 4, 6, 8, or 10 poles.
- Gold-plated twin contacts with slide-type self-cleaning mechanism for high reliability.

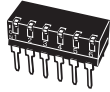
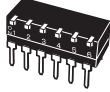


RoHS Compliant

Application

Mode setting of MPU
Modem
Controller of servo motor
Coin changer
Program controller

List of Models

Type (color of actuator)		Short actuator (white)	Long actuator (white)
No. of poles	Quantity per tube		
2	95	A6TR-2101	A6TR-2104
4	47	A6TR-4101	A6TR-4104
6	31	A6TR-6101	A6TR-6104
8	23	A6TR-8101	A6TR-8104
10	18	A6TR-0101	A6TR-0104

Note: Orders must be made in integral multiples of the quantities given for each tube. Switches are not sold individually.

Ratings/Characteristics

Ratings		25 mA at 24 VDC, 10 μ A (minimum current) at 3.5 VDC
Ambient operating temperature		-20 to +70°C at 60% max. (with no icing or condensation)
Ambient operating humidity		35% to 95% (at +5 to +35°C)
Insulation resistance		100 M Ω min. (at 250 VDC)
Contact resistance		200 m Ω max. (initial value)
Dielectric strength	Between terminals	500 VAC for 1 min
Vibration resistance	Malfunction	10 to 55 Hz, 1.5-mm double amplitude
Shock resistance	Malfunction	300 m/s ² min.
Durability	Electrical	1,000 operations min.
Operating force		0.29 to 7.8 N {30 to 795 gf}
Weight		0.25 g (2 poles), 0.50 g (4 poles), 0.76 g (6 poles), 1.02 g (8 poles), 1.28 g (10 poles)

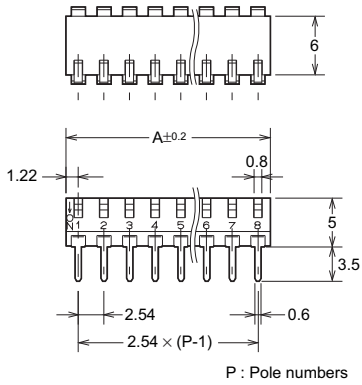
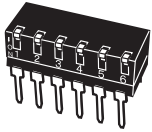
Dimensions (Unit: mm)

● Through hole terminal

Short actuator / Long actuator

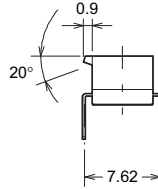
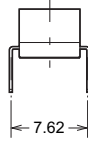
A6TR-□101

A6TR-□104

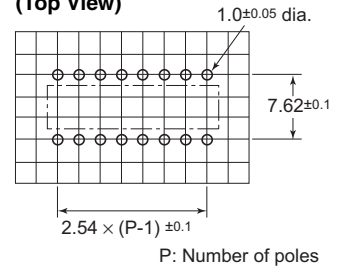


Short actuator

Long actuator



PCB Dimensions (Top View)

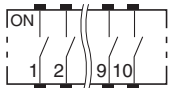


No. of poles	Model		Dimension A
	Short lever	Long lever	
2	A6TR-2101	A6TR-2104	4.98
4	A6TR-4101	A6TR-4104	10.06
6	A6TR-6101	A6TR-6104	15.14
8	A6TR-8101	A6TR-8104	20.22
10	A6TR-0101	A6TR-0104	25.30

Note: Unless otherwise specified, a tolerance of ±0.4 mm applies to all dimensions.

Internal Connections

Contact Form (Top View)



Precautions

Be sure to read the Safety precautions common to all DIP Switches for correct use.

- Application examples provided in this document are for reference only. In actual applications, confirm equipment functions and safety before using the product.
- Consult your OMRON representative before using the product under conditions which are not described in the manual or applying the product to nuclear control systems, railroad systems, aviation systems, vehicles, combustion systems, medical equipment, amusement machines, safety equipment, and other systems or equipment that may have a serious influence on lives and property if used improperly. Make sure that the ratings and performance characteristics of the product provide a margin of safety for the system or equipment, and be sure to provide the system or equipment with double safety mechanisms.

Note: Do not use this document to operate the Unit.

OMRON Corporation

ELECTRONIC AND MECHANICAL COMPONENTS COMPANY

Contact: www.omron.com/ecb

Cat. No. A209-E1-01
0812(0207)(O)