



Chipsmall Limited consists of a professional team with an average of over 10 year of expertise in the distribution of electronic components. Based in Hongkong, we have already established firm and mutual-benefit business relationships with customers from,Europe,America and south Asia,supplying obsolete and hard-to-find components to meet their specific needs.

With the principle of “Quality Parts,Customers Priority,Honest Operation,and Considerate Service”,our business mainly focus on the distribution of electronic components. Line cards we deal with include Microchip,ALPS,ROHM,Xilinx,Pulse,ON,Everlight and Freescale. Main products comprise IC,Modules,Potentiometer,IC Socket,Relay,Connector.Our parts cover such applications as commercial,industrial, and automotives areas.

We are looking forward to setting up business relationship with you and hope to provide you with the best service and solution. Let us make a better world for our industry!



Contact us

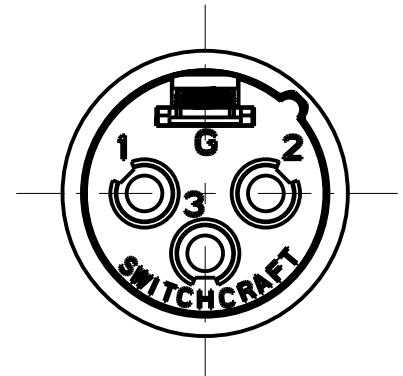
Tel: +86-755-8981 8866 Fax: +86-755-8427 6832

Email & Skype: info@chipsmall.com Web: www.chipsmall.com

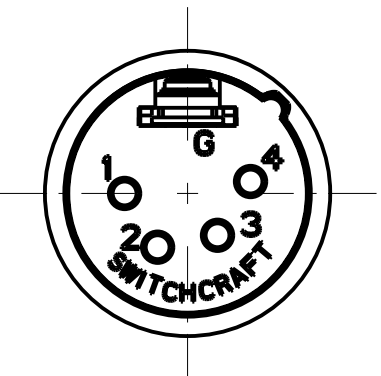
Address: A1208, Overseas Decoration Building, #122 Zhenhua RD., Futian, Shenzhen, China



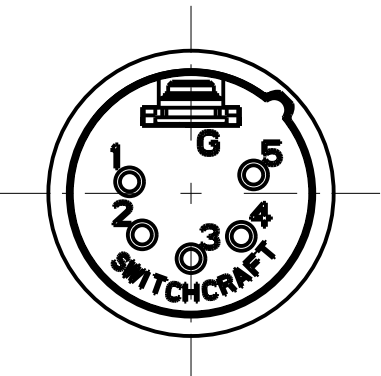
8 7 6 5 4 3 2 1



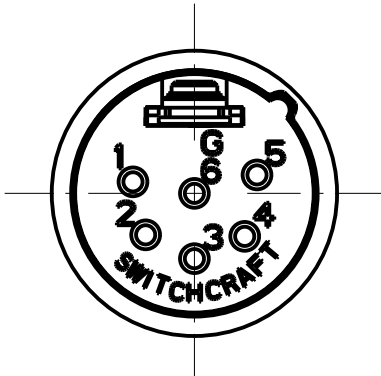
3 PIN



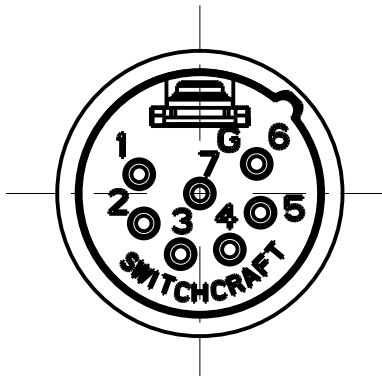
4 PIN



5 PIN



6 PIN



7 PIN

STANDARD SERIES

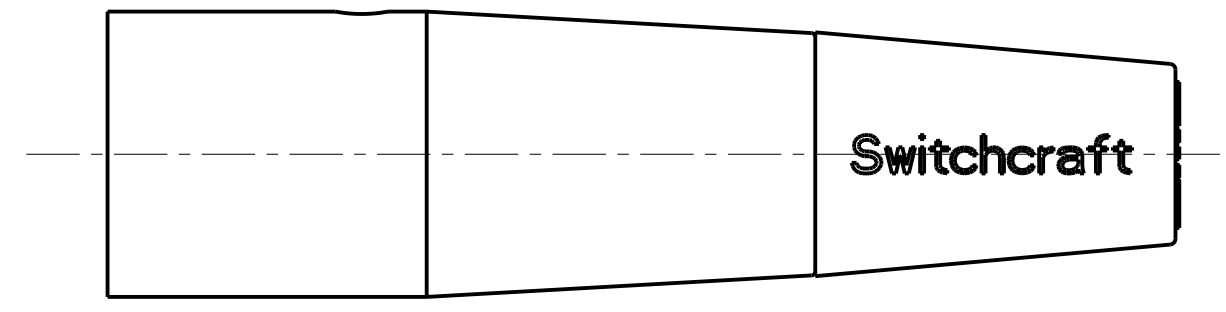
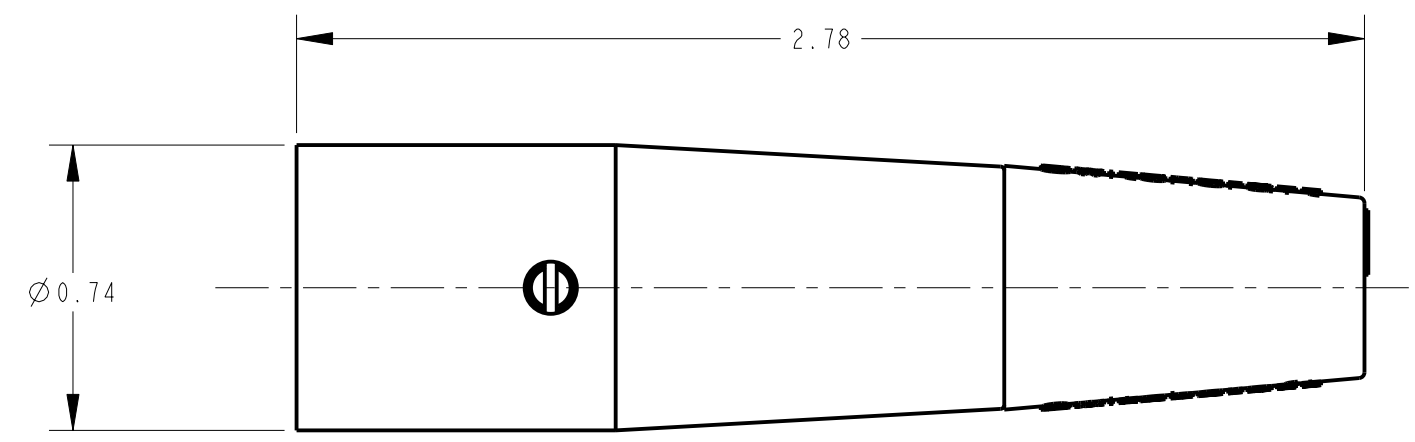
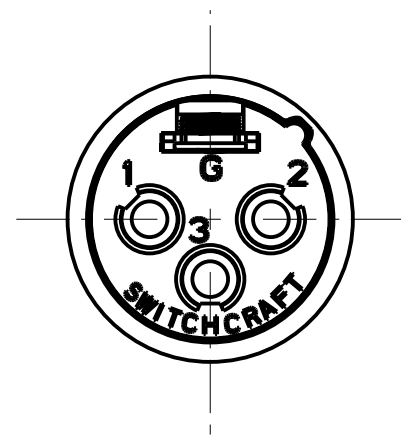
INSERT SCREW - STAINLESS STEEL
 HOUSING - ZINC, NICKEL PLATED
 TUBULAR INSULATOR - MYLAR
 CABLE CLAMP - BRASS, ELECTRO TIN
 FLEX RELIEF - HI-FAX, BLACK
 INSULATOR - POLYESTER, GREEN OR BLACK
 PIN - BRASS, SILVER PLATED

- AA - M
- ↑ COLOR OF FLEX RELIEF
 - 01 = BROWN
 - 02 = RED
 - 03 = ORANGE
 - 04 = YELLOW
 - 05 = GREEN
 - 06 = BLUE
 - 07 = VIOLET
 - 08 = GRAY
 - 09 = WHITE
 - BLANK = BLACK
- ↑ CONTACT PLATING
 - BLANK = SILVER (STANDARD)
 - AU = GOLD
- ↑ HOUSING FINISH & INSULATOR COLOR
 - BLANK = NICKEL PLATED HOUSING
GREEN INSULATOR
 - B = BLACK HOUSING & INSULATOR
- ↑ FLEX RELIEF SIZE
 - BLANK = STANDARD SIZE (0.210 TO 0.300)
 - L = LARGE CABLES (0.300 TO .0328)
 - S = SMALL CABLES (0.105 TO 0.205)
- ↑ NO. OF CONTACTS:
 - 3 = 3 CONTACTS
 - 4 = 4 CONTACTS
 - 5 = 5 CONTACTS
 - 6 = 6 CONTACTS
 - 7 = 7 CONTACTS

PROFESSIONAL SERIES

SAME AS ABOVE EXCEPT
 CONTACT PIN - PHOSPHOR BRONZE, GOLD OVER NICKEL
 FLEX RELIEF - GRAY

- AQGP - 23
- ↑ NO. OF CONTACTS:
 - 3 = 3 CONTACTS
 - 4 = 4 CONTACTS
 - 5 = 5 CONTACTS
 - 6 = 6 CONTACTS
 - 7 = 7 CONTACTS



- NOTES:**
- ALL DIMENSIONS REFERENCE UNLESS OTHERWISE SPECIFIED.
 - SHIPPED WITH PIN AND BASE ASSEMBLY NOT FULLY ASSEMBLED.

CUSTOMER DRAWING

G	22706	9-29-99	JL	DG	★ STAR SYMBOL DENOTES CRITICAL DIMENSION	THIS DRAWING DESCRIBES A DESIGN CONSIDERED PROPRIETARY IN NATURE, DEVELOPED AND MANUFACTURED BY SWITCHCRAFT INC. AND IS RELEASED ON A CONFIDENTIAL BASIS FOR IDENTIFICATION PURPOSES ONLY.
F	20762	12-4-96	MM	RB		
E	20642	1-27-96	SG	SG	UNLESS OTHERWISE SPECIFIED	SIZE WIDTH MULT LBS/M TEMPER
					1. ALL DIMENSIONS IN INCHES - TWO PLACE DECIMALS ±0.01 - THREE PLACE DECIMALS ±0.005 - ANGLES ±1° - ALL DIA. CONCENTRIC WITHIN 0.005 T.I.R.	FINISH SPEC No. MATERIAL SPEC No.
K	26965	5-25-12	TO	TJK	2. FEATURES ON THE SAME CENTERLINE MUST BE ALIGNED WITHIN ±0.002	FIRST USED ON SCALE 2:1
J	26936	3-26-12	TO	TJK	3. REMOVE ALL BURRS	DATE DRAWN BY CHKD APVD 6-8-94 SG 8-10-94 8-10-94
H	22838	9-29-99	JL	DG	DO NOT SCALE DRAWING	NAME AA SERIES MALE OG SHEET OF
REV	ECO NUMBER	DATE	BY	APVD		Switchcraft® PART No. AA_M SERIES REV K