



Chipsmall Limited consists of a professional team with an average of over 10 year of expertise in the distribution of electronic components. Based in Hongkong, we have already established firm and mutual-benefit business relationships with customers from,Europe,America and south Asia,supplying obsolete and hard-to-find components to meet their specific needs.

With the principle of "Quality Parts,Customers Priority,Honest Operation,and Considerate Service",our business mainly focus on the distribution of electronic components. Line cards we deal with include Microchip,ALPS,ROHM,Xilinx,Pulse,ON,Everlight and Freescale. Main products comprise IC,Modules,Potentiometer,IC Socket,Relay,Connector.Our parts cover such applications as commercial,industrial, and automotives areas.

We are looking forward to setting up business relationship with you and hope to provide you with the best service and solution. Let us make a better world for our industry!



Contact us

Tel: +86-755-8981 8866 Fax: +86-755-8427 6832

Email & Skype: info@chipsmall.com Web: www.chipsmall.com

Address: A1208, Overseas Decoration Building, #122 Zhenhua RD., Futian, Shenzhen, China



Model

AAD600S

600 Watts_{max} output power

Power Factor Correction

Single Output

H.A.L.T.
TESTED

Highly Accelerated Life Testing

Electrical Specifications

Input Voltage:	85-264 VAC, 47-63 Hz
Input Current:	<6.5A RMS @ 115 VAC @ full load <3.5A RMS @ 230 VAC @ full load 9.0A RMS @ 85 VAC @ full load
Inrush Current:	<20A, pk @ 110 VAC, active soft start <40A, pk @ 220 VAC, active soft start (Active independant of cold or warm start)
Power Factor:	>0.99 @ full load @ 230VAC input
Harmonic Distortion:	Meets IEC1000-3-2
EMI Filtering:	Meets CISPR 11 and 22 and FCC Part 15 Class B (conducted)
Input Protection:	Internal AC line fuse; 250 VAC, 10A
Surge Withstand:	Meets EN61000-4-4 Level 3 and EN61000-4-5 Level 3
Output Power:	Up to 600W continuous
Line Regulation:	± 0.1%
Load Regulation:	±0.25%
PARD:	<1% or 250mV 20MHz bandwidth
Hold-up Time:	>16 ms @ full load
Output Polarity:	Output is floating
Minimum Load:	None
Transient Response:	2% for 25% load change @ 1A/μs
Output Rise Time:	<100 ms (10% to 90%)
Remote Sense:	Standard
Current Share:	Within 5%
Remote On/Off:	Ground or TTL _{LOW} = OFF Open or TTL _{HIGH} = ON



AC Power Fail:	TTL _{LOW} logic "0" at least 2 ms before DC output drops 5% (without signal jitter). Open collector.
DC OK:	Open collector when output voltage is above 95% of rated
Overcurrent/Short Circuit:	Square current limit; 105-130% of rated
Overvoltage Protection:	Factory set, 125% ±5% cycle AC to reset
Reverse Voltage:	Reverse current up to rated outputs
Thermal Protection:	Auto off; auto reset upon cool down
Efficiency:	Up to 92%
MTBF:	MIL-STD-HDBK 217E 200,000 hours @ 25°C, ground benign, Highly Accelerated Life Testing

Available Voltage Outputs*

Voltage Codes	Voltages (Volts)	Continuous Current (Amps)
-4	12	42
-5	15	36
-6	24	23
-7	28	20
-8	36	16
-9	48	12.5

* Consult factory for other voltages and OEM quantities.

Note: Standard models are shown **bold**

PART # STRUCTURE:

MODEL - **VOLTAGE CODE** - **OPTION CODES** (See back)

- **V1** -

AAD600S - **X** - **ABC...**

Example: Part Number **AAD600S-8-CF** = 600W Power Factor Corrected, 36V @ 16A with sealed pots and overcurrent foldback mode.

[CLICK HERE TO SEE THE AAD600S CODE TABLE AND AVAILABLE OPTIONS.](#)

Model

AAD600S



Options (code)

- | | |
|----------------------------------|---------------------------------|
| DC OK Invert (U) | PF Invert (B) |
| Metric Mounting (M) | Remote On/Off Invert (S) |
| OR-ing Diodes (O) | Overcurrent Hiccup Mode (D) |
| Droop Current Share (A) | Overcurrent Latch-off Mode (E) |
| Gold Plated Signal Connector (G) | Overcurrent Foldback Mode (F) |
| Sealed Pots (C) | Standby Power (5VDC @ 1A) (P)** |

**Voltage available as long as AC input is present

Certifications

- NRTL*** to UL60950-1, CSA C22.2 60950-1-03
- BAUART Certification to EN60950-1
- CB Test Report in Accordance with IEC60950-1
- CE Declaration to Low Voltage Directive 72/73/EEC

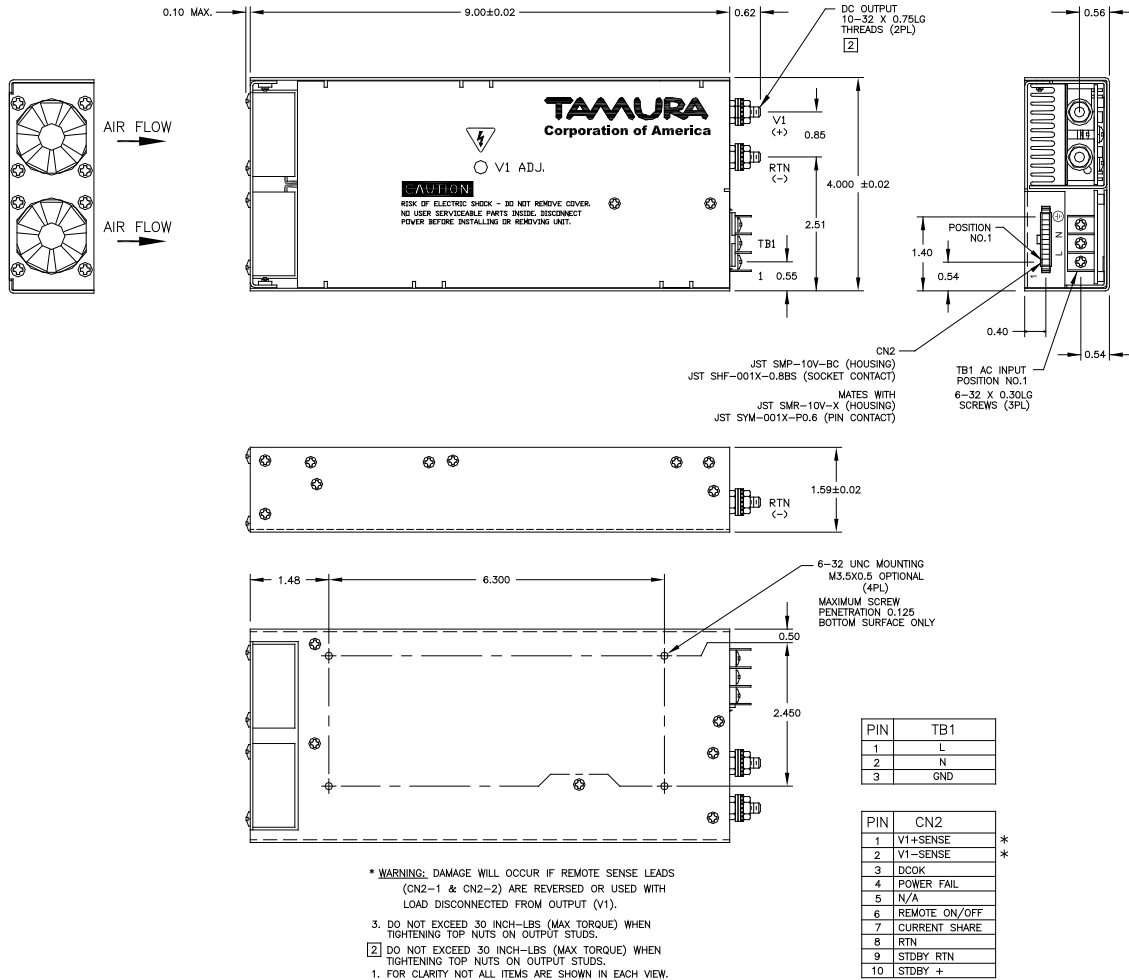
*** Nationally Recognized Test Laboratory

Compliance

- | | |
|---|--------------------------------|
| EN61000-4-5 Level 3 | EN61000-4-2 Level 2 |
| EN61000-3-2 | EN61000-4-2 Level 3 (Air Only) |
| EN61000-4-4 Level 3 | EN61000-4-11 |
| CISPR 11 and 22 FCC Part 15 Class B (conducted) | |

Physical Specifications

- | | |
|---------------------|--|
| Dimensions: (HxWxL) | 1.59" x 4" x 9" |
| Operating Temp: | 0 to 70°C; rated power to 50°C derate linearly to 50% at 70°C. |
| Relative Humidity: | 5% to 90%, non-condensing |
| Storage: | -50 to 85°C/20-90% RH |
| Altitude: | 6,561' operating;
40,000' storage |



© Copyright 2011 TAMURA CORPORATION OF AMERICA. Specifications subject to change without notice.



TAMURA CORPORATION OF AMERICA
1040 South Andreasen Drive, STE. 100 Escondido, CA 92029-1951
(951) 699-1270 / Fax: (951) 676-9482
(800) 472-6624 www.tamuracorp.com

