



Chipsmall Limited consists of a professional team with an average of over 10 year of expertise in the distribution of electronic components. Based in Hongkong, we have already established firm and mutual-benefit business relationships with customers from,Europe,America and south Asia,supplying obsolete and hard-to-find components to meet their specific needs.

With the principle of "Quality Parts,Customers Priority,Honest Operation,and Considerate Service",our business mainly focus on the distribution of electronic components. Line cards we deal with include Microchip,ALPS,ROHM,Xilinx,Pulse,ON,Everlight and Freescale. Main products comprise IC,Modules,Potentiometer,IC Socket,Relay,Connector.Our parts cover such applications as commercial,industrial, and automotives areas.

We are looking forward to setting up business relationship with you and hope to provide you with the best service and solution. Let us make a better world for our industry!



Contact us

Tel: +86-755-8981 8866 Fax: +86-755-8427 6832

Email & Skype: info@chipsmall.com Web: www.chipsmall.com

Address: A1208, Overseas Decoration Building, #122 Zhenhua RD., Futian, Shenzhen, China



LOW FREQUENCY REFLOWABLE CYLINDRICAL WATCH CRYSTAL



6.0 x φ1.9mm

AB26TRB

Pb in high melting temperature type solders
(exempt per RoHS 2002/95/EC Annex (7a))

RoHS
Compliant

FEATURES:

- Formed leads for low cost SMD type
- Excellent shock resistance
- Reflow Capable
- Low cost for consumer applications
- IR reflow capable

APPLICATIONS:

- Real time clock
- Measuring instruments
- Blue-tooth and wireless applications

STANDARD SPECIFICATIONS:

Parameters	Minimum	Typical	Maximum	Units	Notes
Center Frequency		32.768		kHz	
Operating Temperature	-40		+85	°C	
Turnover Temperature	+20	+25	+30	°C	
Storage Temperature	-55		+125	°C	
Frequency Tolerance @+25°C	-20		+20	ppm	
Frequency Coefficient (β)	-0.040	-0.034	-0.028	ppm/T ²	
Equivalent series resistance (R1)		35	50	kΩ	@25°C
Shunt capacitance (C0)		1.35		pF	
Load capacitance (CL)		12.5		pF	
Drive Level			1	μW	
Quality Factor		70,000			
Aging	-3		+3	ppm	@25°C±3°C First year
Insulation Resistance	500			MΩ	@ 100Vdc ± 15V

OPTIONS & PART IDENTIFICATION: (Left blank if standard)

AB26TRB-32.768kHz - - -

Load Capacitance (pF)
Blank: 12.5pF
6: 6pF
10: 10pF

Freq. Tolerance
1: ± 10 ppm
7: ± 15 ppm

Packaging
Blank: Bulk
T: Tape & Reel

LOW FREQUENCY REFLOWABLE CYLINDRICAL WATCH CRYSTAL



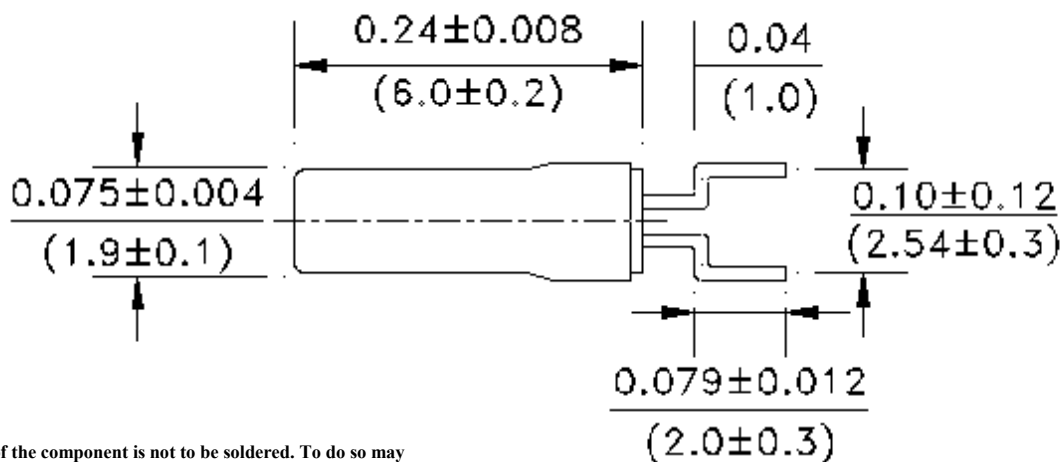
6.0 x ϕ 1.9mm

AB26TRB

Pb in high melting temperature type solders
(exempt per RoHS 2002/95/EC Annex (7a))

RoHS
Compliant

OUTLINE DIMENSIONS:

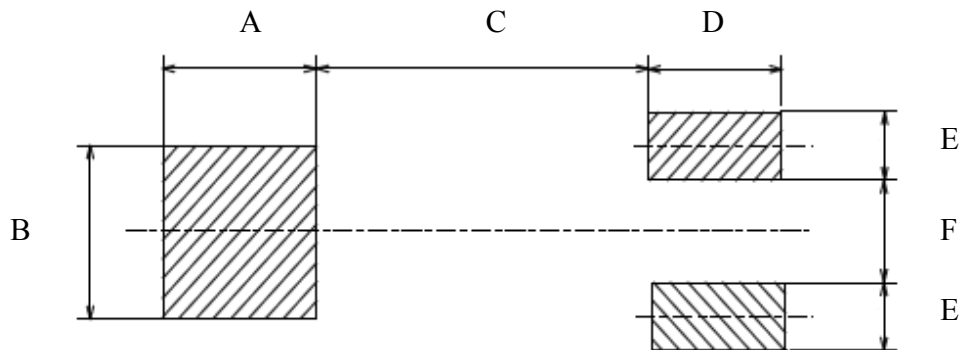


NOTE:

The body/can of the component is not to be soldered. To do so may cause damage to the crystal.

Use Adhesive/Bonding Materials (i.e. Rubber Adhesive, Epoxy, etc) to affix the component body to the PCB.

Recommended Land Pattern



A	B	C	D	E	F
0.099 (2.5)	0.099 (2.5)	0.21 (5.25)	0.099 (2.5)	0.04 (1)	0.06 (1.5)

Dimensions: inches (mm)

LOW FREQUENCY REFLOWABLE CYLINDRICAL WATCH CRYSTAL

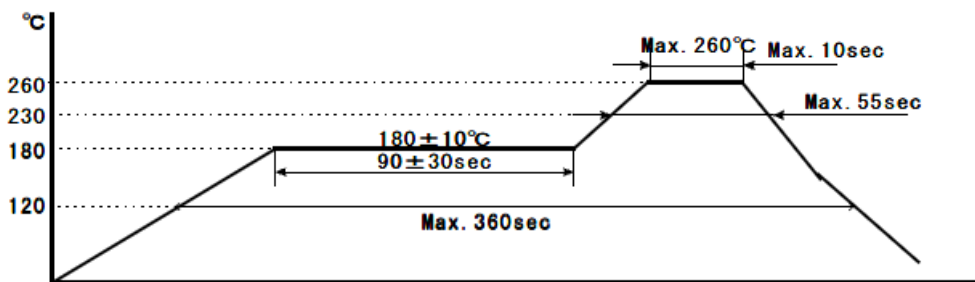


6.0 x ϕ 1.9mm

AB26TRB

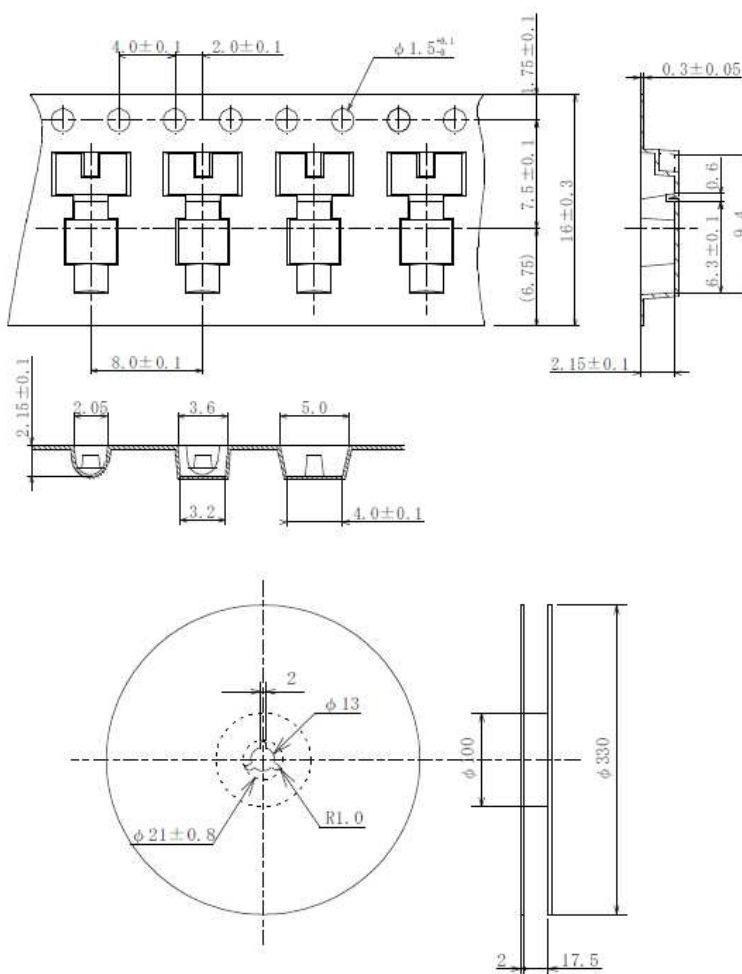
Pb in high melting temperature type solders
(exempt per RoHS 2002/95/EC Annex (7a)) **RoHS
Compliant**

REFLOW PROFILE:



TAPE & REEL:

Packaging: 2000pcs/reel



Dimensions: mm

ATTENTION: Abracon Corporation's products are COTS – Commercial-Off-The-Shelf products; suitable for Commercial, Industrial and, where designated, Automotive Applications. Abracon's products are not specifically designed for Military, Aviation, Aerospace, Life-dependant Medical applications or any application requiring high reliability where component failure could result in loss of life and/or property. For applications requiring high reliability and/or presenting an extreme operating environment, written consent and authorization from Abracon Corporation is required. Please contact Abracon Corporation for more information.

ABRACON IS
ISO9001:2008
CERTIFIED



Visit www.abracon.com for Terms & Conditions of Sale **Revised: 04.24.13**
30332 Esperanza, Rancho Santa Margarita, California 92688
tel 949-546-8000 | fax 949-546-8000 | www.abracon.com