



Chipsmall Limited consists of a professional team with an average of over 10 year of expertise in the distribution of electronic components. Based in Hongkong, we have already established firm and mutual-benefit business relationships with customers from,Europe,America and south Asia,supplying obsolete and hard-to-find components to meet their specific needs.

With the principle of “Quality Parts,Customers Priority,Honest Operation,and Considerate Service”,our business mainly focus on the distribution of electronic components. Line cards we deal with include Microchip,ALPS,ROHM,Xilinx,Pulse,ON,Everlight and Freescale. Main products comprise IC,Modules,Potentiometer,IC Socket,Relay,Connector.Our parts cover such applications as commercial,industrial, and automotives areas.

We are looking forward to setting up business relationship with you and hope to provide you with the best service and solution. Let us make a better world for our industry!



## Contact us

Tel: +86-755-8981 8866 Fax: +86-755-8427 6832

Email & Skype: [info@chipsmall.com](mailto:info@chipsmall.com) Web: [www.chipsmall.com](http://www.chipsmall.com)

Address: A1208, Overseas Decoration Building, #122 Zhenhua RD., Futian, Shenzhen, China



SPECIFICATIONS

FITS:  
RB1 Series

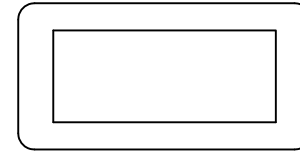
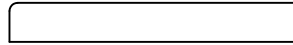
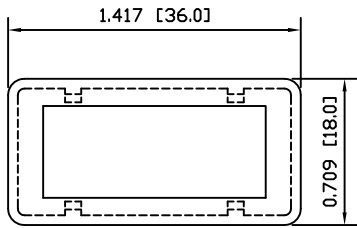
APPROVALS:  
**RoHS**  
COMPLIANT

MATERIALS

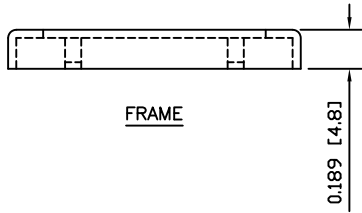
FRAME:  
Polyamide 6/6 (PA66)  
CAP:  
Polyvinyl Chloride (PVC)

COLORS

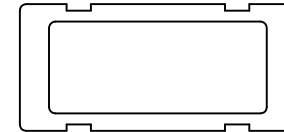
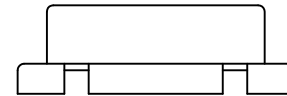
FRAME:  
White  
CAP:  
Clear



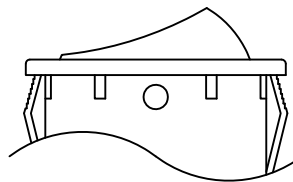
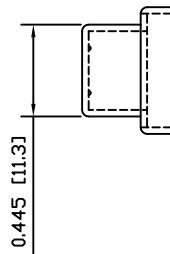
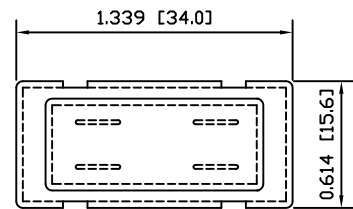
FRAME



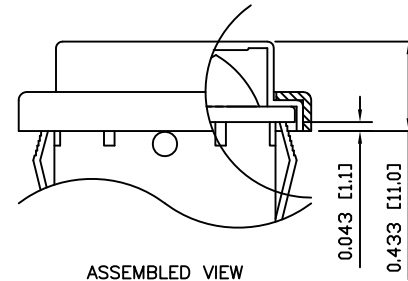
FRAME



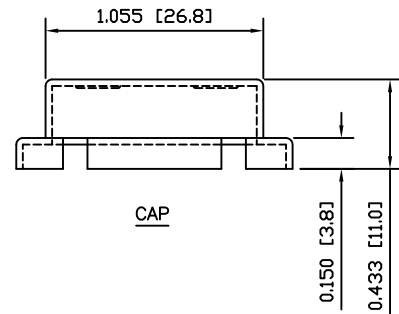
CAP



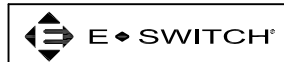
EXPLODED VIEW



ASSEMBLED VIEW



CAP



ACC-F01-2

THE INFORMATION CONTAINED IN THIS DOCUMENT IS PROPRIETARY TO E-SWITCH AND IS NOT TO BE COPIED OR TRANSFERRED

A  
REV.

INITIAL RELEASE  
DESCRIPTION

18758  
PCR

10/01/19  
DATE

CAB  
DRAWN BY

DIMENSIONS  
INCHES [MILLIMETERS]  
GENERAL TOLERANCES  
 $\pm 0.012$  [ $\pm 0.3$ ] /  $\pm 1^\circ$   
SCALE  
DRAWING NOT TO SCALE



DRAWING NUMBER  
38-ACCF012

DATE  
JANUARY 19, 2010

REVISION  
A