



Chipsmall Limited consists of a professional team with an average of over 10 year of expertise in the distribution of electronic components. Based in Hongkong, we have already established firm and mutual-benefit business relationships with customers from,Europe,America and south Asia,supplying obsolete and hard-to-find components to meet their specific needs.

With the principle of “Quality Parts,Customers Priority,Honest Operation,and Considerate Service”,our business mainly focus on the distribution of electronic components. Line cards we deal with include Microchip,ALPS,ROHM,Xilinx,Pulse,ON,Everlight and Freescale. Main products comprise IC,Modules,Potentiometer,IC Socket,Relay,Connector.Our parts cover such applications as commercial,industrial, and automotives areas.

We are looking forward to setting up business relationship with you and hope to provide you with the best service and solution. Let us make a better world for our industry!



## Contact us

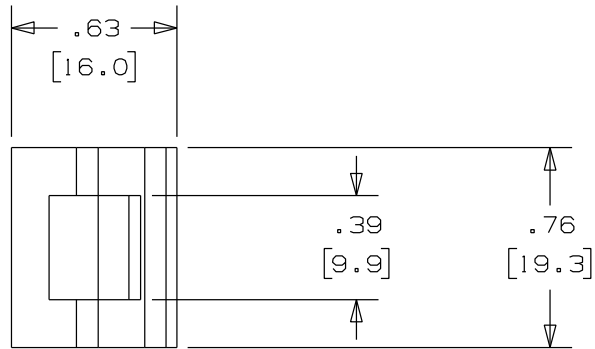
Tel: +86-755-8981 8866 Fax: +86-755-8427 6832

Email & Skype: info@chipsmall.com Web: www.chipsmall.com

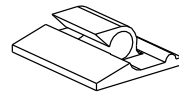
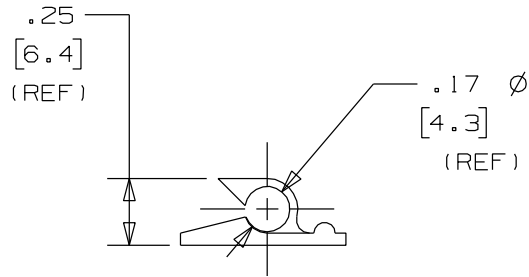
Address: A1208, Overseas Decoration Building, #122 Zhenhua RD., Futian, Shenzhen, China



THIS COPY IS PROVIDED ON A RESTRICTED BASIS AND IS NOT TO BE USED IN ANY WAY DETRIMENTAL TO THE INTERESTS OF PANDUIT CORP.



PANDUIT PART NUMBER*	MAXIMUM CABLE DIA. in. (mm)	WEIGHT lbs. (g)/100pcs
ACC19	.19 (4.8)	.17 (77)



SCALE: FULL

NOTES:

- \* 1) SEE [www.panduit.com](http://www.panduit.com) FOR CURRENT PART NUMBER SUFFIX DESIGNATION AND FOR PACKAGE SIZE AND PART COLOR.

REV	DATE	BY	CHK	APR	DESCRIPTION	ECN	TITLE	ITEM REVISION NAME	DRAWING NUMBER:	SCALE	SIZE	
01	6/13/13	BWG	JADE	RTFI	REVISED TITLE BORDER. REMOVED MATERIAL CODE FROM CHART.	GB0239KY/01	ADHESIVE CORD CLIP ACC19	10B015KB/00	GB0239KY	1.5X	A	
							CUSTOMER DRAWING					
							DATASET FILE NAME					
							10B015KB/00 - GB0239KY_REV01					
							UNLESS OTHERWISE SPECIFIED, DIMENSIONAL TOLERANCES ARE: IN (mm)		MATERIAL:			
							.x ± N/A .xxx ± N/A		NYLON 6/6			
							.xx ± .02 (.5) ANGLES ± 5°		DRAWING NUMBER:			
							THIRD ANGLE PROJECTION		GB0239KY			
							DRWN BY	DATE	CHK	SCALE		SHT 1 OF 1
							JAD	12/10/03		1.5X		A

D10100DAY15