



Chipsmall Limited consists of a professional team with an average of over 10 year of expertise in the distribution of electronic components. Based in Hongkong, we have already established firm and mutual-benefit business relationships with customers from,Europe,America and south Asia,supplying obsolete and hard-to-find components to meet their specific needs.

With the principle of “Quality Parts,Customers Priority,Honest Operation,and Considerate Service”,our business mainly focus on the distribution of electronic components. Line cards we deal with include Microchip,ALPS,ROHM,Xilinx,Pulse,ON,Everlight and Freescale. Main products comprise IC,Modules,Potentiometer,IC Socket,Relay,Connector.Our parts cover such applications as commercial,industrial, and automotives areas.

We are looking forward to setting up business relationship with you and hope to provide you with the best service and solution. Let us make a better world for our industry!



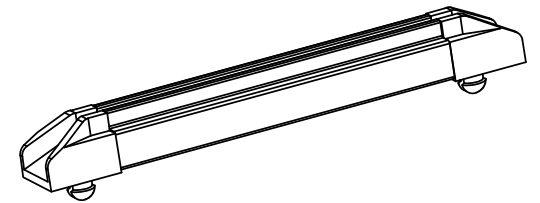
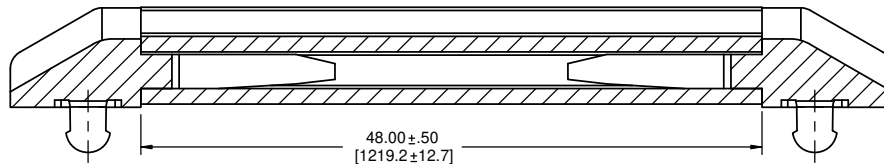
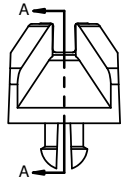
Contact us

Tel: +86-755-8981 8866 Fax: +86-755-8427 6832

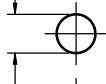
Email & Skype: info@chipsmall.com Web: www.chipsmall.com

Address: A1208, Overseas Decoration Building, #122 Zhenhua RD., Futian, Shenzhen, China



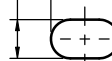


Ø .125 [3.2] / Ø .128 [3.3]

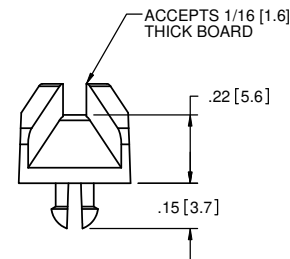
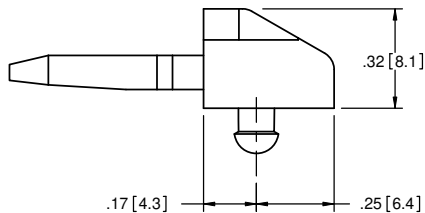
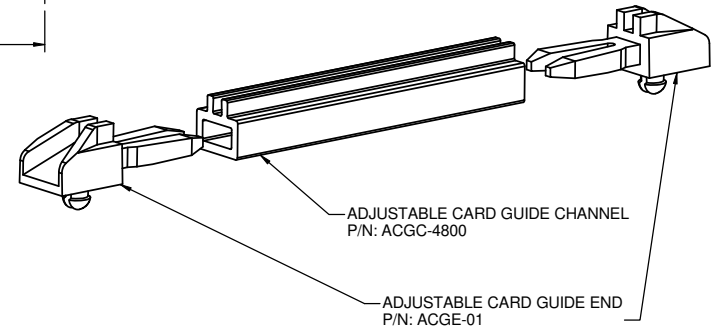
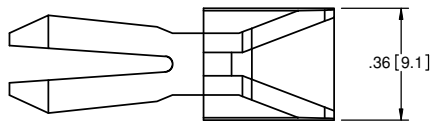


SECTION A-A
SCALE 2.5 : 1

.125 [3.2] / .128 [3.3] .22 [5.5]

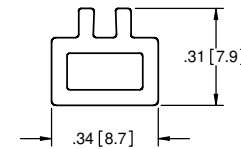


48.34 ± .50
[1227.8 ± 12.7]
MOUNTING HOLES



P/N: ACGE-01

1. MATERIAL: NYLON 6/6 (RMS-01)
2. COLOR: NATURAL



P/N: ACGC-4800

1. MATERIAL: PVC (RMS-04)
2. COLOR: NATURAL

NOTES:
1. PART NO. ACGC-4800 CAN BE CUT TO ANY LENGTH BY SPECIAL ORDER.
EXAMPLE: IF MOUNTING HOLES DISTANCE IS 5.00 [127.0], SUBTRACT .34 [8.6] FROM IT.
THEN YOUR CHANNEL LENGTH IS 4.66 [118.4].

REV.	DESCRIPTION	ENGR.	DATE
E	SEE CO 200462 FOR CHANGES	SK	10/23/05
D	SEE ECN #1018 FOR CHANGES	SK	06/14/05
C	SEE ECN #800 FOR CHANGES	SM	06/14/04
B	P/N WAS ACGC-04 AND FILE # WAS 03060	SM	11.15.00
A	CONVERTED TO ACAD	PB	01.16.95

TITLE: ADJUSTABLE CARD GUIDE				DWG IN IN [MM]		FINAL	
FILE #: ACGC-ACGE	DWN: P.B.	APP: -					
SHEET: 1 OF 1	SHEET SIZE: B	DT: 01/16/95	CHKD: -	PART #			
RE: RICHCO, INC.		RICHCO, INC. ENG@RICHCO-INC.COM (773) 539-4060		SEE DRAWING		PRINT TYPE	
						CA	