



Chipsmall Limited consists of a professional team with an average of over 10 year of expertise in the distribution of electronic components. Based in Hongkong, we have already established firm and mutual-benefit business relationships with customers from,Europe,America and south Asia,supplying obsolete and hard-to-find components to meet their specific needs.

With the principle of “Quality Parts,Customers Priority,Honest Operation,and Considerate Service”,our business mainly focus on the distribution of electronic components. Line cards we deal with include Microchip,ALPS,ROHM,Xilinx,Pulse,ON,Everlight and Freescale. Main products comprise IC,Modules,Potentiometer,IC Socket,Relay,Connector.Our parts cover such applications as commercial,industrial, and automotives areas.

We are looking forward to setting up business relationship with you and hope to provide you with the best service and solution. Let us make a better world for our industry!



## Contact us

Tel: +86-755-8981 8866 Fax: +86-755-8427 6832

Email & Skype: info@chipsmall.com Web: www.chipsmall.com

Address: A1208, Overseas Decoration Building, #122 Zhenhua RD., Futian, Shenzhen, China

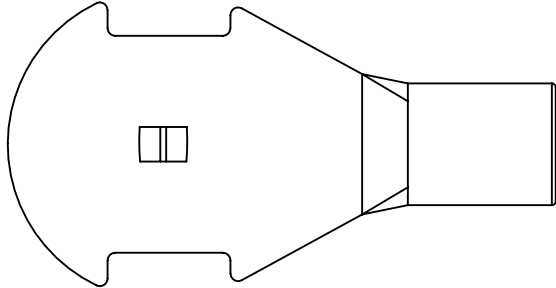


THIS COPY IS PROVIDED ON A RESTRICTED BASIS AND IS NOT TO BE USED IN ANY WAY DETRIMENTAL TO THE INTERESTS OF PANDUIT CORP.

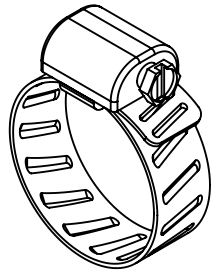
KIT PART NUMBER	CLAMP PART NUMBER
ACGK	#10
ACGKX	#16

NOTES:

1. KIT INCLUDES ARMORED CABLE GROUNDING TERMINAL AND MECHANICAL CLAMP
2. FOR USE WITH UNJACKETED ARMOR CABLE. DIAMETER RANGE - .440" - 1.250".




ARMORED CABLE GROUNDING TERMINAL (QTY. 1)



#10 MECHANICAL CLAMP, 9/16" - 1-1/16" DIAMETER RANGE (QTY. 1)

#16 MECHANICAL CLAMP, 15/16" - 1-1/2" DIAMETER RANGE (QTY. 1)

03	5/11	JHNU	RWK	REVISED NOTE 2: 1.250" WAS 1.000"	N41755BB-C41755	RGB	RGB	 <b>PANDUIT CORP. TINLEY PARK, ILLINOIS</b> ARMORED CABLE GROUNDING KITS (ACGK, ACGKX) CUSTOMER DRAWING
02	5/11	JHNU	RWK	REMOVED TERMINAL PART NUMBER COLUMN REMOVED CLAMP PART NUMBER	N41755BB-C41755	FLD	FLD	
01	4/11	JHNU	RWK	ADDED PART NUMBER ACGKX ADDED PART NUMBER TABLE	N41755BB-C41755	FLD	FLD	
00	6/08	JHNU	JMAR	DRAWING RELEASED				
<b>REV</b>	<b>DATE</b>	<b>BY</b>	<b>CHK</b>	<b>DESCRIPTION</b>	<b>ECN</b>	<b>-R</b>	<b>SUP</b>	<b>DRAWN BY</b> JHNU <b>CHK'D</b>  <b>SCALE</b> NONE <b>DRAWING NO / CAD FILE</b> C41755_03