



Chipsmall Limited consists of a professional team with an average of over 10 year of expertise in the distribution of electronic components. Based in Hongkong, we have already established firm and mutual-benefit business relationships with customers from,Europe,America and south Asia,supplying obsolete and hard-to-find components to meet their specific needs.

With the principle of "Quality Parts,Customers Priority,Honest Operation,and Considerate Service",our business mainly focus on the distribution of electronic components. Line cards we deal with include Microchip,ALPS,ROHM,Xilinx,Pulse,ON,Everlight and Freescale. Main products comprise IC,Modules,Potentiometer,IC Socket,Relay,Connector.Our parts cover such applications as commercial,industrial, and automotives areas.

We are looking forward to setting up business relationship with you and hope to provide you with the best service and solution. Let us make a better world for our industry!



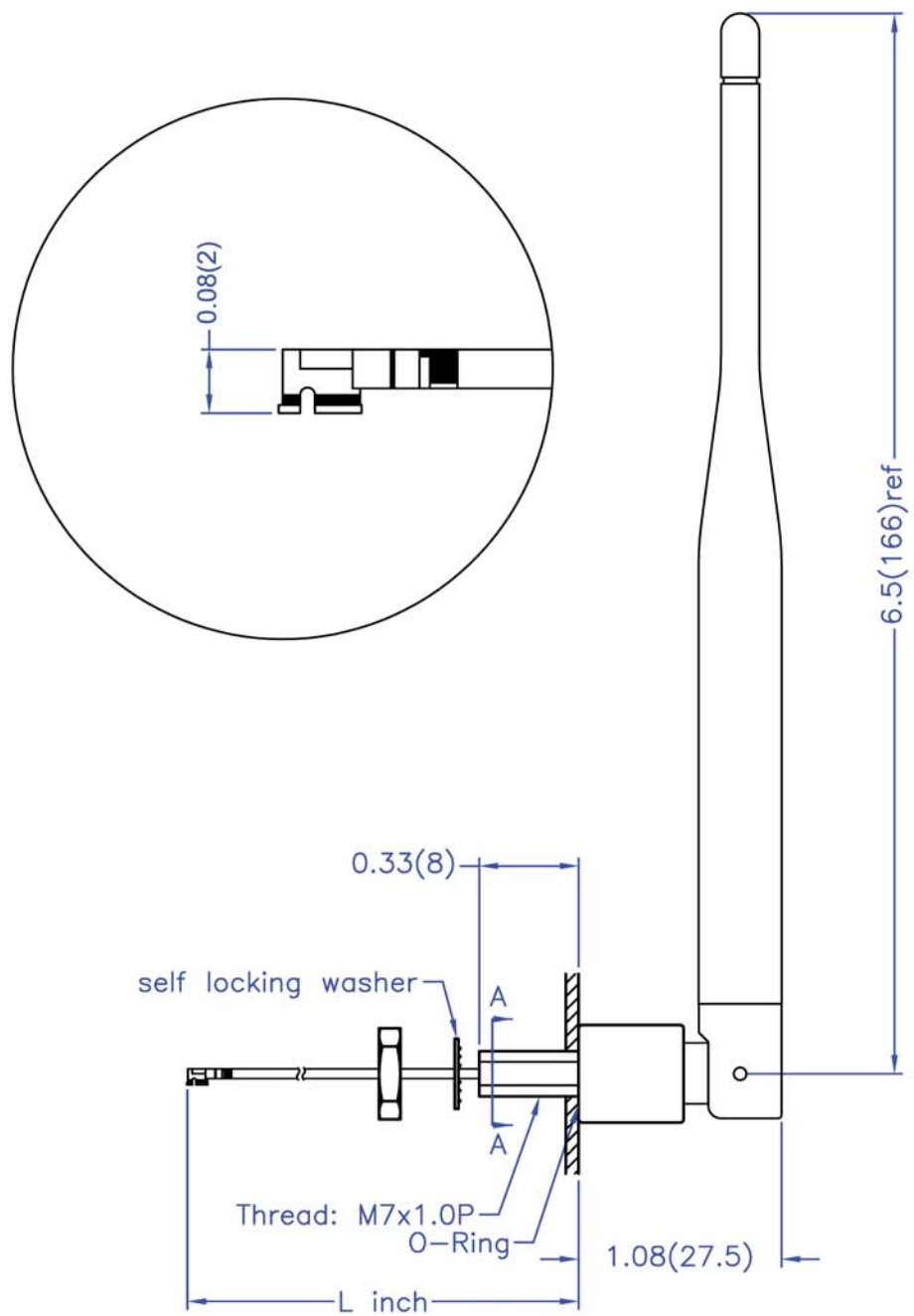
## Contact us

Tel: +86-755-8981 8866 Fax: +86-755-8427 6832

Email & Skype: info@chipsmall.com Web: www.chipsmall.com

Address: A1208, Overseas Decoration Building, #122 Zhenhua RD., Futian, Shenzhen, China





Electrical Properties:

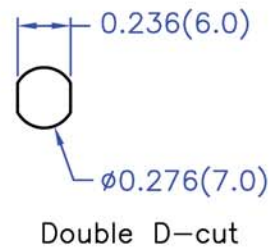
Frequency Range: 2.4~2.5 GHz  
 Impedance: 50Ω nominal  
 VSWR: <2.0:1  
 Gain: \*5.0 dBi  
 Radiation: Omni  
 Polarization: Vertical

\*Gain is measured under without flying lead.

Mechanical Properties:

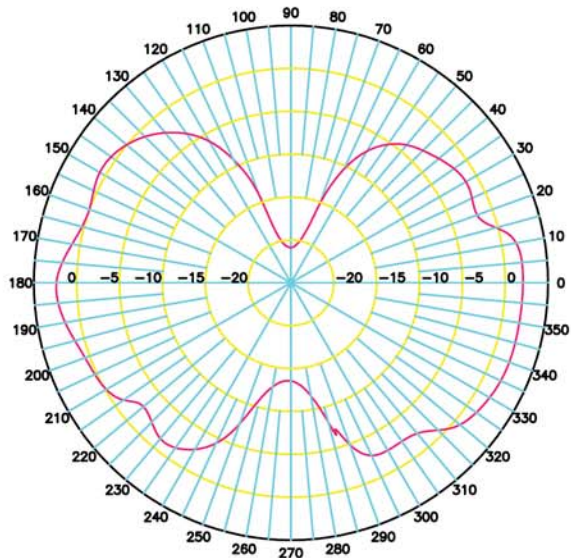
Cable: 1.37mm coaxial cable, standard length L=5 inches.  
 Connector: IPEX plug connector, Hirose U.FL compatible(female)  
 Material:  
     Overmold: Polyurethane(Black); BASF  
     Swivel: Polyurethane(Black); BASF and Polycarbonate(Black); Bayer  
 Operation Temp.: -20°C to +65°C  
 Storage Temp.: -30°C to +75°C

A-A view-Thread cross-section

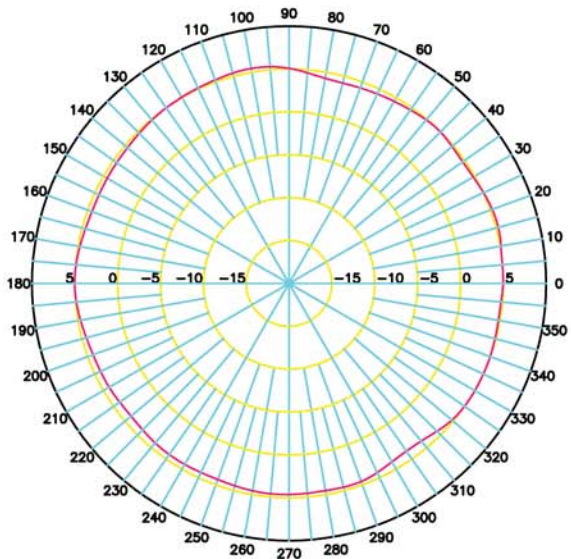


|         |  |               |       |
|---------|--|---------------|-------|
| TITLE   | 2.4 GHz Fixed Mount Swivel Antenna - 151 Model | DATE          | SHEET |
| UNIT    | DWG. NO.                                       | ACH2-AT-DP004 |       |
| in.(mm) |  |               |       |
| SCALE   | DPAC Technologies                              |               |       |
| None    |  |               |       |

E-Plane Pattern @ 2.45GHz



H-Plane Pattern @ 2.45GHz



| L (inch) | Attenuation (dB) |
|----------|------------------|
| 3"       | 0.23 dB          |
| 4"       | 0.30 dB          |
| 5"       | 0.38 dB          |
| 6"       | 0.45 dB          |
| 8"       | 0.60 dB          |
| 10"      | 0.75 dB          |
| 12"      | 0.90 dB          |

Flying Lead Cable Length v.s. Attenuation Table  
1.37mm Cable Measured @ 2.45GHz

|         |  |               |       |
|---------|--|---------------|-------|
| TITLE   | 2.4 GHz Fixed Mount Swivel Antenna - 151 Model | DATE          | SHEET |
| UNIT    | DWG. NO.                                       | ACH2-AT-DP004 |       |
| in.(mm) | DPAC Technologies                              |               |       |
| SCALE   |  |               |       |