



Chipsmall Limited consists of a professional team with an average of over 10 year of expertise in the distribution of electronic components. Based in Hongkong, we have already established firm and mutual-benefit business relationships with customers from,Europe,America and south Asia,supplying obsolete and hard-to-find components to meet their specific needs.

With the principle of "Quality Parts,Customers Priority,Honest Operation,and Considerate Service",our business mainly focus on the distribution of electronic components. Line cards we deal with include Microchip,ALPS,ROHM,Xilinx,Pulse,ON,Everlight and Freescale. Main products comprise IC,Modules,Potentiometer,IC Socket,Relay,Connector.Our parts cover such applications as commercial,industrial, and automotives areas.

We are looking forward to setting up business relationship with you and hope to provide you with the best service and solution. Let us make a better world for our industry!



Contact us

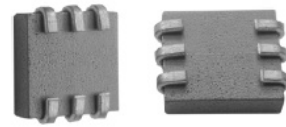
Tel: +86-755-8981 8866 Fax: +86-755-8427 6832

Email & Skype: info@chipsmall.com Web: www.chipsmall.com

Address: A1208, Overseas Decoration Building, #122 Zhenhua RD., Futian, Shenzhen, China



Surface Mount Ferrite Chip Beads Array



5.60 x 5.00 x 1.50mm

ACSB-04-T



RoHS/RoHS II Compliant

FEATURES:

- Suitable for high density mounting or where board space is at a premium.
- Superior attenuation across a broad frequency range up to GHz range.
- Wide operating temperature range of -40°C to +85°C.
- RoHS Compliant and lead free.

APPLICATIONS:

- Notebooks, Tablets, Smartphones, Cameras, DVD/Blu-ray players, LED TVs, Motherboards, Power Supplies, Modems

STANDARD SPECIFICATIONS:

PARAMETERS

ABRACON P/N:	ACSB-04-T
Operating temperature:	-40°C to +85°C
Storage Temperature and Humidity (In Tape and Reel)	+5°C to +40°C, 60% to 70% RH

Key Electrical Specifications

Impedance	Test Frequency	RDC	IDC
Ω	MHz	Ω Max	A Max
23 Ref	25	9	5
50 Ref	100		

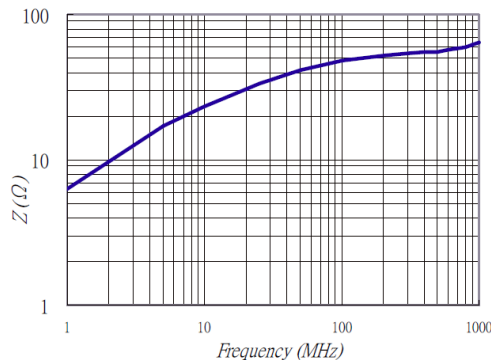
Test Conditions

Instrument: Agilent 4294A Precision Impedance Analyzer.

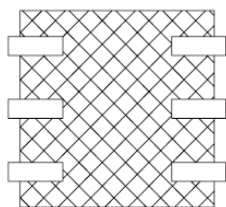
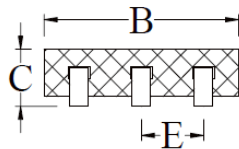
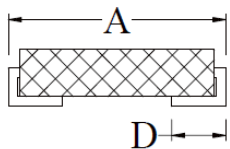
IDC: Based on temperature rise (ΔT : 40°C TYP.)

ELECTRICAL CHARACTERISTIC CURVE

Typical Impedance v.s. Frequency Curve

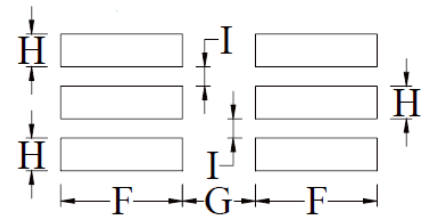


OUTLINE DIMENSIONS:



A	B Max	C	D	E
5.60±0.30	5.00	1.50±0.20	1.40±0.15	1.3±0.2

Recommended Land Pattern



F	G	H	I
3.00 ref.	1.8 ref.	0.80 ref.	0.47 ref.

Dimension: mm

ABRACON IS
ISO 9001:2008
CERTIFIED



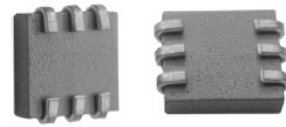
ABRACON
CORPORATION

Visit www.abracon.com for Terms & Conditions of Sale

Revised: 09.20.13

30332 Esperanza, Rancho Santa Margarita, California 92688
tel 949-546-8000 | fax 949-546-8001 | www.abracon.com

Surface Mount Ferrite Chip Beads Array

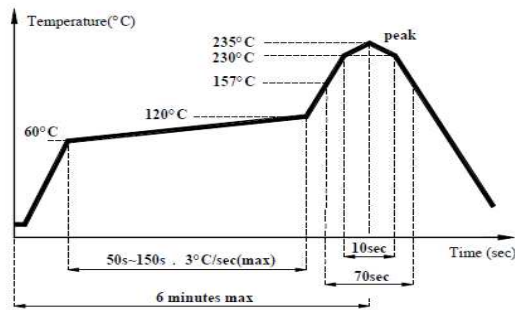


5.60 x 5.00 x 1.50mm

ACSB-04-T

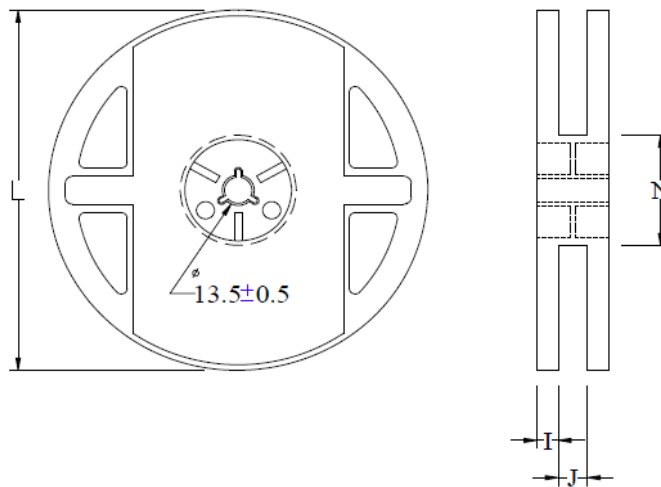
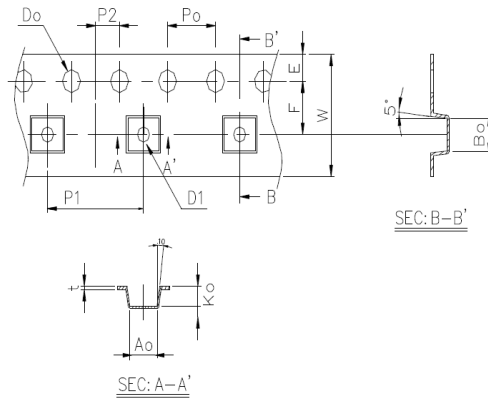
RoHS/RoHS II Compliant

REFLOW PROFILE:



TAPE & REEL:

Packing
T: 1000pcs / reel



A0	B0	K0	D0	D1	F	P1	W	t	L	I	J	N
4.7 ± 0.1	5.74 ± 0.1	1.82 ± 0.1	1.5 ± 0.1	1.5 ± 0.05	5.5 ± 0.05	8 ± 0.1	12 ± 0.2	0.25 ± 0.05	178	1.4	12	60

Dimension: mm

ATTENTION: Abracon Corporation's products are COTS – Commercial-Off-The-Shelf products; suitable for Commercial, Industrial and, where designated, Automotive Applications. Abracon's products are not specifically designed for Military, Aviation, Aerospace, Life-dependant Medical applications or any application requiring high reliability where component failure could result in loss of life and/or property. For applications requiring high reliability and/or presenting an extreme operating environment, written consent and authorization from Abracon Corporation is required. Please contact Abracon Corporation for more information.

ABRACON IS
ISO 9001:2008
CERTIFIED



Visit www.abracon.com for Terms & Conditions of Sale **Revised: 09.20.13**
30332 Esperanza, Rancho Santa Margarita, California 92688
tel 949-546-8000 | fax 949-546-8001 | www.abracon.com