



Chipsmall Limited consists of a professional team with an average of over 10 year of expertise in the distribution of electronic components. Based in Hongkong, we have already established firm and mutual-benefit business relationships with customers from,Europe,America and south Asia,supplying obsolete and hard-to-find components to meet their specific needs.

With the principle of “Quality Parts,Customers Priority,Honest Operation,and Considerate Service”,our business mainly focus on the distribution of electronic components. Line cards we deal with include Microchip,ALPS,ROHM,Xilinx,Pulse,ON,Everlight and Freescale. Main products comprise IC,Modules,Potentiometer,IC Socket,Relay,Connector.Our parts cover such applications as commercial,industrial, and automotives areas.

We are looking forward to setting up business relationship with you and hope to provide you with the best service and solution. Let us make a better world for our industry!



Contact us

Tel: +86-755-8981 8866 Fax: +86-755-8427 6832

Email & Skype: info@chipsmall.com Web: www.chipsmall.com

Address: A1208, Overseas Decoration Building, #122 Zhenhua RD., Futian, Shenzhen, China



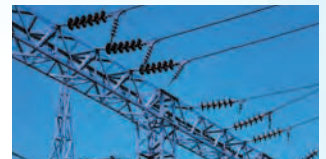
2014
SUMMER



<http://www.atop.com.tw>

Atop Technologies, Inc.

Gateway to Networks



Ethernet Switches

Serial Device Servers

Fieldbus Gateways

Wireless

Media Converters

Accessories



Serial Device Servers

Entry Level

Small Form Factor

IP30 Rated
IEC/EN60529

0°C 60°C



GW51C-MAXI-WDT 1-Port Serial Device Servers, DIN-Rail, Terminal Block & Mini-DIN(F)

SE5002(DB) 2-Port Serial Device Servers, Supporting RS232/422/485, DB9(M)



SE5002-S55is(TB) 2-Port Serial Device Servers, Terminal Block, 2KV Magnetic Isolation



Serial Device Servers

Advanced

Field Type Mounting

IP50 Rated
IEC/EN60529

0°C 60°C

Industrial
EMC



SE5001A 1-Port Serial Device Servers, Supporting RS232/422/485, DB9(M)

SE5001A-TB 1-Port Serial Device Servers, Supporting RS232/422/485, Terminal Block

DIN-Rail Type Mounting

IP50 Rated
IEC/EN60529

0°C 60°C

Industrial
EMC



SE5002D 2-Port Serial Device Servers with RJ-45, Supporting RS232/422/485, DB9(M)

SE5002D-TB 2-Port Serial Device Servers with RJ-45, Supporting RS232/422/485, Terminal Block

SE5002D-Fm 2-Port Serial Device Servers with Multimode Fiber Optic, Supporting RS232/422/485, DB9(M)

SE5002D-Fs 2-Port Serial Device Servers with Single-mode Fiber Optic, Supporting RS232/422/485, DB9(M)

SE5002D-TB-Fm 2-Port Serial Device Servers with Multimode Fiber Optic, Supporting RS232/422/485, Terminal Block

SE5002D-TB-Fs 2-Port Serial Device Servers with Single-mode Fiber Optic, Supporting RS232/422/485, Terminal Block

SE5002D-SFP 2-Port Serial Device Servers with SFP, Supporting RS232/422/485, DB9(M)

SE5002D-TB-SFP 2-Port Serial Device Servers with SFP, Supporting RS232/422/485, Terminal Block



1U Rack Mountable

IP30 Rated
IEC/EN60529

0°C 60°C

Industrial
EMC



SE5408A 8-Port Industrial Serial Device Servers, RJ-45, 2.5KV Isolation, AC 100-260V or DC 24-48V , Supporting RS232 or RS422/485

SE5416A 16-Port Industrial Serial Device Servers, RJ-45, 2.5KV Isolation, AC 100-260V or DC 24-48V , Supporting RS232 or RS422/485

SE5408A2-N 8-Port Industrial Serial Device Servers, RJ-45, AC 100-260V or DC 24-48V , Supporting RS232/422/485 Software Selectable

SE5416A2-N 16-Port Industrial Serial Device Servers, RJ-45, AC 100-260V or DC 24-48V , Supporting RS232/422/485 Software Selectable



Serial Device Servers

Harsh Environments

DIN-Rail

IP50 Rated
IEC/EN60529

-40-c 80-c



SE5404D	Industrial 4-Port Serial Device Servers, DIN-Rail, D-Sub(M)
SE5404D-TB	Industrial 4-Port Serial Device Servers, DIN-Rail, Terminal Block
SE5404D-Sis	Industrial 4-Port Serial Device Servers, DIN-Rail, Terminal Block, 2KV Isolation

Serial Device Servers

Industry-specific

IP68

IP68 Rated
IEC/EN60529

-40-c 75-c

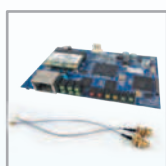


SE8502-M12	IP68 Rated 2-Port Serial Device Servers
SE8502-M12 (DIN-Rail)	IP68 Rated 2-Port Serial Device Servers with DIN-Rail Mounting Kit
SE8502-Sis-M12	IP68 Rated 2-Port Serial Device Server, 2KV Isolation
SE8502-Sis-M12 (DIN-Rail)	IP68 Rated 2-Port Serial Device Server, 2KV Isolation with DIN-Rail Mounting Kit

Serial Device Servers

Embedded Module

0-c 60-c



SW1501T	1-port Wireless IEEE 802.11 a/b/g/n Serial Device Server, Single Board, LDO=3.3V, 4 GPIO, no Atop STD Firmware, Antenna is not Included
SW1501	1-port Wireless IEEE 802.11 a/b/g/n Serial Device Server, Dual Boards, D-Sub(M), 9-48VDC, 4 GPIO, no Atop STD Firmware, Antenna is not Included



SW1502T	2-port Wireless IEEE 802.11 a/b/g/n Serial Device Server, Dual Boards, LDO=3.3V, 4 GPIO, no Atop STD Firmware, Antenna is not Included
SW1502	2-port Wireless IEEE 802.11 a/b/g/n Serial Device Server, Dual Boards, D-Sub(M), 9-48VDC, 4 GPIO, no Atop STD Firmware, Antenna is not Included



SW1501S	1-port Wireless IEEE 802.11 a/b/g/n Serial Device Server, Dual Boards, D-Sub(M), 9-48VDC, 4 GPIO, no Atop STD Firmware, Antenna is not Included
SW1501S SDK	Software Development Kit for 1-port Wireless IEEE 802.11 a/b/g/n Serial Device Server



Wireless

IEEE 802.11 a/b/g/n

Serial Device Servers

IP50 Rated
IEC/EN60529

-20°C 60°C



Industrial
EMC

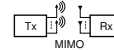


SW5501	Industrial Wireless 802.11 a/b/g/n Serial Device Server with 1-Serial Port, D-Sub(M)
SW5501-TB	Industrial Wireless 802.11 a/b/g/n Serial Device Server with 1-Serial Port, Terminal Block
SW5501-Sis	Industrial Wireless 802.11 a/b/g/n Serial Device Server with 1-Serial Port, Terminal Block, 2KV Isolation
SW5502	Industrial Wireless 802.11 a/b/g/n Serial Device Server with 2-Serial Port, D-Sub(M)
SW5502-TB	Industrial Wireless 802.11 a/b/g/n Serial Device Server with 2-Serial Port, Terminal Block
SW5502-Sis	Industrial Wireless 802.11 a/b/g/n Serial Device Server with 2-Serial Port, Terminal Block, 2KV Isolation

Access Point

IP50 Rated
IEC/EN60529

-20°C 60°C



Industrial
EMC



AW5500	Industrial IEEE 802.11 a/b/g/n Wireless AP/Bridge
--------	---

Wireless

IEEE 802.11 b/g/n

Serial Device Servers

IP50 Rated
IEC/EN60529

-20°C 60°C



SW5501C	Industrial Wireless 802.11 b/g/n Serial Device Server with 1-Serial Port, D-Sub(M) , or Terminal Block, Supporting Wi-Fi Direct
SW5502C	Industrial Wireless 802.11 b/g/n Serial Device Server with 2-Serial Port, D-Sub(M), Supporting Wi-Fi Direct
SW5502C-TB	Industrial Wireless 802.11 b/g/n Serial Device Server with 2-Serial Port, Terminal Block, Supporting Wi-Fi Direct

Access Point

IP50 Rated
IEC/EN60529

-20°C 60°C



AW5500C	Industrial IEEE 802.11 b/g/n Wireless AP/Bridge Supporting Wi-Fi Direct
---------	---

Wireless

3GPP Serial/Cellular Gateway

DIN-Rail

IP30 Rated
IEC/EN60529

-20°C 75°C



SC5902	2-Port Industrial Serial-Cellular Gateway
--------	---

Coming
Soon



Media Converters

Ethernet-to-Fiber

DIN-Rail

IP50 Rated
IEC/EN60529

-20°C 70°C



EF23-1-1Fm-SC-2	Industrial-grade Fast Ethernet-to-Fiber Media Converter, Multimode, SC Connector, 2 KM
EF23-1-1Fs-SC-30	Industrial-grade Fast Ethernet-to-Fiber Media Converter, Single-mode, SC Connector, 30 KM
EF23-1G-1Fm-SC-550M	Industrial-grade Gigabit Ethernet-to-Fiber Media Converter, Multimode, SC Connector, 550 M
EF23-1G-1Fs-SC-10	Industrial-grade Gigabit Ethernet-to-Fiber Media Converter, Single-mode, SC Connector, 10 KM
EF23-1G-1SFP	Industrial-grade Gigabit Fast Ethernet-to-Fiber Media Converter with SFP Capacity

Media Converters

Serial-to-Fiber

DIN-Rail

IP50 Rated
IEC/EN60529

-10°C 70°C



SF63-TB-DB-1Fm-SC-2	Industrial-grade Serial-to-Fiber Media Converter, Multimode, SC Connector, 2 KM
SF63-TB-DB-1Fs-SC-30	Industrial-grade Serial-to-Fiber Media Converter, Single-mode, SC Connector, 30 KM

Smart Media Converters

Ethernet-to-Fiber

DIN-Rail

IP30 Rated
IEC/EN60529

-20°C 70°C



EF24-1G-1Fm-SC-550M	Industrial-grade Smart Gigabit Ethernet-to-Fiber Media Converter, Multimode, SC Connector, 550 M
EF24-1G-1Fs-SC-10	Industrial-grade Smart Gigabit Ethernet-to-Fiber Media Converter, Single-mode, SC Connector, 10 KM
EF24-1G-1SFP	Industrial-grade Smart Gigabit Fast Ethernet-to-Fiber Media Converter with SFP Connector



Ethernet Switches Harsh Environments

DIN-Rail Unmanaged Ethernet Switch

IP50 Rated
IEC/EN60529

-40°C 80°C

EN50155
EN60121-4

MIL-STD

Relay



EH7310-G	10-Port Unmanaged Ethernet Switch with Gigabit Uplink Ports
EH7310-2Fm	10-Port Unmanaged Ethernet Switch with Multimode Fiber Optic Uplinks
EH7310-G-2Fm	10-Port Unmanaged Ethernet Switch with Multimode Fiber Optic Gigabit Uplinks
EH7310-2Fs	10-Port Unmanaged Ethernet Switch with Single-mode Fiber Optic Uplinks
EH7310-G-2Fs	10-Port Unmanaged Ethernet Switch with Single-mode Fiber Optic Gigabit Uplinks

DIN-Rail Managed Ethernet Switch

IP50 Rated
IEC/EN60529

-40°C 80°C

EN50155
EN60121-4

MIL-STD

Relay

Ring
Redundant



EH7510-G	10-Port Managed Ethernet Switch with Gigabit Uplink Ports
EH7510-2Fm	10-Port Managed Ethernet Switch with Multimode Fiber Optic Uplinks
EH7510-G-2Fm	10-Port Managed Ethernet Switch with Multimode Fiber Optic Gigabit Uplinks
EH7510-2Fs	10-Port Managed Ethernet Switch with Single-mode Fiber Optic Uplinks
EH7510-G-2Fs	10-Port Managed Ethernet Switch with Single-mode Fiber Optic Gigabit Uplinks

Ethernet Switches Entry Level

DIN-Rail Unmanaged Ethernet Switch, Plastic Housing

IP40 Rated
IEC/EN60529

0°C 60°C



EH2005-Fm	5-Port Unmanaged Fast Ethernet Switch with Multimode Fiber Optic, Plastic
EH2005-FS	5-Port Unmanaged Fast Ethernet Switch with Singal-mode Fiber Optic, Plastic
EH2006	6-Port Unmanaged Fast Ethernet Switch, Plastic

DIN-Rail Unmanaged Ethernet Switch

IP50 Rated
IEC/EN60529

-10°C 70°C



EH2305-1Fm	5-Port Unmanaged Fast Ethernet Switch with Multimode Fiber Optic
EH2305-1FS	5-Port Unmanaged Fast Ethernet Switch with Singal-mode Fiber Optic
EH2306	6-Port Unmanaged Fast Ethernet Switch
EH2308	8-Port Unmanaged Fast Ethernet Switch
EH2304-PR	4-Port Unmanaged Fast Ethernet Switch, Supporting PROFINET Applications
EH2308-PR	8-Port Unmanaged Fast Ethernet Switch, Supporting PROFINET Applications



DIN-Rail Unmanaged Gigabit Ethernet Switch

IP50 Rated
IEC/EN60529

-10°C 70°C



EHG2308	8-Port Unmanaged Gigabit Ethernet Switch
---------	--



Ethernet Switches Advanced

DIN-Rail Unmanaged Gigabit Ethernet Switch with PoE

IP50 Rated IEC/EN60529 -10°C 70°C



EHG6308-4PoE	8-Port Unmanaged Gigabit Ethernet Switch with Integrated Power over Ethernet (PoE)
EHG6308-4PoE-4SFP	8-Port Unmanaged Gigabit Ethernet Switch with Integrated Power over Ethernet (PoE) with 4-port SFP capacity

DIN-Rail Managed Ethernet Switch with PoE and PROFINET Enabled

IP50 Rated IEC/EN60529 -20°C 70°C Ring Redundant



EH7512-4G-4PoE-4SFP-PR	12-Port Managed Ethernet Switch with Integrated Power over Ethernet (PoE) and 4-port Gigabit Combo Uplink Ports, Supporting PROFINET Modes
EH7520-4G-4PoE-4SFP-PR	20-Port Managed Ethernet Switch with Integrated Power over Ethernet (PoE) and 4-port Gigabit Combo Uplink Ports, Supporting PROFINET Modes

DIN-Rail Managed Ethernet Switch with PoE

IP50 Rated IEC/EN60529 -20°C 70°C Ring Redundant



EH7512-4G-4PoE-4SFP	12-Port Managed Ethernet Switch with Integrated Power over Ethernet (PoE) and 4-port Gigabit Combo Uplink Ports
EH7520-4G-4PoE-4SFP	20-Port Managed Ethernet Switch with Integrated Power over Ethernet (PoE) and 4-port Gigabit Combo Uplink Ports

Fieldbus Gateways Modbus Gateways

Small Form Factor

IP30 Rated IEC/EN60529 0°C 60°C



MB5001C	1-Port Serial-to-Ethernet Modbus Gateway compact version, Terminal Block
MB5001C-Sis	1-Port Serial-to-Ethernet Modbus Gateway compact version, 2KV Isolation & 15KV ESD Protection

Mid-Sized, DIN-Rail

IP50 Rated IEC/EN60529 -40°C 80°C



MB5404D-X	4-Port Serial-to-Ethernet Intelligent Modbus Gateway, D-Sub(M)
MB5404D-Sis-X	4-Port Serial-to-Ethernet Intelligent Modbus Gateway, Terminal Block, 2KV Isolation

1U Rack Mountable

IP50 Rated IEC/EN60529 0°C 60°C Industrial EMC



MB5416A	16-Port Serial-to-Ethernet Intelligent Modbus Gateway, RJ-45, 2.5KV Isolation, AC 100-260V or DC 24-48V, Supporting RS232 or RS422/485
MB5408A	8-Port Serial-to-Ethernet Intelligent Modbus Gateway, RJ-45, 2.5KV Isolation, AC 100-260V or DC 24-48V, Supporting RS232 or RS422/485
MB5408A2-N	8-Port Serial-to-Ethernet Intelligent Modbus Gateway, RJ-45, AC 100-260V or DC 24-48V, Supporting RS232/422/485 Software Selectable
MB5416A2-N	16-Port Serial-to-Ethernet Intelligent Modbus Gateway, RJ-45, AC 100-260V or DC 24-48V, Supporting RS232/422/485 Software Selectable

Optional Accessories

Power Adaptor



US315-12(US-TB3)	3-pin Terminal Block (5.08 mm) Power Adaptor,100-240VAC Input, 1.25A @ 12VDC Output, US Plug
USE315-12(EU-TB3)	3-pin Terminal Block (5.08 mm) Power Adaptor,100-240VAC Input, 1.25A @ 12VDC Output, EU Plug
US315-12(US-Y)	Y-Type (BT1-10V) Power Adaptor,100-240VAC Input, 1.25A @ 12VDC Output, US Plug
USE315-12(EU-Y)	Y-Type (BT1-10V) Power Adaptor,100-240VAC Input, 1.25A @ 12VDC Output, EU Plug
UV315-12(US-LDC)	Lockable DC Jack (5.5/2.1/9.5 mm) Power Adaptor, 100-240VAC Input, 1.25A @ 12 VDC Output, US Plug
UVE315-12(EU-LDC)	Lockable DC Jack (5.5/2.1/9.5 mm) Power Adaptor, 100-240VAC Input, 1.25A @ 12 VDC Output, EU Plug
UN305-0510(US-DC)	DC Jack (3.5/1.35/7.5 mm) Power Adaptor, 100-240VAC Input, 1.0A @ 5 VDC Output, US Plug
UNE305-0510(EU-DC)	DC Jack (3.5/1.35/7.5 mm) Power Adaptor, 100-240VAC Input, 1.0A @ 5 VDC Output, EU Plug



DIN-Rail Power Supply



AD1024-24F	24W/1A DIN-Rail 24V DC Power Supply with Universal 100-240V AC / 120-370V DC Input
AD1048-24FS	48W/2A DIN-Rail 24V DC Power Supply with Universal 100-240V AC / 120-370V DC Input
AD1072-24F	72W/3A DIN-Rail 24V DC Power Supply with Universal 100-240V AC / 120-370V DC Input
AD1100-24F	100W/4A DIN-Rail 24V DC Power Supply with Universal 100-240V AC / 120-370V DC Input
AD1120-24F	120W/5A DIN-Rail 24V DC Power Supply with Universal 100-240V AC / 120-370 V DC Input
AD1120-48F	120W/2.5A DIN-Rail 48V DC Power Supply with Universal 100-240V AC / 120-370V DC Input
AD1240-48C	240W/5A DIN-Rail 48V DC Power Supply with Universal 100-240V AC / 120-370V DC Input

Antenna



ANT-WD-A-RF-0305	IEEE 802.11 a/b/g 2.4/5 GHz, Dual Band, Omni-directional Antenna, 3/5dBi, RP-SMA(F)
ANT-WS-AB-RM-05-180	IEEE 802.11 b/g 2.4 GHz, Single Band, Omni-directional Antenna, 5dBi, RP-SMA(M), with 180cm Cable, with Base
ANT-WS-AB-RM-05-200	IEEE 802.11 b/g 2.4 GHz, Single Band, Omni-directional Antenna, 5dBi, RP-SMA(M), with 200cm Cable, with Base.
ANT-WS-A-NF-09	IEEE 802.11 b/g 2.4~2.5 GHz, Single Band, Omni-directional Antenna, 9dBi, N-type(F)

Transceiver



LM38-A3S-TI-N	SFP Transceiver, 155Mbps, 1310nmLED, Multi-mode, 2km, 3.3V, -40°C ~ 85°C
LS38-A3S-TI-N	SFP Transceiver, 155Mbps, 1310nmFP, Single-mode, 30km, 3.3V, -40°C ~ 85°C
LM28-C3S-TI-N	SFP Transceiver, 1250Mbps, 850nmVCSEL, Multi-mode, 550m, 3.3V, -20°C ~ 85°C
LM38-C3S-TI-N	SFP Transceiver, 1250Mbps, 1310nmFP, Multi-mode, 2km, 3.3V, -40°C ~ 85°C
LS38-C3S-TI-N	SFP Transceiver, 1250Mbps, 1310nmFP, Single-mode, 10km, 3.3V, -40°C ~ 85°C
LS38-C3L-TI-N	SFP Transceiver, 1250Mbps, 1310nmDFB, Single-mode, 30km, 3.3V, -40°C ~ 85°C