



Chipsmall Limited consists of a professional team with an average of over 10 year of expertise in the distribution of electronic components. Based in Hongkong, we have already established firm and mutual-benefit business relationships with customers from,Europe,America and south Asia,supplying obsolete and hard-to-find components to meet their specific needs.

With the principle of "Quality Parts,Customers Priority,Honest Operation,and Considerate Service",our business mainly focus on the distribution of electronic components. Line cards we deal with include Microchip,ALPS,ROHM,Xilinx,Pulse,ON,Everlight and Freescale. Main products comprise IC,Modules,Potentiometer,IC Socket,Relay,Connector.Our parts cover such applications as commercial,industrial, and automotives areas.

We are looking forward to setting up business relationship with you and hope to provide you with the best service and solution. Let us make a better world for our industry!



Contact us

Tel: +86-755-8981 8866 Fax: +86-755-8427 6832

Email & Skype: info@chipsmall.com Web: www.chipsmall.com

Address: A1208, Overseas Decoration Building, #122 Zhenhua RD., Futian, Shenzhen, China



1

2

3

4

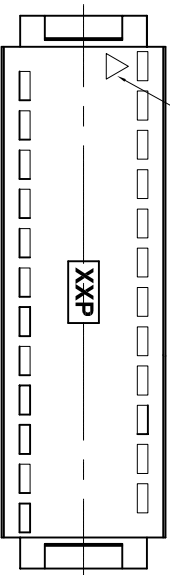
5

6

7

A

PIN 1 MARK

**NOTES:****MATERIAL**

1. Insulator Material: PBT+30%GF(UL94V-0), Black

2. Contact Material : Brass

3. Contact Plating : Gold Flash Over Ni

ELECTRICAL

① 1. Current Rating : 3.0AMP

① 2. Withstand Voltage : 1000V AC/DC

3. Contact Resistance : 20mΩ max

4. Insulation Resistance: 1000MΩ min

ENVIRONMENTAL

① 1. Operation Temperature: -40°C to +105°C

① 2. Packing : Tray

A

A

B

B

C

C

D

D

E

E

F

F

G

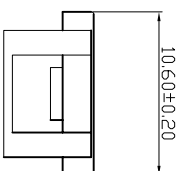
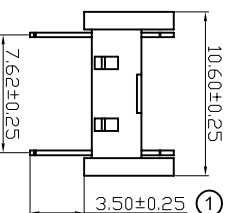
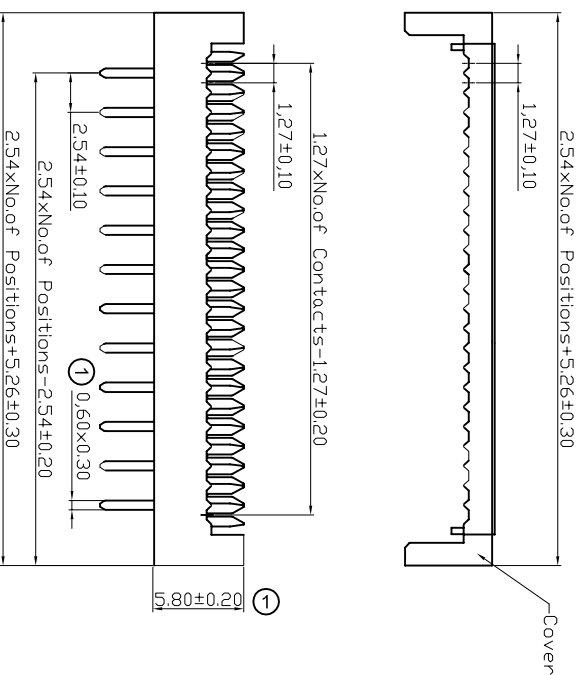
G

H

H

RoHS Compliant

Unit:mm



- ① 1. Current Rating : 3.0AMP
 ① 2. Withstand Voltage : 1000V AC/DC
 3. Contact Resistance : 20mΩ max
 4. Insulation Resistance: 1000MΩ min
- ENVIRONMENTAL**
 ① 1. Operation Temperature: -40°C to +105°C
 ① 2. Packing : Tray

Scale	Free						
TOLERANCE							
X.X	±0.40				Drawn	Date	Name
X.XX	±0.25				Approved	19.12.2013	Winnie
X.XXX	±0.15	②	Change the P/N				
Angle	±3°	①	Update			30.05.2013	Winnie
		①	Drawn			28.10.2011	Chappell
			Id.	Modification			

Customer-No.

ASSMANN WSW-No.

② ADIPxx-G-LC

Drawing-No.

ASS 5734 CO rev02

Replace

Sheet

 WSW/ components

1

2

3

4

5

6

7