



Chipsmall Limited consists of a professional team with an average of over 10 year of expertise in the distribution of electronic components. Based in Hongkong, we have already established firm and mutual-benefit business relationships with customers from,Europe,America and south Asia,supplying obsolete and hard-to-find components to meet their specific needs.

With the principle of “Quality Parts,Customers Priority,Honest Operation,and Considerate Service”,our business mainly focus on the distribution of electronic components. Line cards we deal with include Microchip,ALPS,ROHM,Xilinx,Pulse,ON,Everlight and Freescale. Main products comprise IC,Modules,Potentiometer,IC Socket,Relay,Connector.Our parts cover such applications as commercial,industrial, and automotives areas.

We are looking forward to setting up business relationship with you and hope to provide you with the best service and solution. Let us make a better world for our industry!



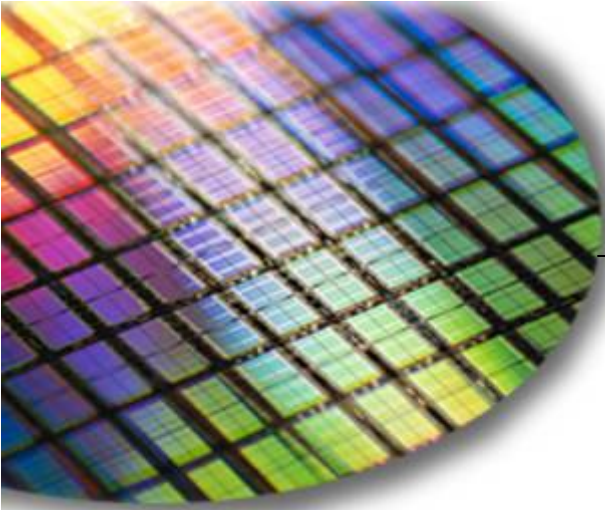
Contact us

Tel: +86-755-8981 8866 Fax: +86-755-8427 6832

Email & Skype: info@chipsmall.com Web: www.chipsmall.com

Address: A1208, Overseas Decoration Building, #122 Zhenhua RD., Futian, Shenzhen, China





The World Leader in High Performance Signal Processing Solutions



iSensor®

ADIS16210 Evaluation Tool Ordering Guide



Mark Looney
iSensor Applications Engineer
May 2011



iSensor® The Simple Solution for Sensor Integration

ADIS16210 Evaluation Tool Ordering Guide

Prototyping with embedded processor systems:

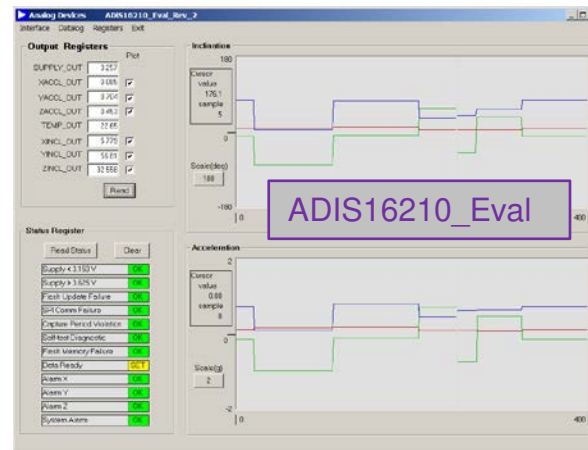
1. Order part number: [ADIS16210/PCBZ](#):
 - ◆ ADIS16210CMLZ, interface PCB, machine screws

PC-based demonstration and evaluation

1. Order part numbers: [ADIS16210/PCBZ](#), [ADISUSBZ](#)
2. ADISUSBZ includes:
 - ◆ USB interface PCB, A-to-B USB cable
3. ADIS16210 Demo/Evaluation software package:
 - ◆ Download from www.analog.com/ADIS16210, using the “Evaluation Boards & Kits” link
 - ◆ Demonstration mode with real-time waveforms
 - ◆ Register access mode for configuration
 - ◆ Data-log mode for prototype algorithm development
4. Windows XP compatible
5. No software development kit (SDK) available

Documentation:

1. For ADIS16210/PCB documentation, software installation guide, and software tips, go to:
 - ◆ www.analog.com/ADIS16210
 - ◆ Click on “Evaluation Boards & Kits”





◆ **Contacts:**

● **Applications Engineer:**

Mark Looney
mark.looney@analog.com
1-336-605-4139

● **Marketing:**

Bob Scannell
bob.scannell@analog.com
1-336-605-4031

More Information on *i*Sensor Evaluation Tools:

● **www.analog.com/isensor-evaluation**