



Chipsmall Limited consists of a professional team with an average of over 10 year of expertise in the distribution of electronic components. Based in Hongkong, we have already established firm and mutual-benefit business relationships with customers from,Europe,America and south Asia,supplying obsolete and hard-to-find components to meet their specific needs.

With the principle of “Quality Parts,Customers Priority,Honest Operation,and Considerate Service”,our business mainly focus on the distribution of electronic components. Line cards we deal with include Microchip,ALPS,ROHM,Xilinx,Pulse,ON,Everlight and Freescale. Main products comprise IC,Modules,Potentiometer,IC Socket,Relay,Connector.Our parts cover such applications as commercial,industrial, and automotives areas.

We are looking forward to setting up business relationship with you and hope to provide you with the best service and solution. Let us make a better world for our industry!



## Contact us

Tel: +86-755-8981 8866 Fax: +86-755-8427 6832

Email & Skype: info@chipsmall.com Web: www.chipsmall.com

Address: A1208, Overseas Decoration Building, #122 Zhenhua RD., Futian, Shenzhen, China



## ADIS16COM1/PCBZ Breakout Board Wiki Guide OVERVIEW

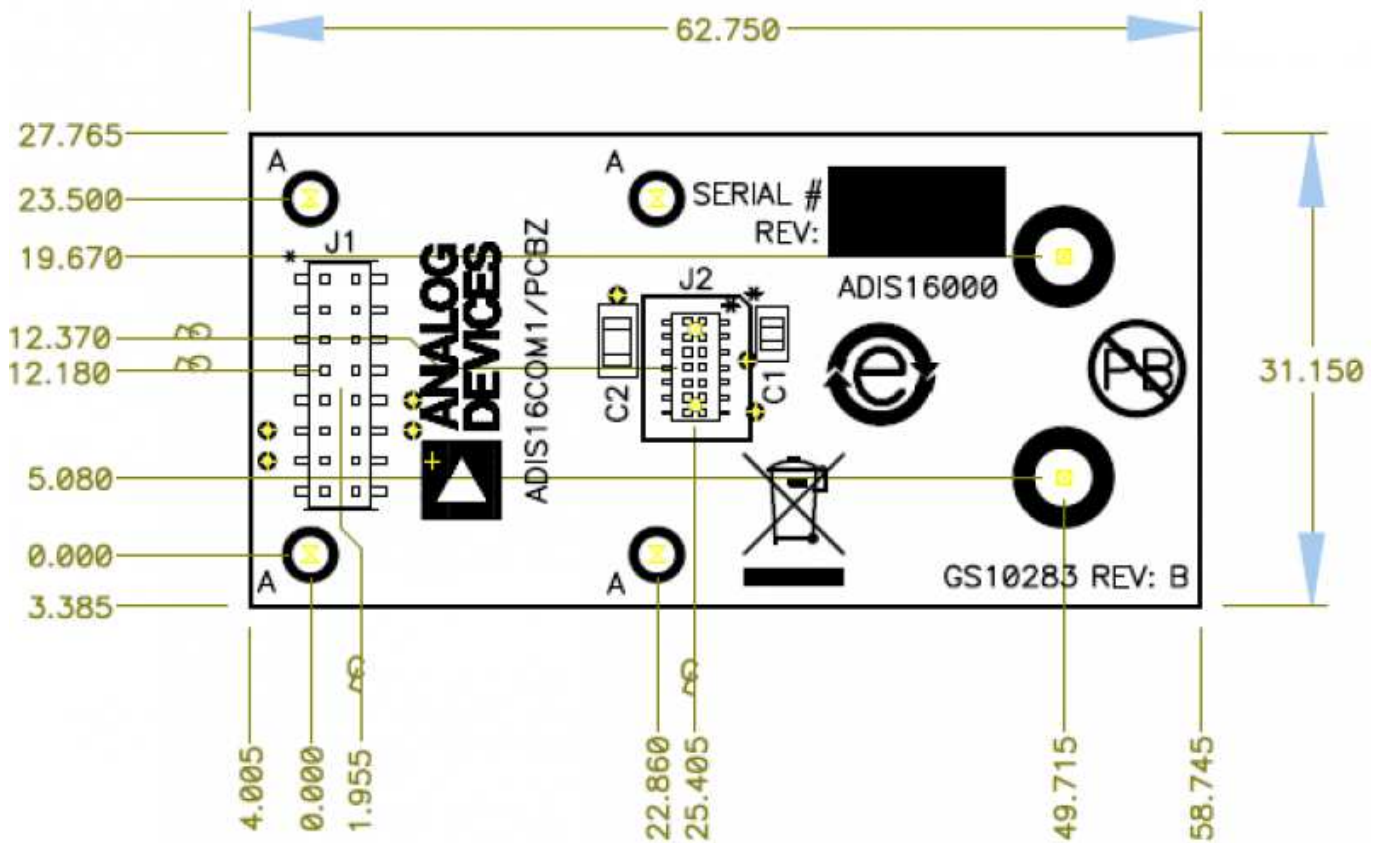
The ADIS16COM1/PCBZ provides a breakout function for the ADIS16000CMLZ, which pairs with the ADIS16229AMLZ to provide the sensor, signal processing and transceiver function for a wireless vibration sensing system.

Here is a picture of the contents that come with the ADIS16COM1/PCBZ.



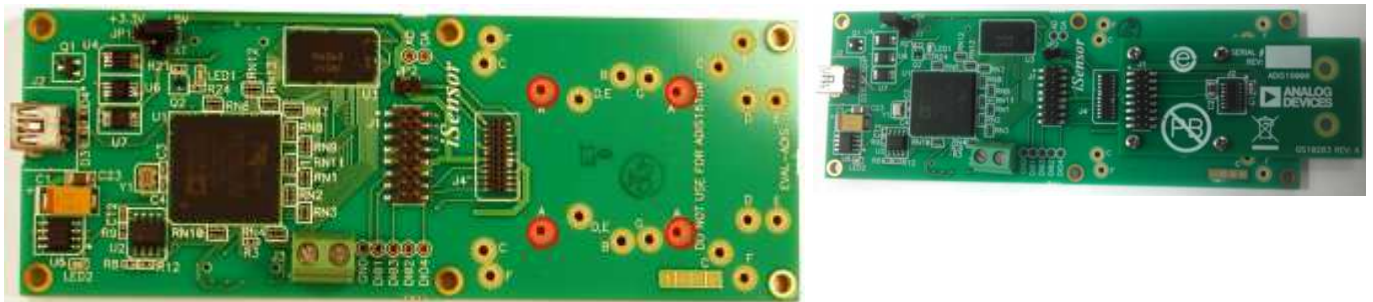
### ADIS16COM1/PCBZ MOUNTING HOLES

The ADIS16COM1/PCBZ provides 4 mounting holes that line up with mounting “A” Labeled holes on the [EVAL-ADIS](#) and supports the following products: [ADIS16000AMLZ](#) [ADIS16229AMLZ](#) products. Please see the following picture for device mounting hole locations.



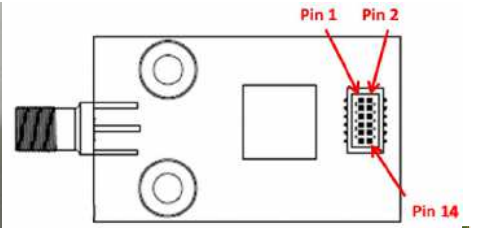
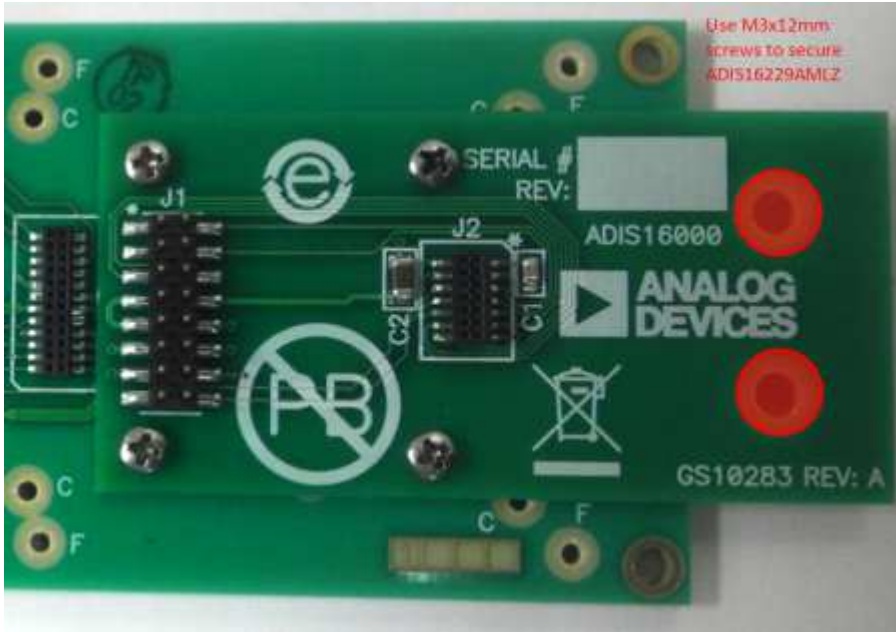
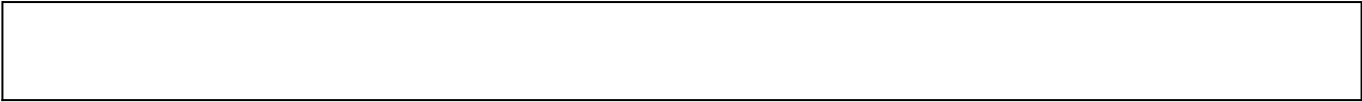
### EVAL-ADIS Mounting

Use the M2x0.4x6mm machine screws (provided in pink bag ANALOGKIT2) for mounting the ADIS16COM1/PCBZ to the [EVAL-ADIS](#) and set their torque for 20 inch-ounces. The red-highlights in the top-view picture illustrate the location of the mounting holes.

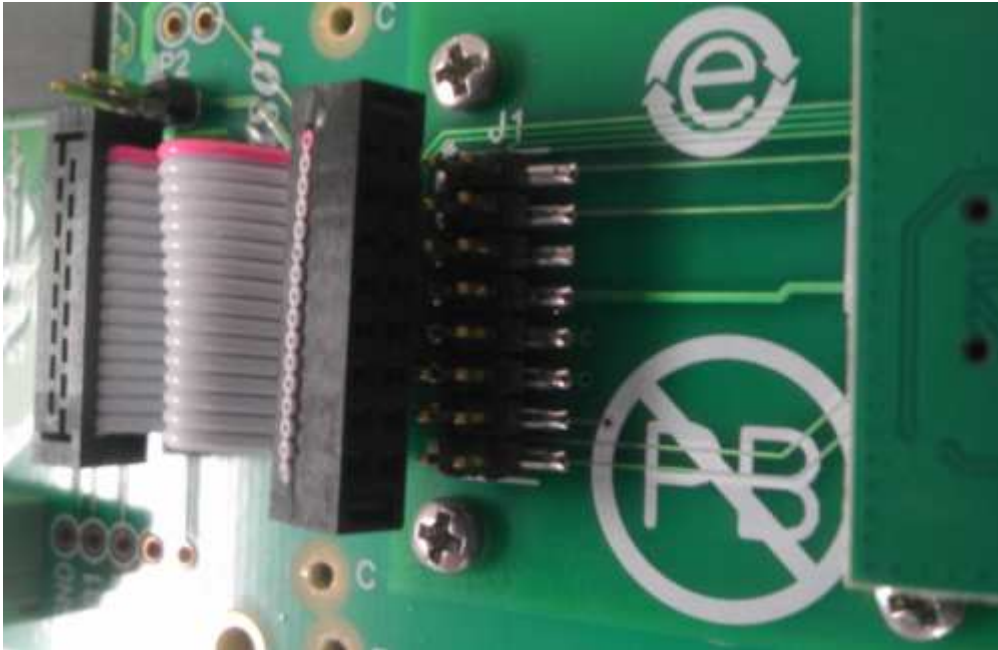


### ADIS16000 Mounting on ADIS16COM1/PCBZ

Use the M3x0.5x12mm machine screws and M3x.5x Hex nuts with the M3 washers optional(provided in pink bag ANALOGKIT2) for mounting [ADIS16000AMLZ](#) product to the ADIS16COM1/PCBZ and set their torque for 20 inch-ounces. The red-highlights in the top-view picture illustrate the location of the mounting holes for these products. Attach the 16 pin ribbon cable included with the [EVAL-ADIS](#) to connect the J1 connectors. For high-vibration environments, consider using more than 2 screws, per [AN-1045](#)



**WARNING:** Make sure that the connector pins are in alignment with J1 on the EVAL-ADIS and J1 on the ADIS16COM1/PCBZ, before pressing it into place.



Here is a close-up view, which shows a few slides of the **correct connector alignment** .





© Analog Devices, Inc. All rights reserved. Trademarks and registered trademarks are the property of their respective owners.



[www.analog.com](http://www.analog.com)