



Chipsmall Limited consists of a professional team with an average of over 10 year of expertise in the distribution of electronic components. Based in Hongkong, we have already established firm and mutual-benefit business relationships with customers from,Europe,America and south Asia,supplying obsolete and hard-to-find components to meet their specific needs.

With the principle of “Quality Parts,Customers Priority,Honest Operation,and Considerate Service”,our business mainly focus on the distribution of electronic components. Line cards we deal with include Microchip,ALPS,ROHM,Xilinx,Pulse,ON,Everlight and Freescale. Main products comprise IC,Modules,Potentiometer,IC Socket,Relay,Connector.Our parts cover such applications as commercial,industrial, and automotives areas.

We are looking forward to setting up business relationship with you and hope to provide you with the best service and solution. Let us make a better world for our industry!



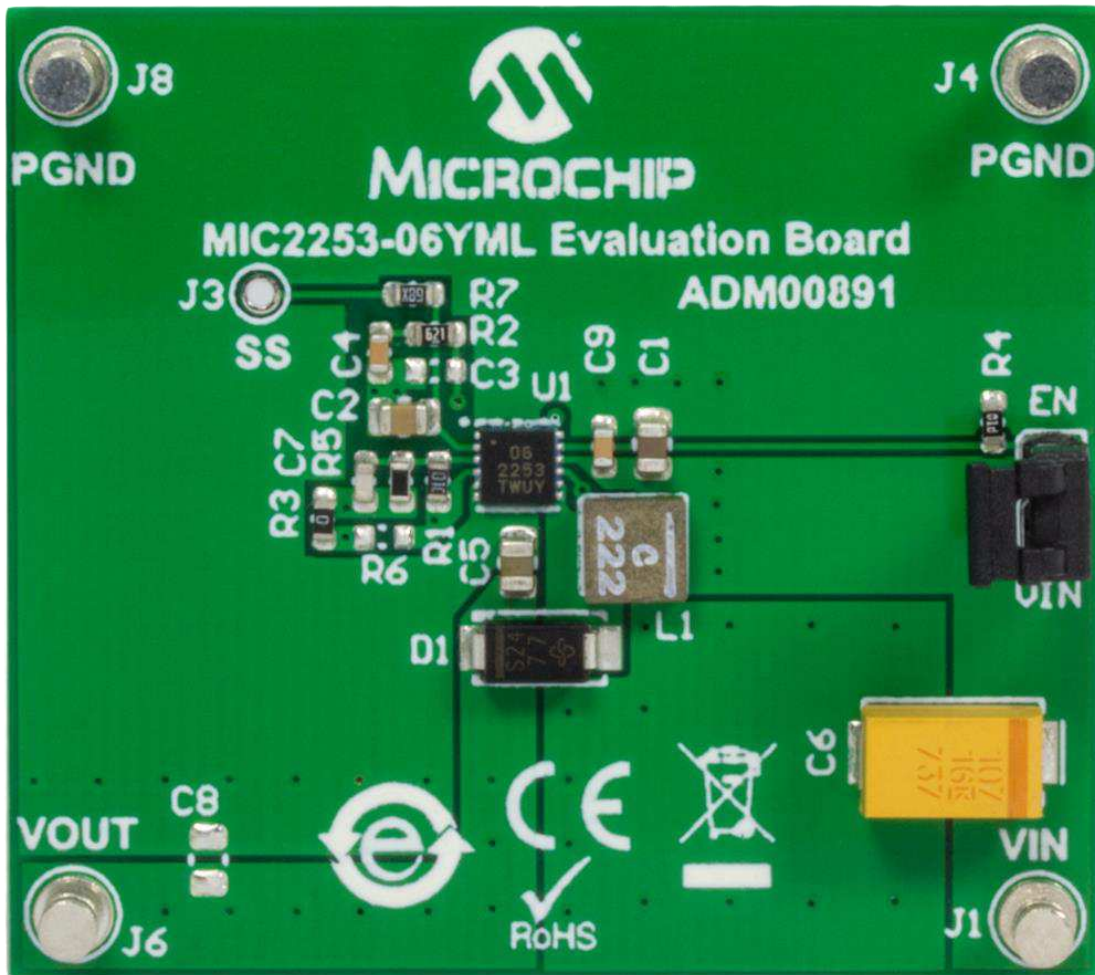
## Contact us

Tel: +86-755-8981 8866 Fax: +86-755-8427 6832

Email & Skype: info@chipsmall.com Web: www.chipsmall.com

Address: A1208, Overseas Decoration Building, #122 Zhenhua RD., Futian, Shenzhen, China





## MIC2253 3.5A 1MHz Boost Reg Eval Board

Part Number: ADM00891

MIC2253 Evaluation Board was developed to evaluate the capabilities of the MIC2253 high-efficiency 3.5A switch current limit integrated switch, non-synchronous boost (step-up) regulator. The MIC2253 achieves over 90% efficiency while still switching at 1MHz over a broad load range.





## Features

2.5V to 10V input volatage range;  
Fixed 1MHz switching frequency;  
1.245V +/- 3% feedback voltage;  
Output voltage up to 30V (max);  
Externally programmable soft-start;  
<1% line regulation;  
<0.1µA shutdown current;  
Over temperature protection;  
Under-voltage lockout (UVLO);

## Package Contents

1x MIC2253 3.5A 1MHz Boost Reg Eval Board

## Documents

|  |
|--|
| MIC2253 3.5A 1MHz Boost Reg Eval Board (ADM00891) BOM            |
| MIC2253 3.5A 1MHz Boost Reg Eval Board (ADM00891) Schematic  |
| MIC2253 3.5A 1MHz Boost Reg Eval Board (ADM00891) Gerber Files  |
| MIC2253 - 3.5A 1MHz High Efficiency Boost Regulator with OVP and Softstart   |