



Chipsmall Limited consists of a professional team with an average of over 10 year of expertise in the distribution of electronic components. Based in Hongkong, we have already established firm and mutual-benefit business relationships with customers from,Europe,America and south Asia,supplying obsolete and hard-to-find components to meet their specific needs.

With the principle of “Quality Parts,Customers Priority,Honest Operation,and Considerate Service”,our business mainly focus on the distribution of electronic components. Line cards we deal with include Microchip,ALPS,ROHM,Xilinx,Pulse,ON,Everlight and Freescale. Main products comprise IC,Modules,Potentiometer,IC Socket,Relay,Connector.Our parts cover such applications as commercial,industrial, and automotives areas.

We are looking forward to setting up business relationship with you and hope to provide you with the best service and solution. Let us make a better world for our industry!



Contact us

Tel: +86-755-8981 8866 Fax: +86-755-8427 6832

Email & Skype: info@chipsmall.com Web: www.chipsmall.com

Address: A1208, Overseas Decoration Building, #122 Zhenhua RD., Futian, Shenzhen, China

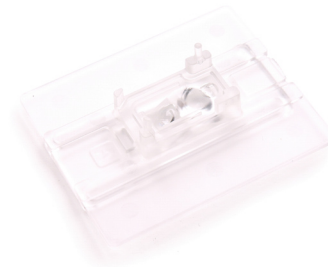


ADNS-6180-002

Laser Mouse wide trim Lens



Data Sheet



Description

The ADNS-6180-002 laser mouse wide trim lens is designed for use with Avago Technologies ADNS-7700 one chip USB LaserStream™ sensors. Together with the integrated VCSEL in the same package, the ADNS-6180-002 wide trim lens provides the directed illumination and optical imaging necessary for proper operation of the sensor. ADNS-6180-002 wide trim lens is a precision molded optical component and should be handled with care to avoid scratching and contamination of the optical surfaces.

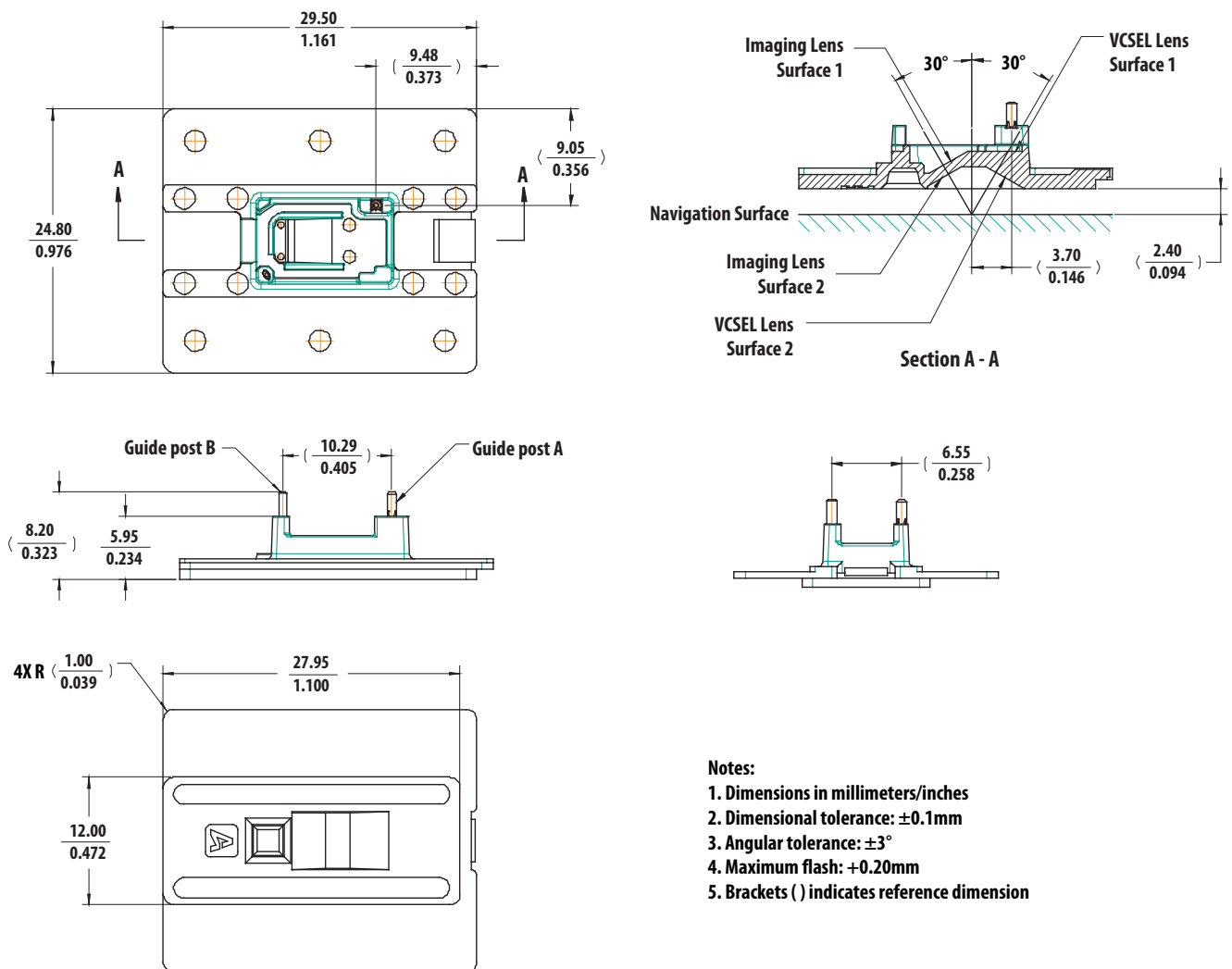


Figure 1. ADNS-6180-002 wide trim lens outline drawings and details

Mechanical Assembly Requirements

All specifications reference Figure 2, Optical System Assembly Diagram

Parameters	Symbol	Min.	Typ.	Max.	Unit	Conditions
Distance from Object Surface to Lens Reference Plane	A	2.18	2.40	2.62	mm	When use with ADNS-7700
Distance from Object Surface to Sensor Reference Plane	B		7.40		mm	Sensor Aperture must be in contact with lens housing surface

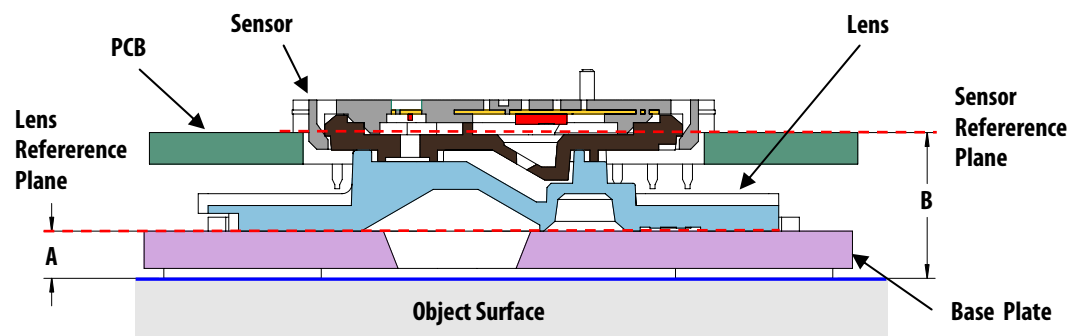


Figure 2. Optical system assembly cross-section diagram

Lens Design Optical Performance Specifications

All specifications are based on the Mechanical Assembly Requirements.

Parameters	Symbol	Min.	Typ.	Max.	Unit	Conditions
Design Wavelength	λ		842		nm	
Lens Material* Index of Refraction	N	1.5693	1.5713	1.5735		$\lambda = 842 \text{ nm}$

*Lens material is polycarbonate. Cyanoacrylate based adhesives should not be used as they will cause lens material deformation.

Mounting Instructions for the ADNS-6180-002 Laser Mouse Wide trim Lens to the Base Plate

The STEP or IGES format drawing file with design specifications for laser mouse base plate features and lens are available. These features are useful in maintaining proper positioning and alignment of the ADNS-6180-002 wide trim lens when used with the ADNS-7700 USB LaserStream sensors. These file can be obtained by downloading from Avago technologies website or by contacting your local Avago Technologies sales representative.

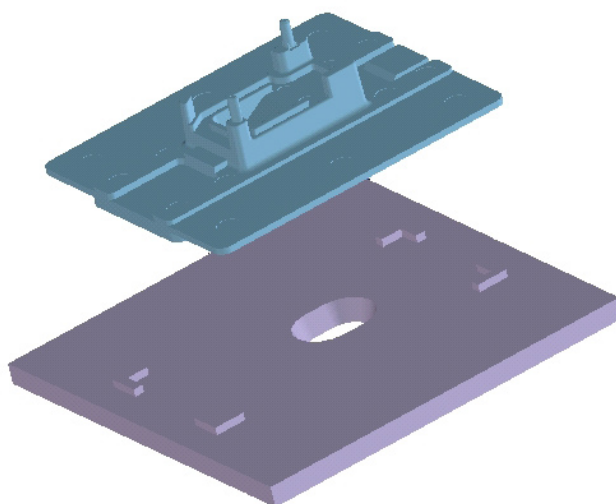


Figure 3. Illustration of base plate mounting features for ADNS-6180-002 laser mouse wide trim lens

For product information and a complete list of distributors, please go to our web site: www.avagotech.com

Avago, Avago Technologies, and the A logo are trademarks of Avago Technologies in the United States and other countries. Data subject to change. Copyright © 2005-2009 Avago Technologies. All rights reserved. AV02-1889EN - May 8, 2009

AVAGO
TECHNOLOGIES