



Chipsmall Limited consists of a professional team with an average of over 10 year of expertise in the distribution of electronic components. Based in Hongkong, we have already established firm and mutual-benefit business relationships with customers from,Europe,America and south Asia,supplying obsolete and hard-to-find components to meet their specific needs.

With the principle of “Quality Parts,Customers Priority,Honest Operation,and Considerate Service”,our business mainly focus on the distribution of electronic components. Line cards we deal with include Microchip,ALPS,ROHM,Xilinx,Pulse,ON,Everlight and Freescale. Main products comprise IC,Modules,Potentiometer,IC Socket,Relay,Connector.Our parts cover such applications as commercial,industrial, and automotives areas.

We are looking forward to setting up business relationship with you and hope to provide you with the best service and solution. Let us make a better world for our industry!



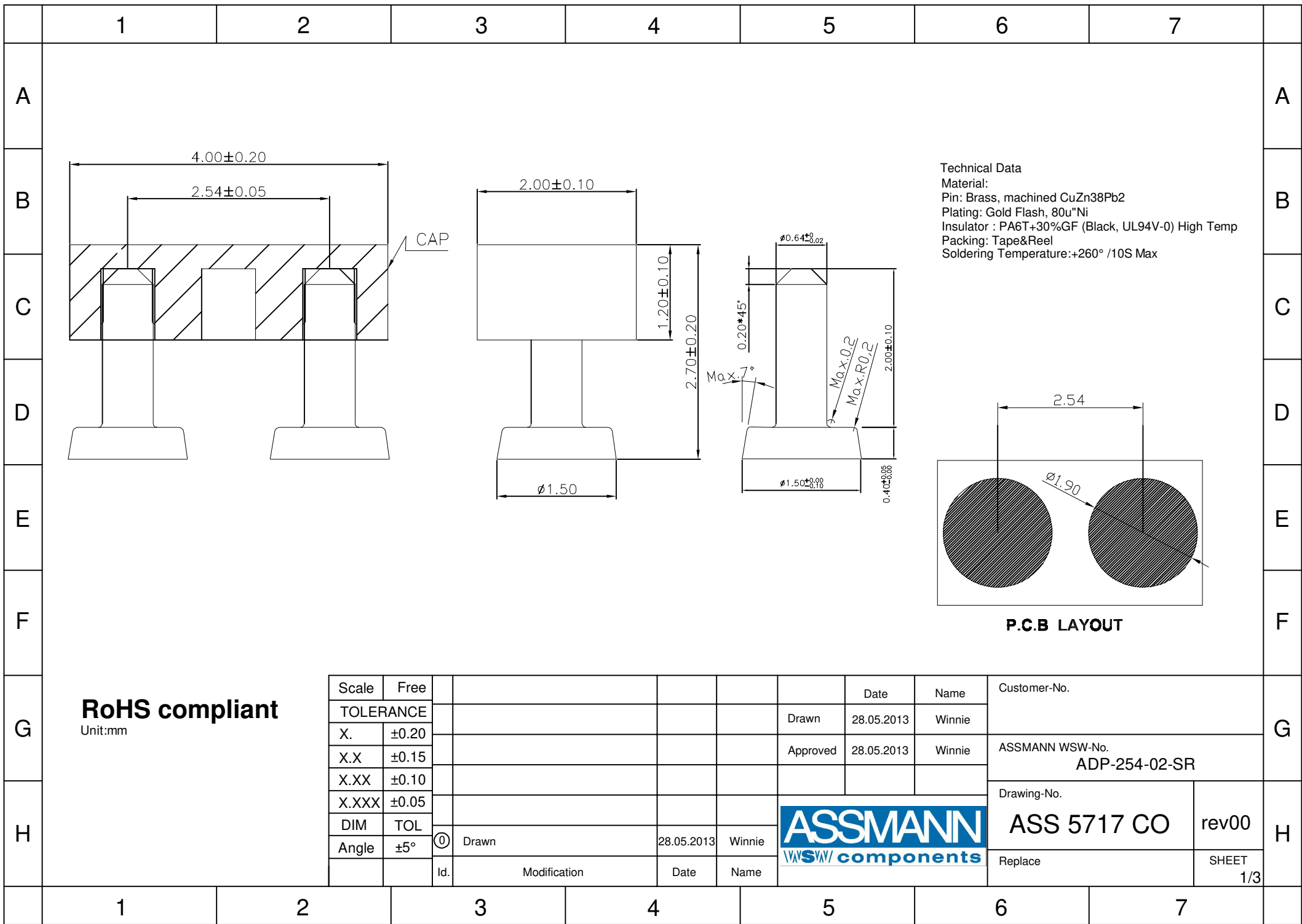
Contact us

Tel: +86-755-8981 8866 Fax: +86-755-8427 6832

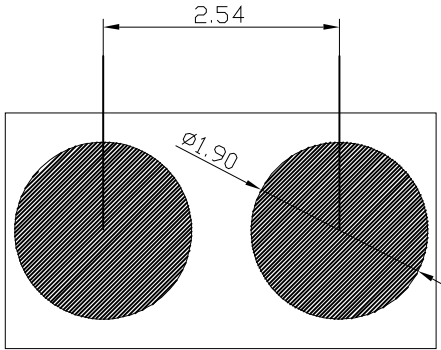
Email & Skype: info@chipsmall.com Web: www.chipsmall.com

Address: A1208, Overseas Decoration Building, #122 Zhenhua RD., Futian, Shenzhen, China





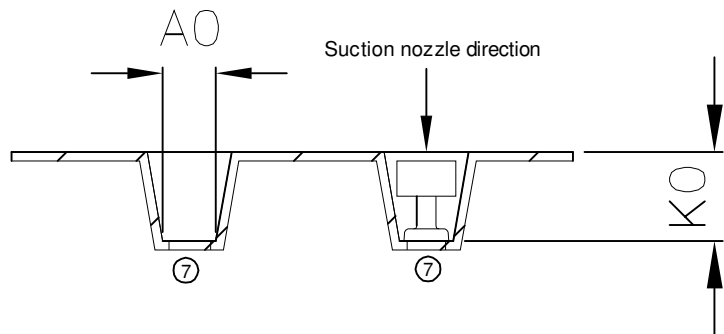
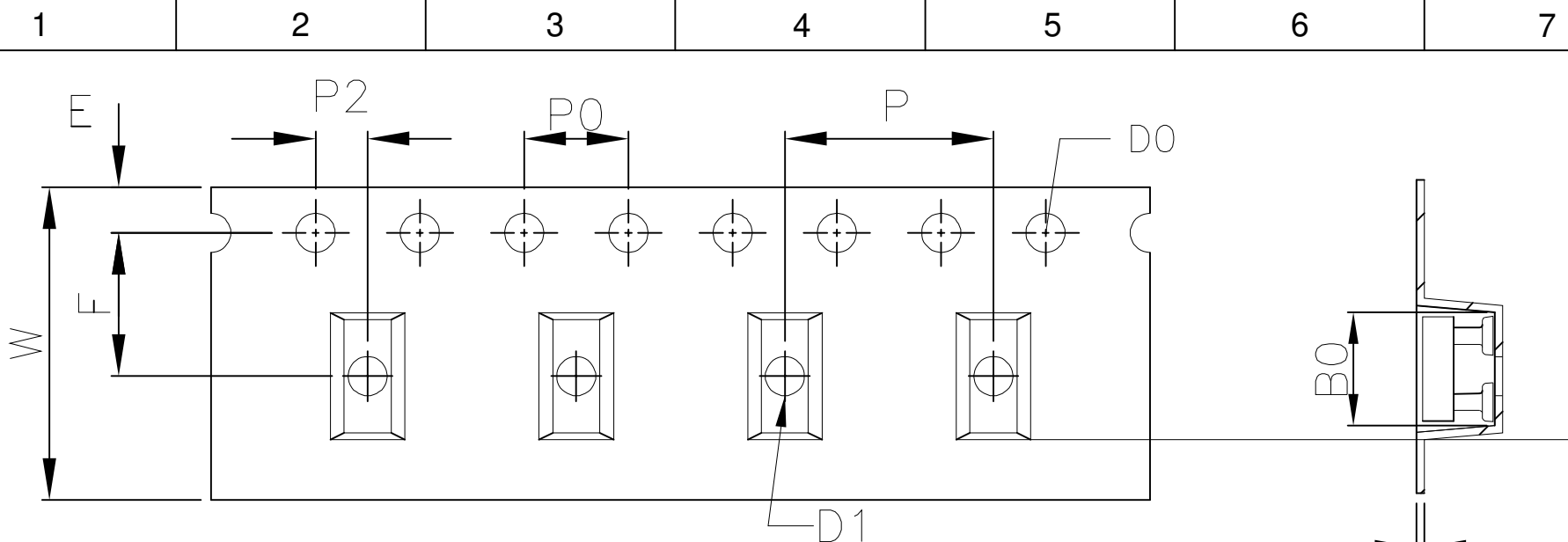
Technical Data
 Material:
 Pin: Brass, machined CuZn38Pb2
 Plating: Gold Flash, 80u"Ni
 Insulator : PA6T+30%GF (Black, UL94V-0) High Temp
 Packing: Tape&Reel
 Soldering Temperature: +260° /10S Max



P.C.B LAYOUT

RoHS compliant
 Unit:mm

Scale	Free					Date	Name	Customer-No.
TOLERANCE					Drawn	28.05.2013	Winnie	
X.	±0.20				Approved	28.05.2013	Winnie	ASSMANN WSW-No. ADP-254-02-SR
X.X	±0.15							
X.XX	±0.10							
X.XXX	±0.05							
DIM	TOL							Drawing-No. ASS 5717 CO
Angle	±5°	①	Drawn	28.05.2013				Winnie
		Id.	Modification	Date	Name			SHEET 1/3



1. For 10 Sprocket hole pitches, cumulative tolerance is $\pm 0,20\text{mm}$ on tape.
2. Carrier chamber not to exceed 1mm in 250mm.
3. All dimension meet EIA-481-D requirements
4. Material: black Conductive Polystyrene Alloy.
5. Packing length per 13" reel: 20.6 Meters.
6. Component load per 13" reel: 2500 pcs.
7. Beginning 38pcs empty chambers = 300mm, behind 30pcs empty

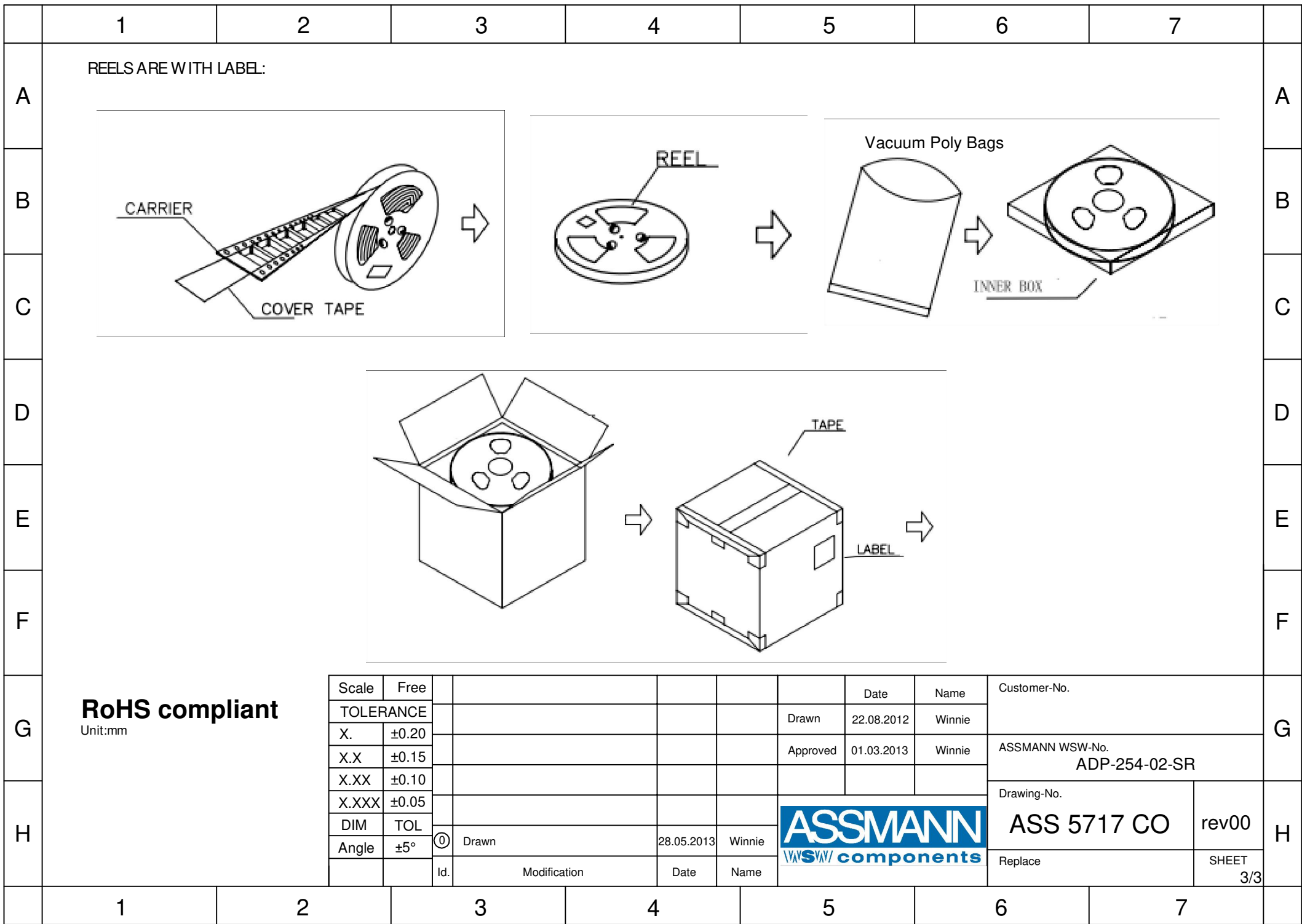
W	12.00 ± 0.30	P	8.00 ± 0.10	A0	1.80 ± 0.10	B0	4.34 ± 0.10
S0		P0	4.00 ± 0.10	A1		B1	
E	1.75 ± 0.10	P2	2.00 ± 0.10				
F	5.50 ± 0.10	D0	$\phi 1.50 \pm 0.10$	K0	3.00 ± 0.10		
T	0.30 ± 0.05	D1	$\phi 1.50$ Min	K1			

RoHS compliant
Unit:mm

Scale	Free						Date	Name	Customer-No.
TOLERANCE							Drawn	28.05.2013	Winnie
X.	± 0.20						Approved	28.05.2013	Winnie
X.X	± 0.15								ASSMANN WSW-No. ADP-254-02-SR
X.XX	± 0.10								Drawing-No.
X.XXX	± 0.05								ASS 5717 CO
DIM	TOL	①	Drawn	28.05.2013	Winnie			rev00	
Angle	$\pm 5^\circ$	Id.	Modification	Date	Name			Replace	SHEET 2/3



ASS 5717 CO
rev00
SHEET 2/3



RoHS compliant

Unit:mm

Scale	Free					Date	Name	Customer-No.
TOLERANCE						Drawn	22.08.2012	Winnie
X.	±0.20					Approved	01.03.2013	Winnie
X.X	±0.15							ASSMANN WSW-No. ADP-254-02-SR
X.XX	±0.10							Drawing-No.
X.XXX	±0.05							ASS 5717 CO
DIM	TOL	①	Drawn	28.05.2013	Winnie			rev00
Angle	±5°		Id.	Modification	Date			Name