



Chipsmall Limited consists of a professional team with an average of over 10 year of expertise in the distribution of electronic components. Based in Hongkong, we have already established firm and mutual-benefit business relationships with customers from,Europe,America and south Asia,supplying obsolete and hard-to-find components to meet their specific needs.

With the principle of “Quality Parts,Customers Priority,Honest Operation,and Considerate Service”,our business mainly focus on the distribution of electronic components. Line cards we deal with include Microchip,ALPS,ROHM,Xilinx,Pulse,ON,Everlight and Freescale. Main products comprise IC,Modules,Potentiometer,IC Socket,Relay,Connector.Our parts cover such applications as commercial,industrial, and automotives areas.

We are looking forward to setting up business relationship with you and hope to provide you with the best service and solution. Let us make a better world for our industry!



Contact us

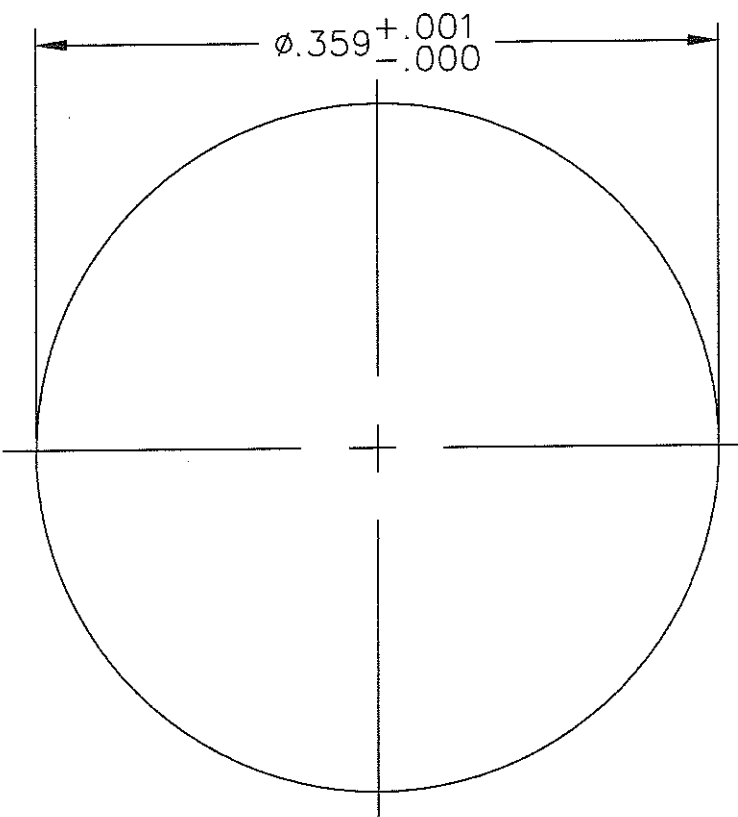
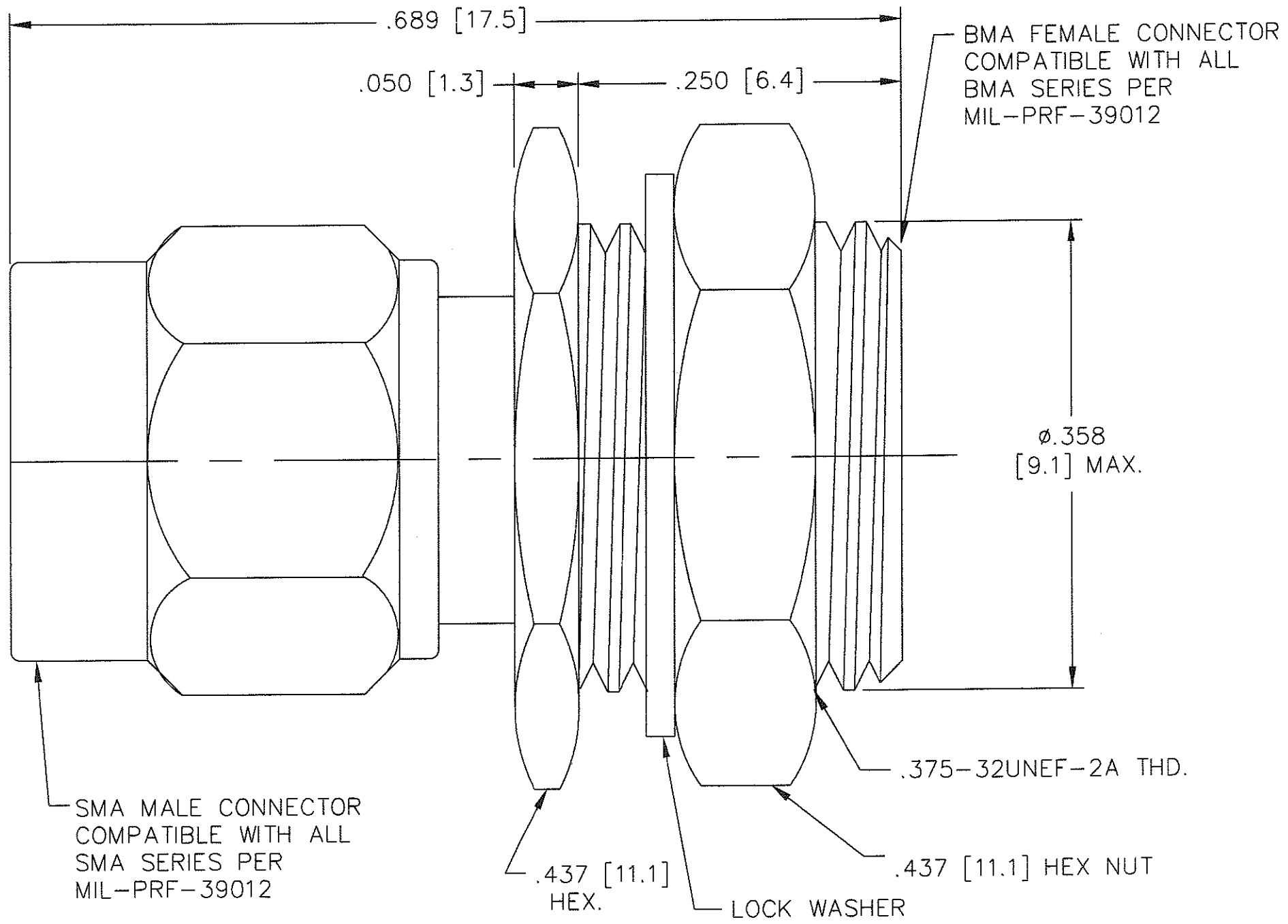
Tel: +86-755-8981 8866 Fax: +86-755-8427 6832

Email & Skype: info@chipsmall.com Web: www.chipsmall.com

Address: A1208, Overseas Decoration Building, #122 Zhenhua RD., Futian, Shenzhen, China



- NOTES:
- 1.0 MATERIAL:
 - 1.1 HOUSING, NUTS AND WASHER: STAINLESS STEEL PER QQ-S-764 AND ASTM-A-582, TYPE 303.
 - 1.2 DIELECTRIC: PTFE FLUOROCARBON PER ASTM-B194.
 - 1.3 CENTER CONTACT AND EXTENSION: BERYLLIUM COPPER ROD ALLOY C172, PER ASTM-D1457.
 - 2.0 PLATING:
 - 2.1 HOUSING, NUTS AND WASHER: PASSIVATED PER QQ-P-35 AND MIL-F-14072.
 - 2.2 CENTER CONTACT AND EXTENSION: GOLD PER MIL-G-45204, TYPE II, CLASS 1.
 - 3.0 MECHANICAL:
 - 3.1 INTERFACES PER MIL-STD-348A.
 - 3.2 CENTER CONTACT CAPTURED.
 - 4.0 ELECTRICAL:
 - 4.1 FREQUENCY RANGE: DC to 18.0 GHz
 - 4.2 MAX V.S.W.R.: $1.05 + .005f(\text{GHz})$
 - 4.3 NOMINAL IMPEDANCE: 50 OHMS
 - 5.0 DIMENSIONS IN BRACKETS ARE IN MILLIMETERS.



MOUNTING HOLE

UNLESS OTHERWISE NOTED DIMENSIONS ARE IN INCHES AND TOLERANCES ARE:		FSCM NO. 34078 MIDWEST MICROWAVE	
3 PLACE DECIMALS $\pm .005$		NOTICE: The information contained in this drawing is proprietary and must not be used without the permission of Midwest Microwave	
2 PLACE DECIMALS $\pm .02$			
FRACTIONS $\pm 1/64$		TITLE ADAPTER - SMA MALE TO BMA FEMALE BULKHEAD OUTLINE	
PARALLELITY: T.I.R. _____		DRAWING NUMBER ADT-2807-SM-BMF-02	
FLATNESS: T.I.R. _____		DRAWN/DATE S. ORLOV 8/9/02	ENG./DATE <i>Carl 8/9/02</i>
CONCENTRICITY: T.I.R. _____		CHECKED/DATE	APPROVED/DATE
ANGLES AND PERPENDICULARITY: $\pm 1^\circ$		SCALE: 10=1 SHEET 1 of 1	

REV.	DESCRIPTION	DATE
-	RELEASED	8/9/02