



Chipsmall Limited consists of a professional team with an average of over 10 year of expertise in the distribution of electronic components. Based in Hongkong, we have already established firm and mutual-benefit business relationships with customers from,Europe,America and south Asia,supplying obsolete and hard-to-find components to meet their specific needs.

With the principle of "Quality Parts,Customers Priority,Honest Operation,and Considerate Service",our business mainly focus on the distribution of electronic components. Line cards we deal with include Microchip,ALPS,ROHM,Xilinx,Pulse,ON,Everlight and Freescale. Main products comprise IC,Modules,Potentiometer,IC Socket,Relay,Connector.Our parts cover such applications as commercial,industrial, and automotives areas.

We are looking forward to setting up business relationship with you and hope to provide you with the best service and solution. Let us make a better world for our industry!



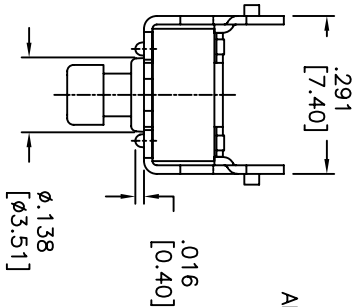
## Contact us

Tel: +86-755-8981 8866 Fax: +86-755-8427 6832

Email & Skype: info@chipsmall.com Web: www.chipsmall.com

Address: A1208, Overseas Decoration Building, #122 Zhenhua RD., Futian, Shenzhen, China





ADTSA644LV  
 ADTSA=RIGHT ANGLE TYPE  
 TACTILE SWITCH  
 PROD. SIZE  
 6=6X6mm  
 DIMENSION H:  
 44=.242 [6.15]  
 48=.242 [6.15]

SOLDERING:  
 V=LEAD FREE  
 COLOR OF STEM FOR FORCE  
 N=BROWN, 160gf  
 R=RED, 260gf  
 S=SALMON, 320gf

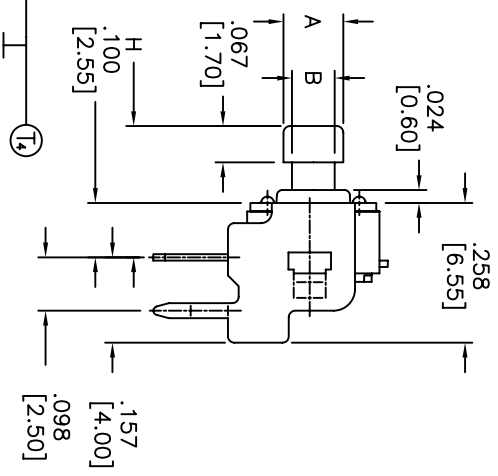
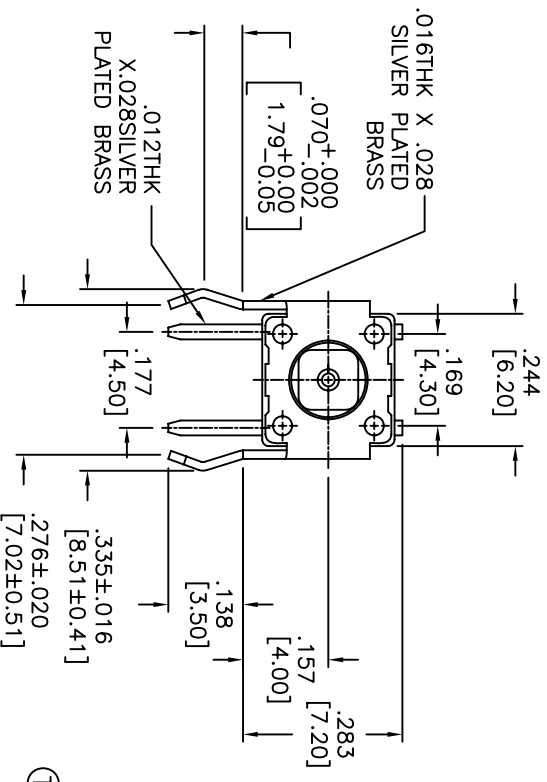
PART NO.	DIM. A	DIM. B
ADTSA644*V	.095	.063
ADTSA648*V	.110	.079

DATE	SYM	REVISION RECORD	DWN.	CK.

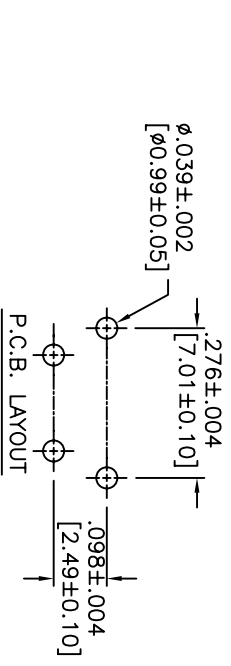
DESCRIPTION: MECHANICAL CONTACT SWITCH  
 SPECIFICATIONS:

STORAGE TEMP. RANGE: -30°C TO +80°C  
 OPERATING TEMPERATURE RANGE: -25°C to +70°C  
 RATING: 50ma AT 12VDC  
 CONTACT RESISTANCE: 100mohm MAX.  
 INSULATION RESISTANCE: 100mohm MIN, 500VDC.  
 DIELECTRIC STRENGTH: 250VAC FOR 1 MINUTE  
 ELECTRICAL LIFE: 100,000 CYCLES FOR 320gf, 260gf  
 ELECTRICAL LIFE: 200,000 CYCLES FOR 160gf  
 SHOCK RESISTANCE: 50G PER METHOD 213B,  
 MIL-STD-202F  
 VIBRATION RESISTANCE: PASSES METHOD 201A,  
 MIL-STD-202F  
 CONTACT ARRANGEMENT: 1 POLE, 1 THROW.

MATERIALS:  
 COVER: STEEL, TIN PLATED  
 CONTACT DISC: PHOSPHOR BRONZE WITH SILVER CLADDING  
 TERMINAL: BRASS WITH SILVER PLATING  
 BASE: UL 94V-0 NYLON THERMOPLASTIC COLOR: BLACK  
 STEM: UL 94V-0 NYLON THERMOPLASTIC  
 SOLDERING:  
 IR REFLOW: 260°C MAX.  
 HAND SOLDERING: 350°C MAX. FOR 5 SECONDS MAX.  
 (30 WATT IRON MAX.)  
 RoHS COMPLIANT  
 LEAD FREE PROCESS COMPATIBLE



CIRCUIT DIAGRAM



APEM CONFIDENTIAL  
 THIS DOCUMENT CONTAINS INFORMATION WHICH IS THE EXCLUSIVE PROPERTY OF APEM COMPONENTS, INC. DISTRIBUTION, REPRODUCTION OR USE BY OTHERS IS NOT PERMITTED WITHOUT THE EXPRESS WRITTEN CONSENT OF APEM COMPONENTS, INC.

TOLERANCES (EXCEPT AS NOTED)		TITLE	
DECIMAL	± .008	INCH	SCALE
FRACTIONAL	± 0/20	(MM)	DRAWN
ANGULAR	± —		APPROVED
DATE	06/22/05	DRAWING NUMBER	ADTSA64**V
REV	—		



TACTILE SWITCH R/A