



Chipsmall Limited consists of a professional team with an average of over 10 year of expertise in the distribution of electronic components. Based in Hongkong, we have already established firm and mutual-benefit business relationships with customers from,Europe,America and south Asia,supplying obsolete and hard-to-find components to meet their specific needs.

With the principle of "Quality Parts,Customers Priority,Honest Operation,and Considerate Service",our business mainly focus on the distribution of electronic components. Line cards we deal with include Microchip,ALPS,ROHM,Xilinx,Pulse,ON,Everlight and Freescale. Main products comprise IC,Modules,Potentiometer,IC Socket,Relay,Connector.Our parts cover such applications as commercial,industrial, and automotives areas.

We are looking forward to setting up business relationship with you and hope to provide you with the best service and solution. Let us make a better world for our industry!



Contact us

Tel: +86-755-8981 8866 Fax: +86-755-8427 6832

Email & Skype: info@chipsmall.com Web: www.chipsmall.com

Address: A1208, Overseas Decoration Building, #122 Zhenhua RD., Futian, Shenzhen, China

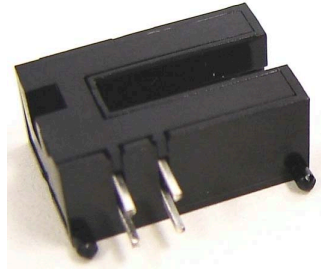


AEDS-9300

Transmissive Photointerrupter



Data Sheet



Description

The photointerrupter consists of a Gallium Arsenide infrared light emitting diode and a NPN silicon phototransistor built in a black plastic housing. It is a transmissive subminiature photointerrupter.

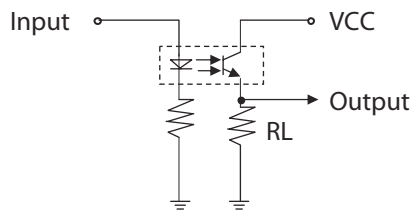


Figure 1: Illustrates Basic Configuration of Photointerrupter

Features

- Non-Contact Sensing
- Infra-Red Wavelength
- Fast Switching Speed
- Mounting Guide Pins
- RoHS Compliant
- -25 °C to +85 °C Operating Temp.

Applications

- Optical Switch
- ATM Machines
- Vending Machines
- Edge, Position Detections
- Office Automation Equipments

Theory of Operation

The photo-interrupter consists of an Infrared light source and a photo-diode in a single Dual-in-Line package. The photo-interrupter could be mounted onto a PC board with a current-limiting resistor in series externally with the Infrared Emitting Diode. With this, such input voltage for the emitting diode could share the same voltage level as VCC.

Regarding the photo-interrupter output, there will always be current output measured but with the external resistor, RL connected as shown in Figure1, analog voltage output could then be obtained.

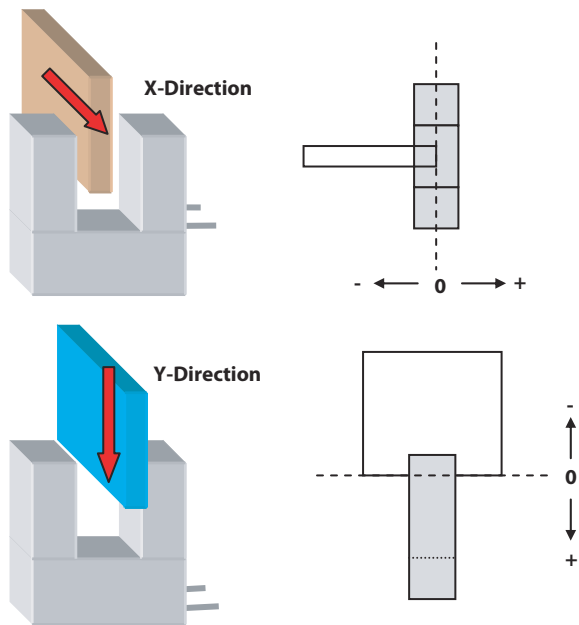
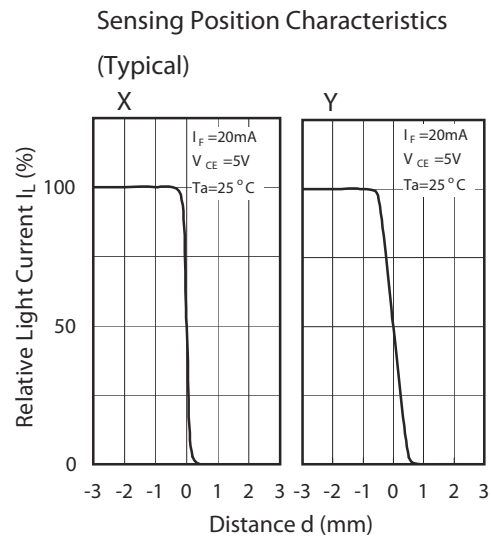


Figure 2: Illustrates Photo-Interrupter Positioning Sensing Characteristics. Obstacles (Slots) could interrupt along X-axis or Y-axis

With both the infrared light source and the photo diode in a single package, the photo-interrupter employs transmissive technology to sense obstacles existence, acts as on / off switchers or even to sense low-resolution rotary or linear motions. The photo-interrupter is specified for operation over $-25\text{ }^{\circ}\text{C}$ to $+85\text{ }^{\circ}\text{C}$ temperature range.

As a basic switcher, the photo-interrupter would have a position detecting characteristics as shown in Figure 2. These characteristic diagrams give the relationship between Relative Light Current, I_L and Distance of displacement, d . Note that the slot (obstacle) introduced in between the emitting diode and the photo-diode could applied in two directions. One is of X-axis and another would be of Y-axis.

Therefore, with the presence of slot, the photo-interrupter would actually give a low logic output. Vice versa, the photo-interrupter will provide a high logic output without the existence of the slot. Refer to Figure 3. Typically, Rise Time, t_r and Fall Time t_f will have the same value, $15\mu\text{s}$.

With special design of the slots, periodic presence and absence could be generated. Such output signal is useful in determining low-resolution ($>0.5\text{mm}$ pitch) motor rotation positioning and motor spinning speed.

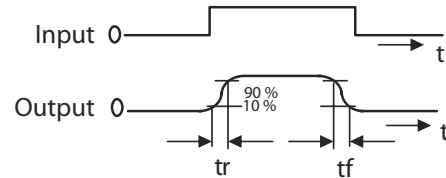


Figure 3: Response Time Measurement of Output Signal.

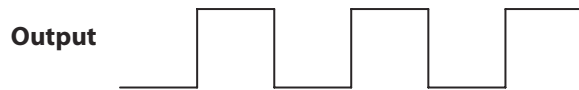


Figure 4: Periodical Output signal could be used to determine the Motor Spinning Speed and Rotation positioning.

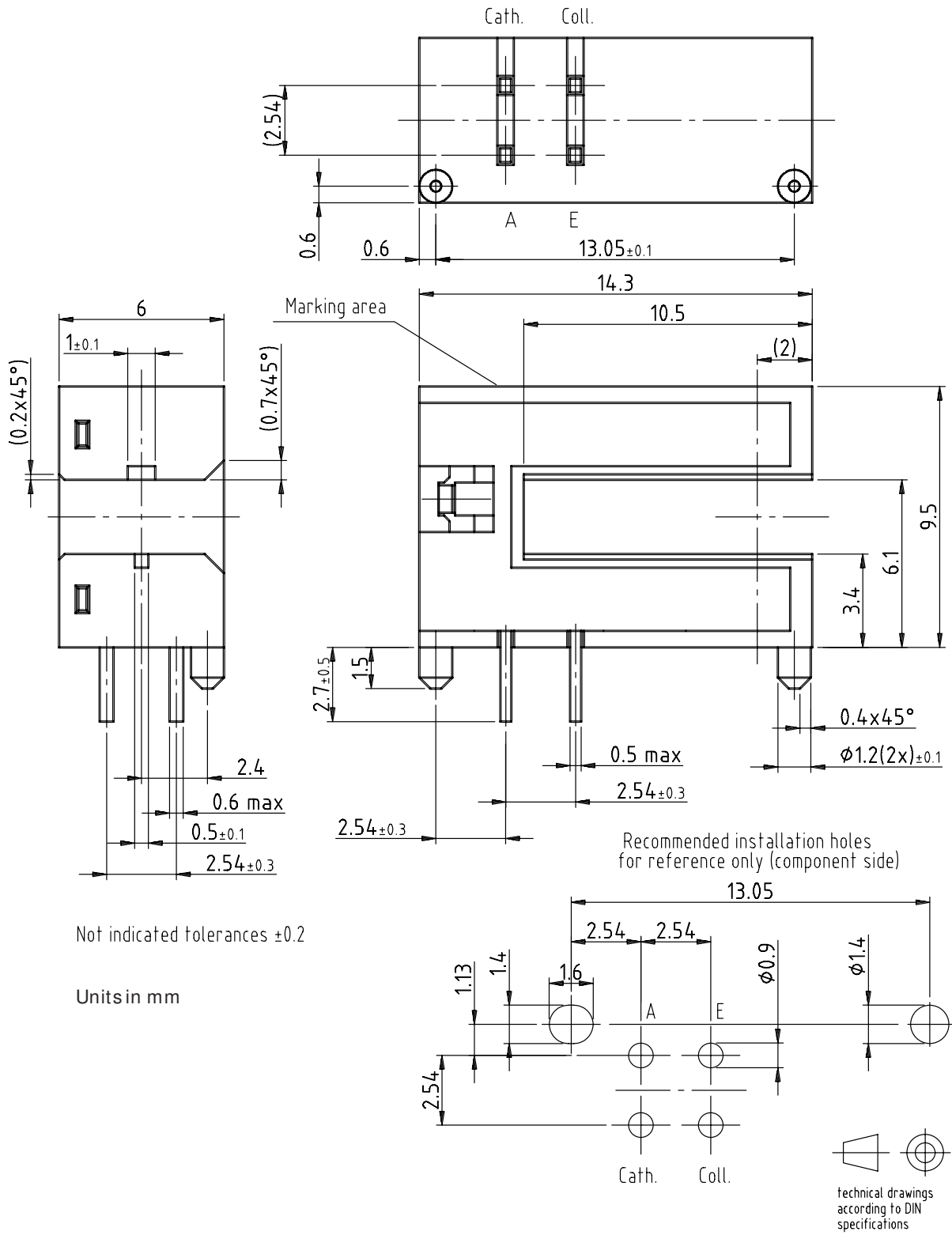
Absolute Maximum Ratings @ $T_A=25^\circ\text{C}$

Parameter	Maximum Rating	Unit
Reverse voltage	5	V
Forward current	50	mA
Forward surge current (10 μs pulse)	1	A
Collector Emitter voltage	30	V
Emitter Collector voltage	5	V
Power dissipation	175	mW
Operation temperature range	-25 $^\circ\text{C}$ to 85 $^\circ\text{C}$	
Storage temperature range	-40 $^\circ\text{C}$ to 85 $^\circ\text{C}$	
Soldering temperature	260 $^\circ\text{C}$ for 5 seconds	

Optical-Electrical Characteristics $T_A=25^\circ\text{C}$

Parameter	Symbol	Min.	Typ.	Max.	Unit	Test Conditions
Forward voltage	V_F	-	1.2	1.35	V	$I_F=20\text{mA}$
Collector Current	I_C	0.8	-	10	mA	$I_F=20\text{mA}$, $V_{CE} = 5\text{V}$
Collector Emitter voltage	V_{CEO}	30	-	-	V	$I_e=0.1\text{mA}$, $E_e=0\text{mW}/\text{cm}^2$
Emitter Collector voltage	V_{ECO}	5	-	-	V	$I_e=0.1\text{mA}$, $E_e=0\text{mW}/\text{cm}^2$
Collector dark current	I_{CEO}	-	-	100	nA	$V_{CE}=10\text{V}$, $E_e=0\text{mW}/\text{cm}^2$
Collector Emitter saturation voltage	$V_{CE(SAT)}$	-	-	0.4	V	$I_e=0.5\text{mA}$, $E_e=0.1\text{mW}/\text{cm}^2$
Rising time	T_r	-	15	-	μs	$V_{CE}=5\text{V}$, $R_L=1\text{k}\Omega$, $I_C=1\text{mA}$
Falling time	T_f	-	15	-	μs	

Outline Drawing



Not indicated tolerances ±0.2

Units in mm

Typical Optical-Electrical Curves

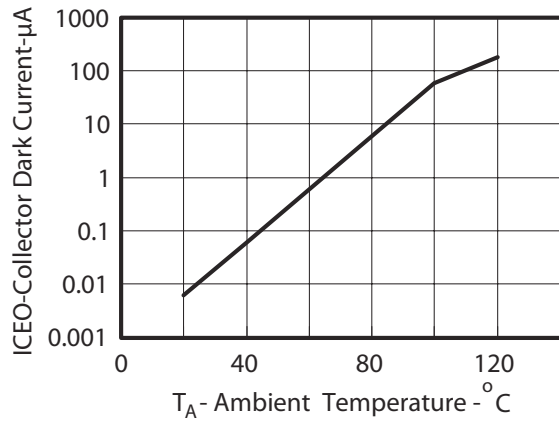


Figure 5: Collector Dark Current Vs Ambient Temperature

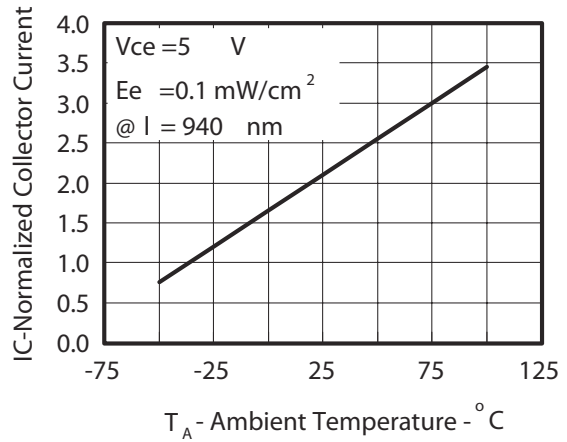


Figure 6: Normalized Collector Current Vs Ambient Temperature

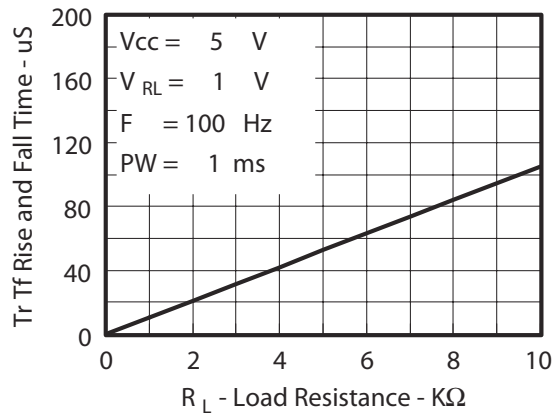


Figure 7: Rise and Fall Times Vs Load Resistance

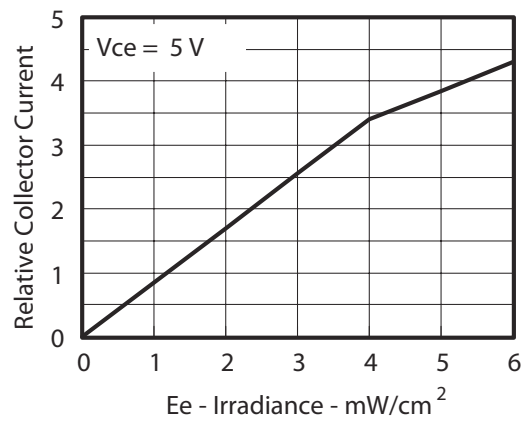


Figure 8: Relative Collector Current Vs Irradiance

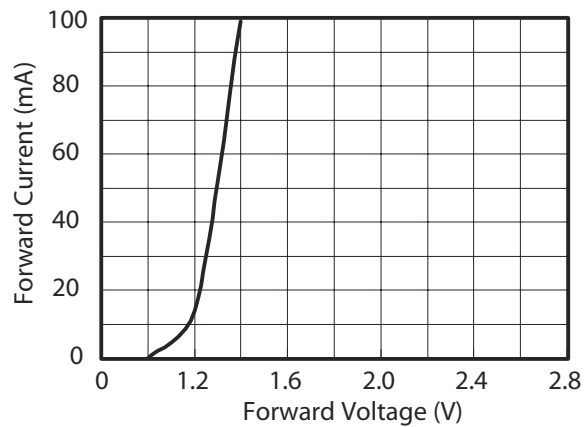


Figure 9: Forward Current Vs Forward Voltage

For product information and a complete list of distributors, please go to our web site: www.avagotech.com

Avago, Avago Technologies, and the A logo are trademarks of Avago Technologies, Limited in the United States and other countries.
Data subject to change. Copyright © 2006 Avago Technologies Pte. All rights reserved.
AV01-0363EN - August 21, 2006

