



Chipsmall Limited consists of a professional team with an average of over 10 year of expertise in the distribution of electronic components. Based in Hongkong, we have already established firm and mutual-benefit business relationships with customers from,Europe,America and south Asia,supplying obsolete and hard-to-find components to meet their specific needs.

With the principle of “Quality Parts,Customers Priority,Honest Operation,and Considerate Service”,our business mainly focus on the distribution of electronic components. Line cards we deal with include Microchip,ALPS,ROHM,Xilinx,Pulse,ON,Everlight and Freescale. Main products comprise IC,Modules,Potentiometer,IC Socket,Relay,Connector.Our parts cover such applications as commercial,industrial, and automotives areas.

We are looking forward to setting up business relationship with you and hope to provide you with the best service and solution. Let us make a better world for our industry!



## Contact us

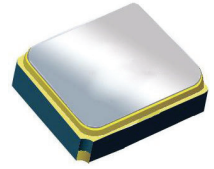
Tel: +86-755-8981 8866 Fax: +86-755-8427 6832

Email & Skype: info@chipsmall.com Web: www.chipsmall.com

Address: A1208, Overseas Decoration Building, #122 Zhenhua RD., Futian, Shenzhen, China



# Surface Mount 1900.00MHz SAW Filter



1.4 x 1.1 x 0.7 mm

**AFS14A40-1900.00-T3**

Moisture Sensitivity Level (MSL) – This product is Hermetically Sealed and not Moisture Sensitive - MSL = N/A: Not Applicable



➤ **FEATURES:**

- 1.4 x 1.1 x 0.7 mm low profile SMT package
- Low Insertion loss
- Excellent selectivity with high out-of-band rejection

➤ **APPLICATIONS:**

- Wireless Communication
- Remote Control
- Cellular Phones

➤ **ELECTRICAL SPECIFICATIONS:**

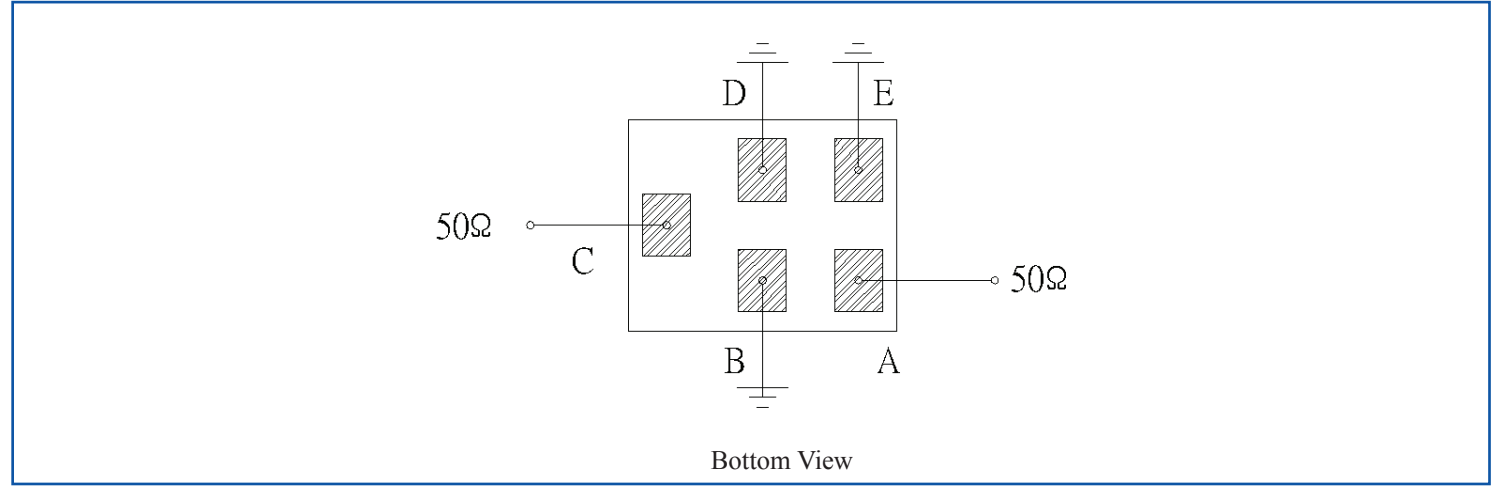
**Maximum Ratings**

Item	Value
Input Power Level	+13 dBm max.
DC Permissive Voltage	3.0V DC max.
Operating Temperature Range	-30°C to + 85°C
Storage Temperature Range	-40°C to + 85°C

Parameters	Minimum	Typical	Maximum	Units	Notes
Center Frequency ( $f_c$ )		1900.00		MHz	
Insertion Loss (IL)		2.0	2.7	dB	1880 ~ 1920MHz
Effective Bandwidth		40		MHz	
Amplitude Ripple		0.5	1.2	dB	1880 ~ 1920MHz
Worst-Case Input / Output Return Loss	9.5	11.7		dB	
Stop-band Attenuation (Referenced to 0.0 dB)	40	45		dB	D.C~1395 MHz
	40	48			1395~1435 MHz
	33	36			1435~1805 MHz
	25	33			1805~1840 MHz
	25	27			2000~2135 MHz
	31	34			2135~2175 MHz
	30	36			2175~3500 MHz
	22	29			3500~6000 MHz
Source Impedance ( $Z_s$ )		50		$\Omega$	See note # 1
Load Impedance ( $Z_L$ )		50		$\Omega$	See note # 1

**Note #1:** No matching network required for operation into 50 $\Omega$ 's

➤ **TEST CIRCUIT:**

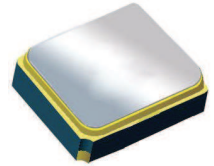


# Surface Mount 1900.00MHz SAW Filter

AFS14A40-1900.00-T3

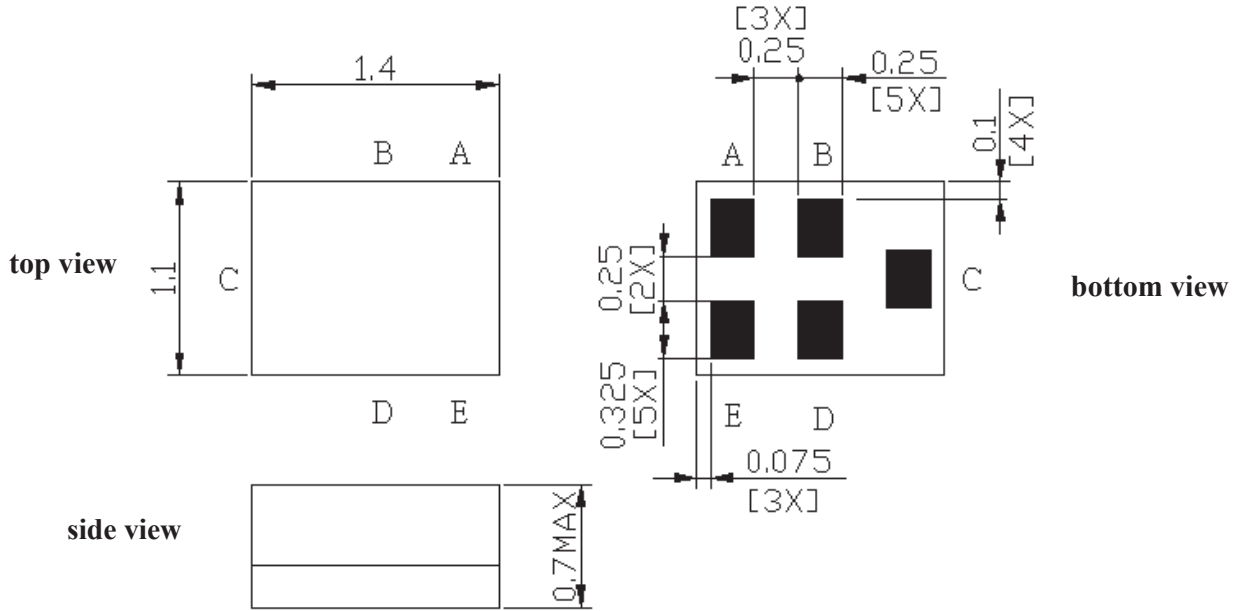


**RoHS**  
Compliant



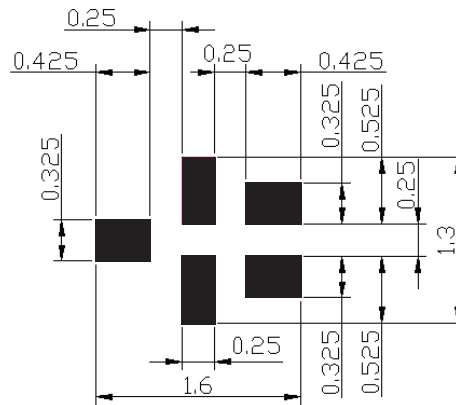
1.4 x 1.1 x 0.7 mm

## OUTLINE DIMENSIONS:



<b>C:</b>	Input
<b>A:</b>	Output
<b>B, D, E:</b>	Ground

### Recommended Land Pattern:



■ : Land Pattern  
Unit : mm

\*All Dimensions are in mm

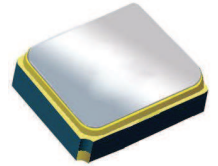


# Surface Mount 1900.00MHz SAW Filter

AFS14A40-1900.00-T3



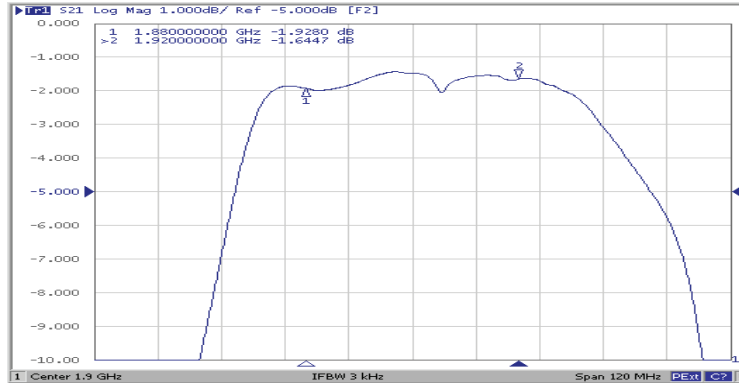
RoHS  
Compliant



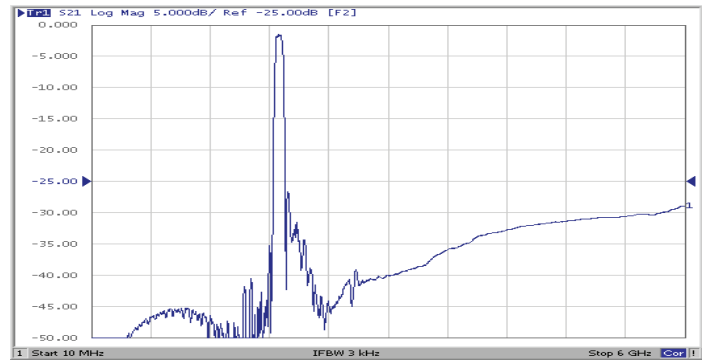
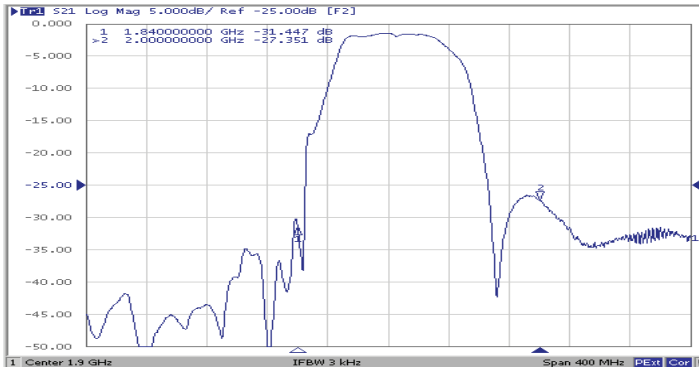
1.4 x 1.1 x 0.7 mm

## FREQUENCY CHARACTERISTICS:

### Filter Frequency Response (Narrowband)

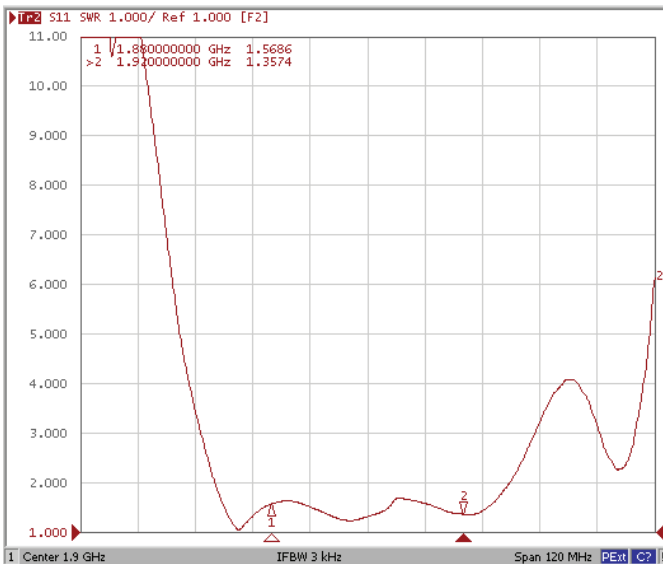


### Filter Frequency Response (Wideband)

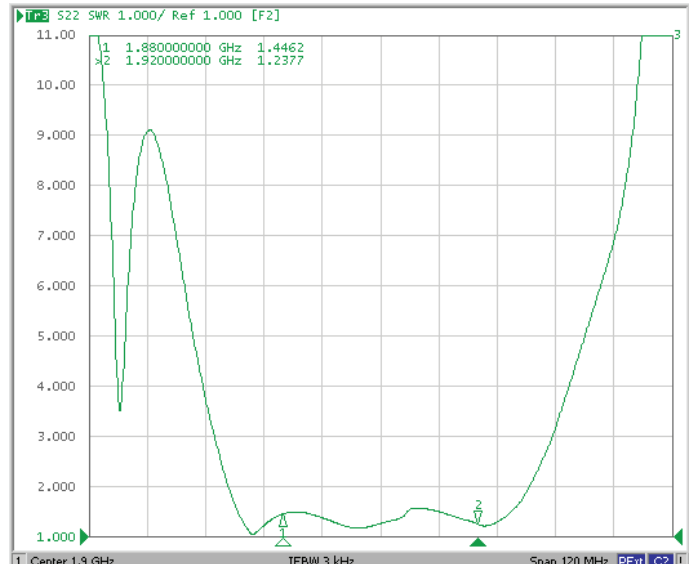


## REFLECTION FUNCTIONS:

### S11



### S22

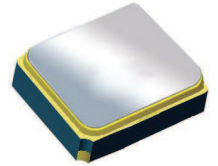


# Surface Mount 1900.00MHz SAW Filter

AFS14A40-1900.00-T3

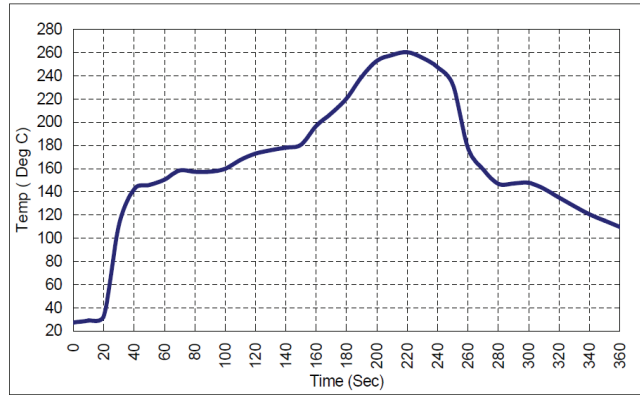


RoHS  
Compliant



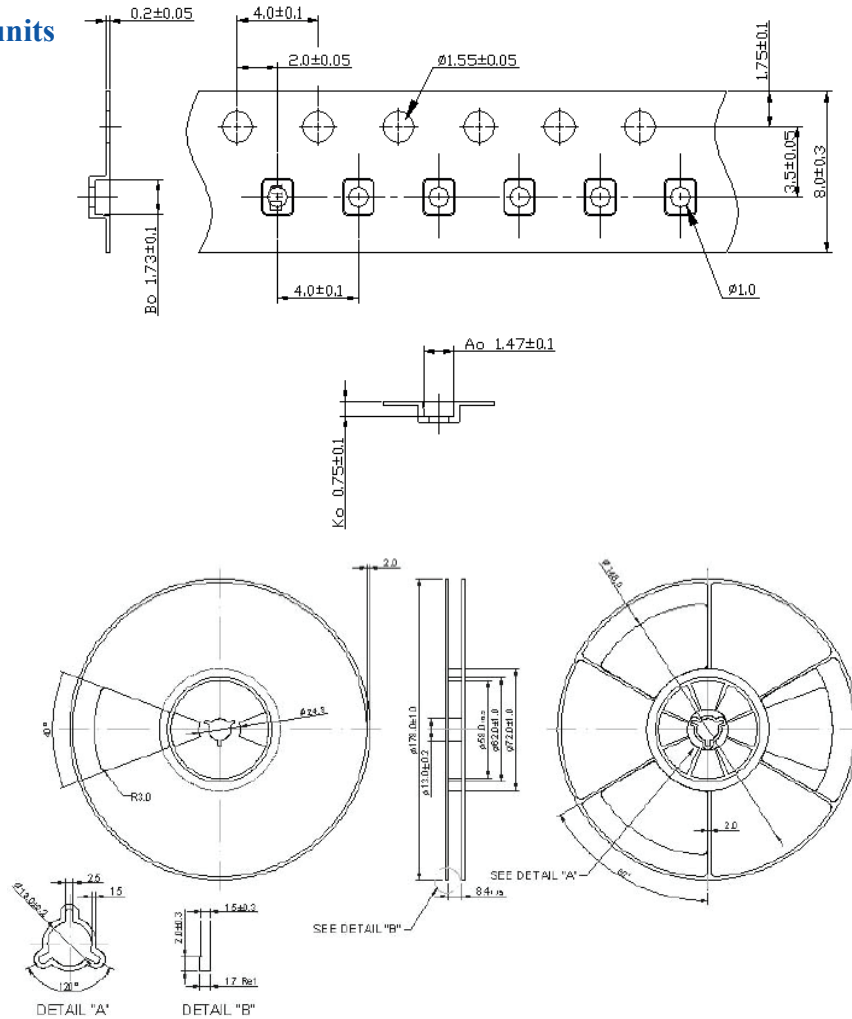
1.4 x 1.1 x 0.7 mm

## REFLOW PROFILE:



## PACKAGING: 3000 Units/Reel "-T2" parts (2k/reel) are no longer available effective 01/01/2013

Reel Count : 7" = 3k units



Dimensions: mm

**ATTENTION:** Abracon Corporation's products are COTS – Commercial-Off-The-Shelf products; suitable for Commercial, Industrial and, where designated, Automotive Applications. Abracon's products are not specifically designed for Military, Aviation, Aerospace, Life-dependant Medical applications or any application requiring high reliability where component failure could result in loss of life and/or property. For applications requiring high reliability and/or presenting an extreme operating environment, written consent and authorization from Abracon Corporation is required. Please contact Abracon Corporation for more information.

ABRACON IS  
ISO 9001:2008  
CERTIFIED



Visit [www.abracon.com](http://www.abracon.com) for Terms & Conditions of Sale  
30332 Esperanza, Rancho Santa Margarita, California 92688  
tel 949-546-8000 | fax 949-546-8001 | [www.abracon.com](http://www.abracon.com)

Revised: 04.16.13