



Chipsmall Limited consists of a professional team with an average of over 10 year of expertise in the distribution of electronic components. Based in Hongkong, we have already established firm and mutual-benefit business relationships with customers from,Europe,America and south Asia,supplying obsolete and hard-to-find components to meet their specific needs.

With the principle of “Quality Parts,Customers Priority,Honest Operation,and Considerate Service”,our business mainly focus on the distribution of electronic components. Line cards we deal with include Microchip,ALPS,ROHM,Xilinx,Pulse,ON,Everlight and Freescale. Main products comprise IC,Modules,Potentiometer,IC Socket,Relay,Connector.Our parts cover such applications as commercial,industrial, and automotives areas.

We are looking forward to setting up business relationship with you and hope to provide you with the best service and solution. Let us make a better world for our industry!



Contact us

Tel: +86-755-8981 8866 Fax: +86-755-8427 6832

Email & Skype: info@chipsmall.com Web: www.chipsmall.com

Address: A1208, Overseas Decoration Building, #122 Zhenhua RD., Futian, Shenzhen, China



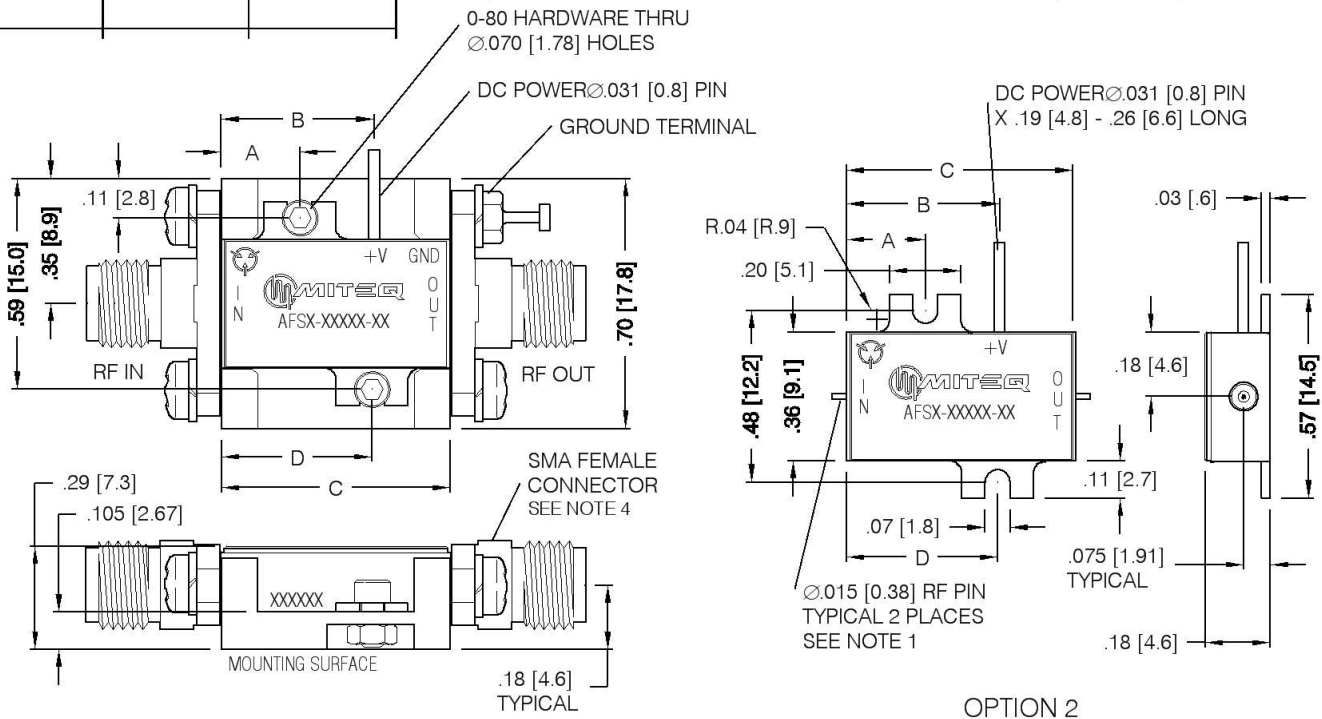
Current Revision

As of 12/27/2011 1:27:16 PM

DWALATA



DASH NO.	APPLICATION		REVISIONS			
	NEXT ASSY	USED ON	LTR	DESCRIPTION	DATE	APPROVED
			N	Incorporate ECN 20596	09/14/11	<i>R.Scherer</i>



AMPLIFIER MAY BE READILY USED AS IS, BY REMOVING EXISTING 0-80 HARDWARE AND SUBSTITUTING WITH LONGER 0-80 SCREWS FOR CUSTOMER MOUNTING

"DROP-IN" AMPLIFIER BY REMOVING "SMA" CONNECTORS AND MOUNTING HARDWARE AS SHOWN

NOTES

- RF PIN LENGTH FROM BODY TO BE 0.080 [2.03] NOMINAL, 0.050 [1.27] MIN, 0.100 [2.54] MAX
- DIMENSIONS SHOWN IN BRACKETS ARE IN MILLIMETERS
- MARKING MAY VARY
- STANDARD CONNECTOR CONFIGURATION SHOWN, FOR ALTERNATE GENDER OPTION ADD SUFFIX FM, MF, OR MM AT THE END OF DASH NUMBER
EXAMPLE: 113384-4MF (AFS DASH 4 WITH MALE INPUT AND FEMALE OUTPUT)

DASH	DIM A	DIM B	DIM C	DIM D
2	.16 [4.1]	.28 [7.1]	.43 [10.9]	.27 [6.9]
3	.16 [4.1]	.32 [8.1]	.53 [13.5]	.38 [9.7]
4	.22 [5.6]	.43 [10.9]	.64 [16.3]	.42 [10.7]
5	.22 [5.6]	.53 [13.5]	.75 [19.1]	.53 [13.5]
6	.22 [5.6]	.64 [16.3]	.86 [21.8]	.64 [16.3]
7	.22 [5.6]	.75 [19.1]	.97 [24.6]	.75 [19.1]
8	.22 [5.6]	.86 [21.8]	1.07 [27.2]	.86 [21.8]

UNLESS OTHERWISE SPECIFIED DIMENSIONS ARE IN INCHES TOLERANCES ON DECIMAL .X ±0.1 [2.5] DECIMAL .XX ±0.01 [0.25] DECIMAL .XXX ±0.005 [0.13] ANGLES X° ±30'	NAME	DATE	100 Davids Drive, Hauppauge, New York 11788		
	DWN <i>D. Schmitz</i>	07/19/88			
	DFT DGN <i>R.Scherer</i>	12/12/11	AFS SERIES AMPLIFIER OUTLINE		
	PROJ ENGR <i>J. Buonaiuto</i>	12/12/11			
ESD SENSITIVE COMPONENT	MFG ENGR		SIZE	CODE IDENT. NO.	REV
	Q.C.		A	33592	N
	CUST		SCALE 2:1	PROJECT	SHEET 1 OF 1