



Chipsmall Limited consists of a professional team with an average of over 10 year of expertise in the distribution of electronic components. Based in Hongkong, we have already established firm and mutual-benefit business relationships with customers from,Europe,America and south Asia,supplying obsolete and hard-to-find components to meet their specific needs.

With the principle of “Quality Parts,Customers Priority,Honest Operation,and Considerate Service”,our business mainly focus on the distribution of electronic components. Line cards we deal with include Microchip,ALPS,ROHM,Xilinx,Pulse,ON,Everlight and Freescale. Main products comprise IC,Modules,Potentiometer,IC Socket,Relay,Connector.Our parts cover such applications as commercial,industrial, and automotives areas.

We are looking forward to setting up business relationship with you and hope to provide you with the best service and solution. Let us make a better world for our industry!



Contact us

Tel: +86-755-8981 8866 Fax: +86-755-8427 6832

Email & Skype: info@chipsmall.com Web: www.chipsmall.com

Address: A1208, Overseas Decoration Building, #122 Zhenhua RD., Futian, Shenzhen, China



Surface Mount 719.0MHz SAW Filter

AFS20A05-719.00-T3

 RoHS/RoHS II Compliant



2.0 x 1.6 x 0.75 mm

Moisture Sensitivity Level (MSL) – This product is Hermetically Sealed and not Moisture Sensitive - MSL = N/A: Not Applicable

FEATURES:

- 2.0 x 1.6 x 0.75 mm low profile SMT package
- Low Insertion loss
- Excellent selectivity with high out-of-band rejection

APPLICATIONS:

- Wireless Communication
- Remote Control
- Cellular Phones

ELECTRICAL SPECIFICATIONS:

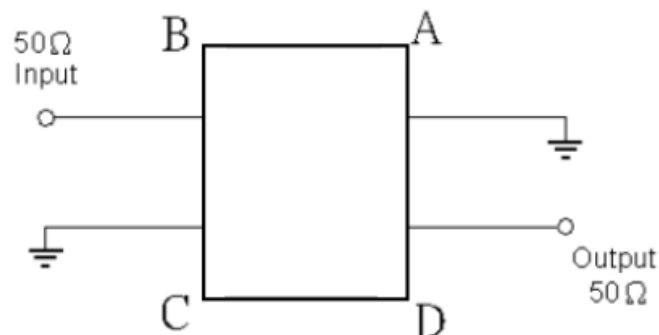
Maximum Ratings

Item	Value
Input Power Level	+10 dBm max.
DC Permissive Voltage	3V DC max.
Operating Temperature Range	-30°C to + 85°C
Storage Temperature Range	-40°C to + 85°C

Parameters	Minimum	Typical	Maximum	Units	Notes
Center Frequency (f_c)		719		MHz	
Insertion Loss (IL)		3.00	3.20	dB	716.5 ~ 721.5MHz
Effective Bandwidth		5.00		MHz	
Amplitude Ripple		0.90	2.20	dB	716.5 ~ 721.5MHz
Group Delay Variation		38	95	ns	716.5 ~ 721.5MHz
Worst-Case Input / Output Return Loss	5	8		dB	716.5 ~ 721.5MHz
Stop-band Attenuation (Referenced to 0.0 dB)	40	49		dB	DC ~ 690MHz
	35	44			690 ~ 704MHz
	30	44			704 ~ 710MHz
	25	30			728 ~ 734MHz
	27	40			734 ~ 750MHz
	37	50			750 ~ 824MHz
	45	51			824 ~ 960MHz
	32	35			960 ~ 2500MHz
Source Impedance (Z_S)		50		Ω	See note # 1
Load Impedance (Z_L)		50		Ω	See note # 1

Note #1: No matching network required for operation into 50 Ω 's

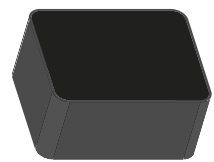
TEST CIRCUIT:



Surface Mount 719.0MHz SAW Filter

AFS20A05-719.00-T3

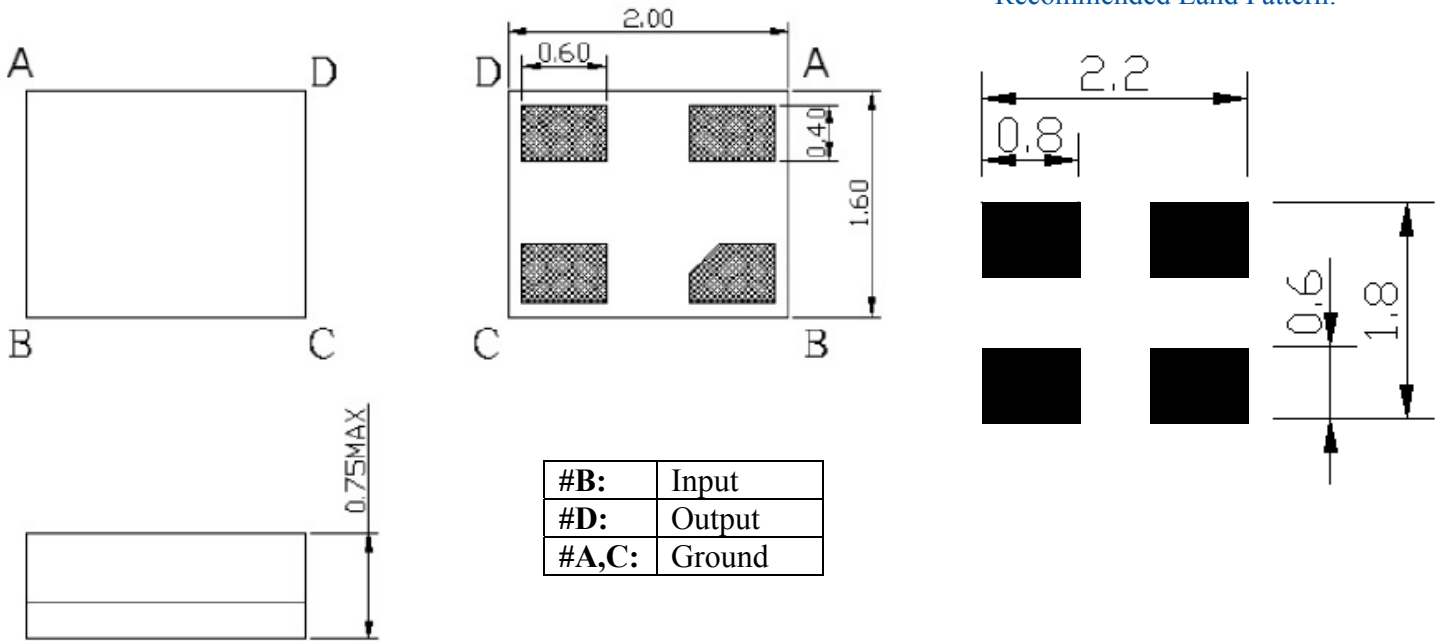
 RoHS/RoHS II Compliant



2.0 x 1.6 x 0.75 mm

OUTLINE DIMENSIONS:

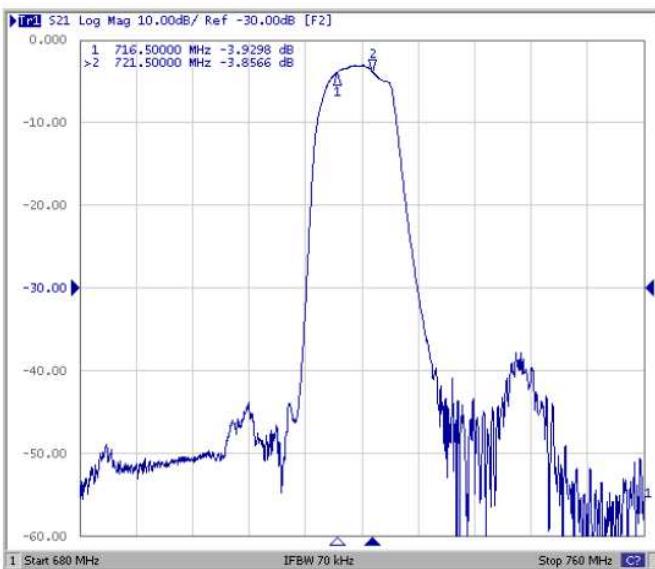
Recommended Land Pattern:



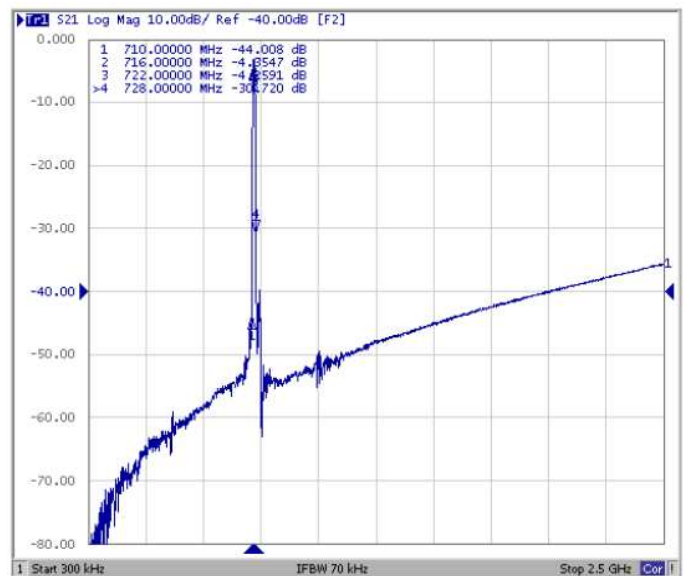
*All Dimensions are in mm

FREQUENCY CHARACTERISTICS:

Filter Frequency Response (Narrowband)



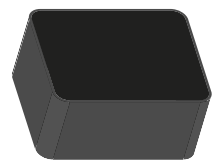
Filter Frequency Response (Wideband)



Surface Mount 719.0MHz SAW Filter

AFS20A05-719.00-T3

 RoHS/RoHS II Compliant



2.0 x 1.6 x 0.75 mm

FREQUENCY CHARACTERISTIC:

Input Return Loss (S11)



Output Return Loss (S22)



Note # 2: Detail S-parameter information (.s2p file) available upon request

REFLOW PROFILE:

