



Chipsmall Limited consists of a professional team with an average of over 10 year of expertise in the distribution of electronic components. Based in Hongkong, we have already established firm and mutual-benefit business relationships with customers from,Europe,America and south Asia,supplying obsolete and hard-to-find components to meet their specific needs.

With the principle of “Quality Parts,Customers Priority,Honest Operation,and Considerate Service”,our business mainly focus on the distribution of electronic components. Line cards we deal with include Microchip,ALPS,ROHM,Xilinx,Pulse,ON,Everlight and Freescale. Main products comprise IC,Modules,Potentiometer,IC Socket,Relay,Connector.Our parts cover such applications as commercial,industrial, and automotives areas.

We are looking forward to setting up business relationship with you and hope to provide you with the best service and solution. Let us make a better world for our industry!



Contact us

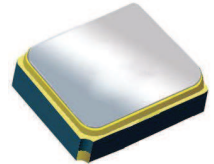
Tel: +86-755-8981 8866 Fax: +86-755-8427 6832

Email & Skype: info@chipsmall.com Web: www.chipsmall.com

Address: A1208, Overseas Decoration Building, #122 Zhenhua RD., Futian, Shenzhen, China



Surface Mount 915.00MHz SAW Filter



2.0 x 1.6 x 0.9 mm

AFS20A26-915.00-T3

Moisture Sensitivity Level (MSL) – This product is Hermetically Sealed and not Moisture Sensitive - MSL = N/A: Not Applicable



**RoHS
Compliant**

FEATURES:

- 2.0 x 1.6 x 0.9 mm low profile SMT package
- Low Insertion loss
- Excellent selectivity with high out-of-band rejection

APPLICATIONS:

- Wireless Communication
- Remote Control
- Cellular Phones

ELECTRICAL SPECIFICATIONS:

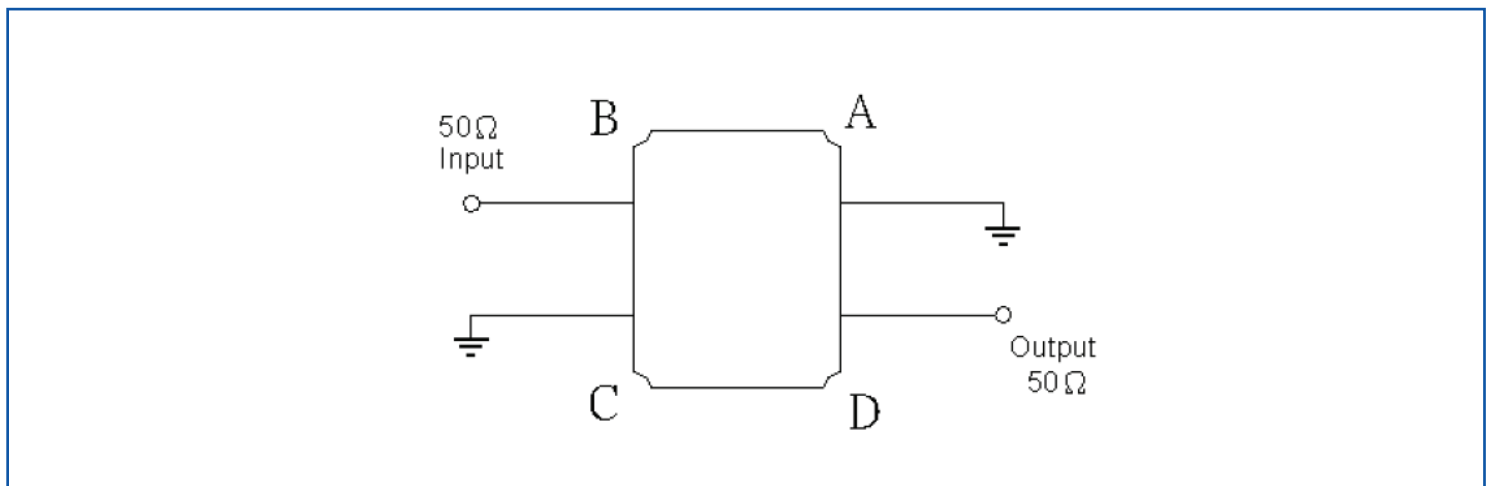
Maximum Ratings

Item	Value
Input Power Level	+15 dBm max.
DC Permissive Voltage	3V DC max.
Operating Temperature Range	-40°C to + 85°C
Storage Temperature Range	-40°C to + 85°C

Parameters	Minimum	Typical	Maximum	Units	Notes
Center Frequency (f_c)		915.00		MHz	
Insertion Loss (IL)		2.00	3.00	dB	902 ~ 928MHz
Effective Bandwidth		26		MHz	
Amplitude Ripple		0.80	1.50	dB	902 ~ 928MHz
Worst-Case Input / Output Return Loss		9.5	8.0	dB	902 ~ 928MHz
Stop-band Attenuation (Referenced to 0.0 dB)	40	55		dB	10MHz ~ 857.5MHz
	35	48			857.5MHz ~ 882.5MHz
	35	48			970MHz ~ 1005MHz
	45	52			1005MHz ~ 1110MHz
	30	35			1110MHz ~ 3000MHz
Source Impedance (Z_s)		50		Ω	See note # 1
Load Impedance (Z_L)		50		Ω	See note # 1

Note #1: No matching network required for operation into 50 Ω 's

TEST CIRCUIT:

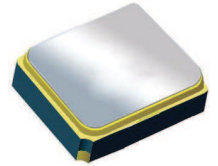


Surface Mount 915.00MHz SAW Filter

AFS20A26-915.00-T3

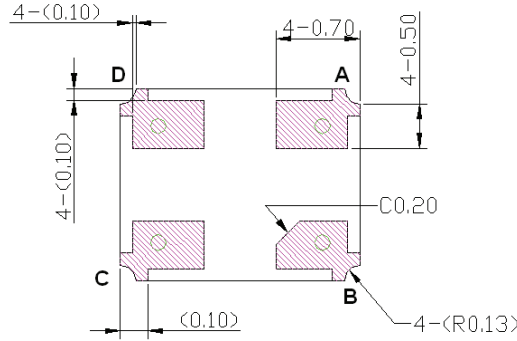
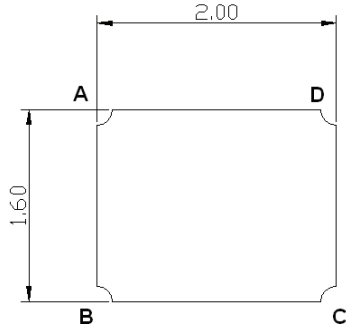


RoHS
Compliant

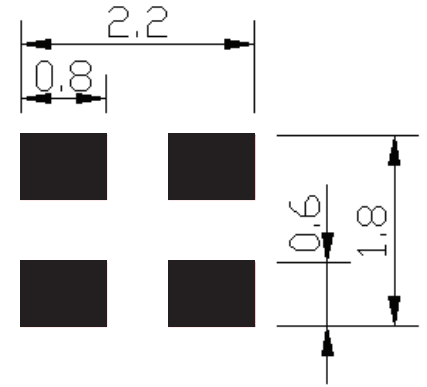


2.0 x 1.6 x 0.9 mm

OUTLINE DIMENSIONS:



Recommended Land Pattern:

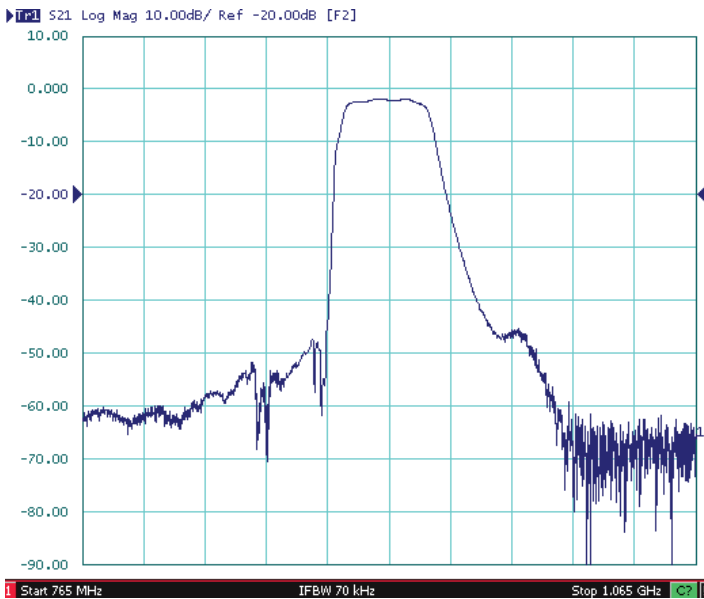


#B:	Input
#D:	Output
#A,C:	Ground
Unit:	mm

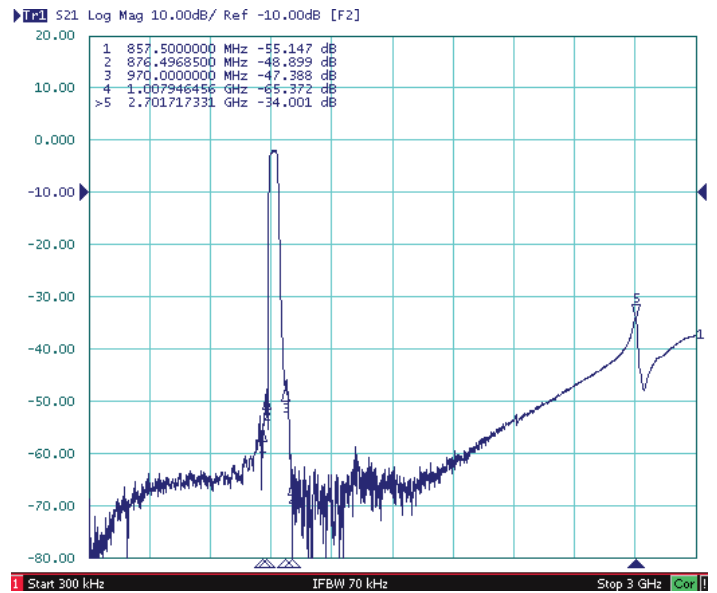
*All Dimensions are in mm

FREQUENCY CHARACTERISTICS:

Filter Frequency Response (Narrowband)



Filter Frequency Response (Wideband)

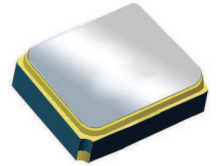


Surface Mount 915.00MHz SAW Filter

AFS20A26-915.00-T3

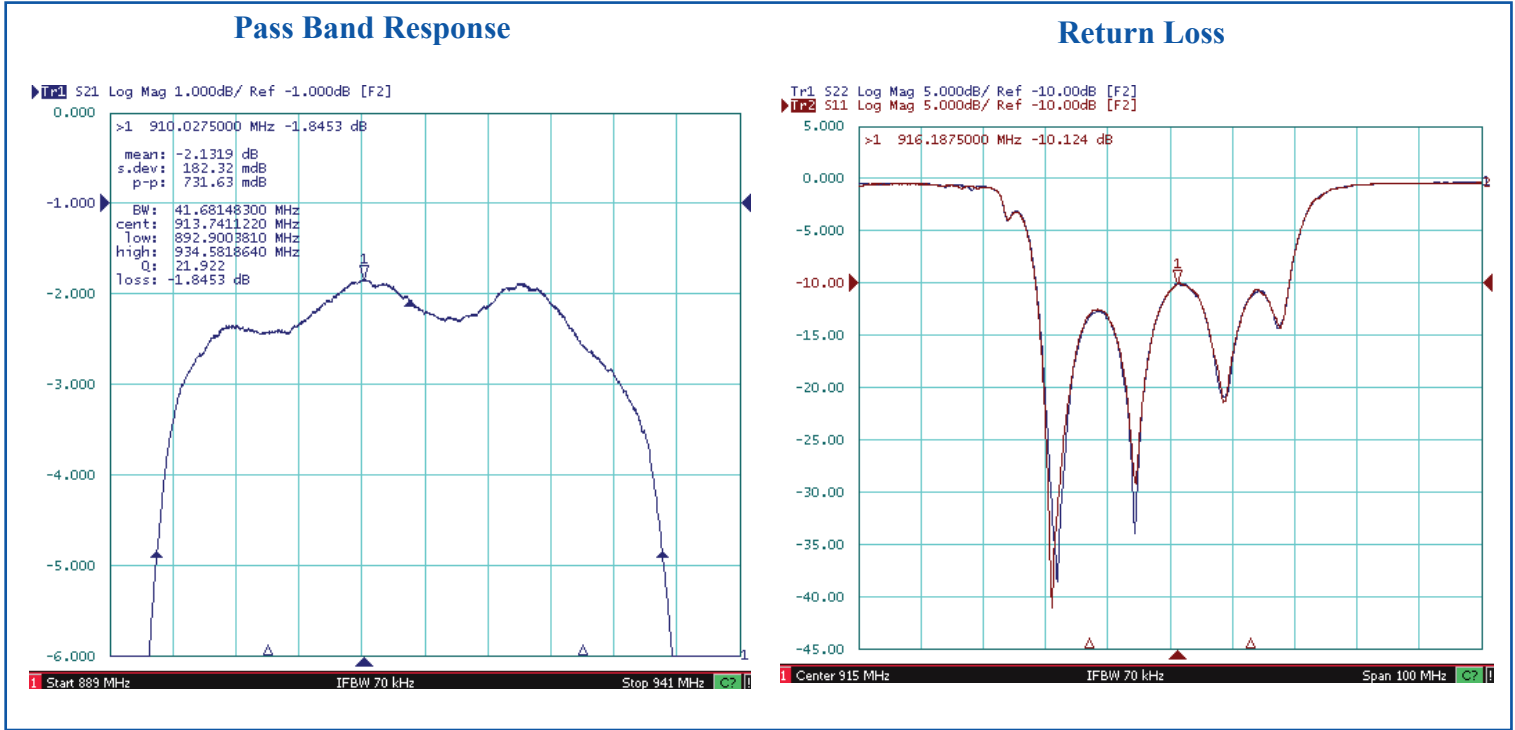


RoHS
Compliant

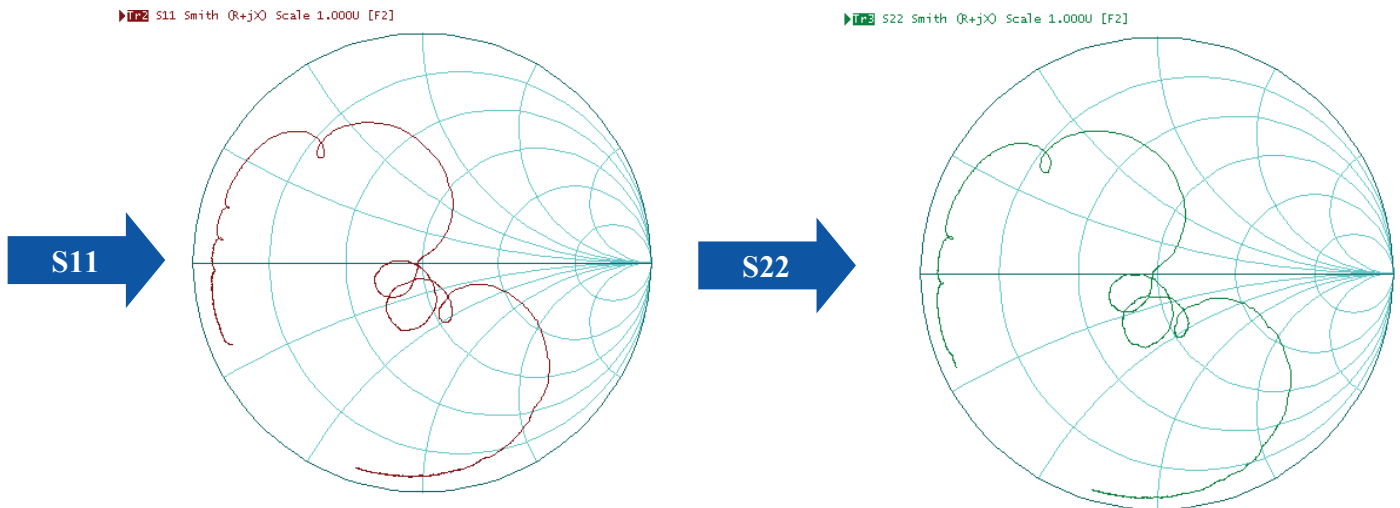


2.0 x 1.6 x 0.9 mm

FREQUENCY CHARACTERISTIC:



Reflection Functions:



Note # 2: Detail S parameter information (.s2p file) available upon request



1501 Hidden Creek Lane Spicewood TX 78751
Phone: 949-546-8000 | Fax: 949-546-8001
For terms and conditions of sales visit:
www.abracon.com

REVISED: 07/11/2018

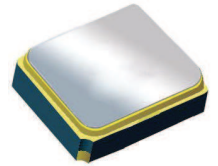
ABRACON IS
ISO9001-2015
CERTIFIED

Surface Mount 915.00MHz SAW Filter

AFS20A26-915.00-T3

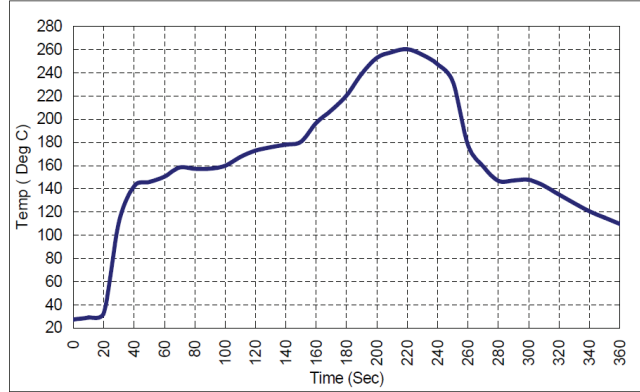


RoHS
Compliant



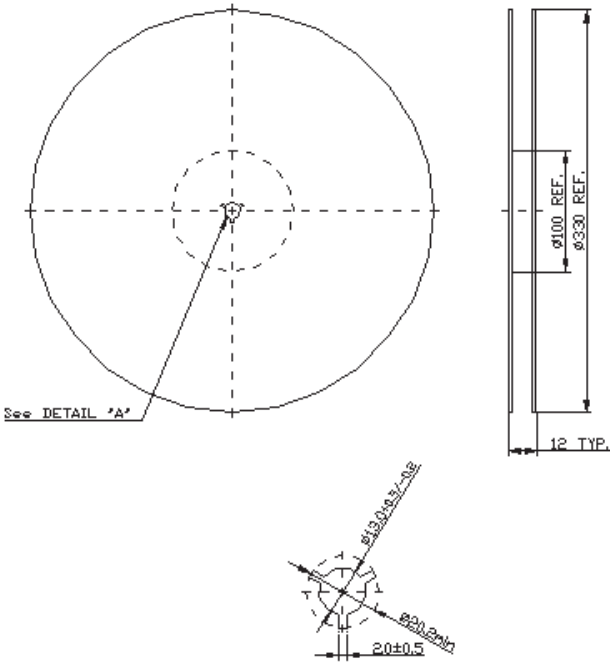
2.0 x 1.6 x 0.9 mm

REFLOW PROFILE:

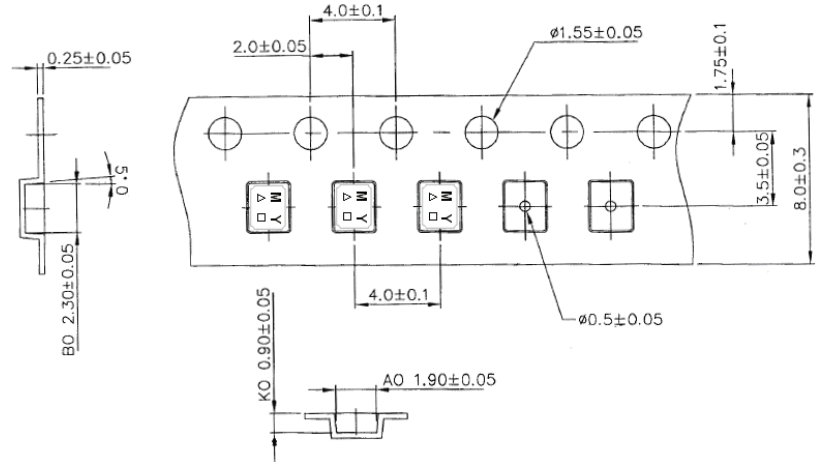


PACKAGING: 3000 Units/Reel “-T2” parts (2k/reel) are no longer available effective 01/01/2013

Reel Dimensions



Tape Dimensions



ATTENTION: Abracon LLC's products are COTS – Commercial-Off-The-Shelf products; suitable for Commercial, Industrial and, where designated, Automotive Applications. Abracon's products are not specifically designed for Military, Aviation, Aerospace, Life-dependant Medical applications or any application requiring high reliability where component failure could result in loss of life and/or property. For applications requiring high reliability and/or presenting an extreme operating environment, written consent and authorization from Abracon LLC is required. Please contact Abracon LLC for more information.



1501 Hidden Creek Lane Spicewood TX 78751
 Phone: 949-546-8000 | Fax: 949-546-8001
 For terms and conditions of sales visit:
www.abracon.com

REVISED: 07/11/2018

ABRACON IS
 ISO9001-2015
 CERTIFIED