



Chipsmall Limited consists of a professional team with an average of over 10 year of expertise in the distribution of electronic components. Based in Hongkong, we have already established firm and mutual-benefit business relationships with customers from,Europe,America and south Asia,supplying obsolete and hard-to-find components to meet their specific needs.

With the principle of "Quality Parts,Customers Priority,Honest Operation,and Considerate Service",our business mainly focus on the distribution of electronic components. Line cards we deal with include Microchip,ALPS,ROHM,Xilinx,Pulse,ON,Everlight and Freescale. Main products comprise IC,Modules,Potentiometer,IC Socket,Relay,Connector.Our parts cover such applications as commercial,industrial, and automotives areas.

We are looking forward to setting up business relationship with you and hope to provide you with the best service and solution. Let us make a better world for our industry!



Contact us

Tel: +86-755-8981 8866 Fax: +86-755-8427 6832

Email & Skype: info@chipsmall.com Web: www.chipsmall.com

Address: A1208, Overseas Decoration Building, #122 Zhenhua RD., Futian, Shenzhen, China



SMD 390.0 MHz SAW FILTER

AFS390E

APPLICATION: Radio



5 x 5 x 1.5mm

STANDARD SPECIFICATIONS:

| CHARACTERISTICS | UNIT | MIN. | TYP. | MAX. |
|---|--------|-----------------|---------|---------|
| Center Frequency F_c | MHz | 389.920 | 390.000 | 390.080 |
| Bandwidth | kHz | 500 | - | 800 |
| Insertion Loss @ Passband | dB | - | 1.7 | 3.0 |
| Ripple @ Passband | dB | - | - | - |
| Relative Attenuation | | | | |
| - 21.4Mhz | dB | 40 | 50 | - |
| - 10.7MHz | dB | 15 | 40 | - |
| F where $10M < F < F_c - 21.4M$ $F_c + 21.4 < F < 1000M$ | dB | 30 | 80 | - |
| DC Voltage | V | 10 | | |
| AC Voltage | V | 10V(50Hz/60Hz) | | |
| Source Power | dBm | 0 | | |
| Operating Temperature | °C | -35°C to +50°C | | |
| Storage Temperature | °C | - 35°C to +85°C | | |
| Frequency aging | ppm/yr | | < ±10 | |
| External impedance | nH | | 43 | |
| Series inductance L | | | | |
| Shunt capacitance C | pF | | 5.6 | |

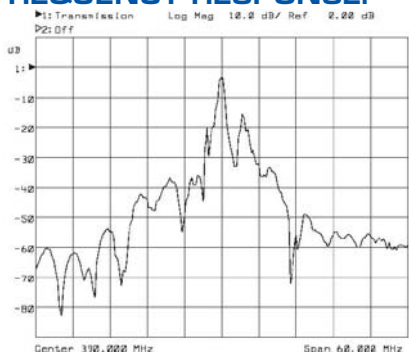
Electrostatic Sensitive Device. Handle with precaution.

MARKING:

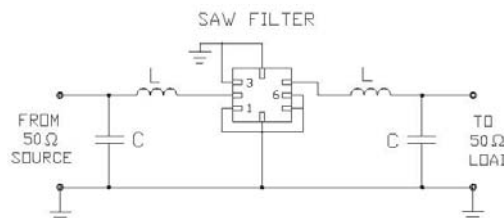
- 390.00 (390 Frequency in MHz)
- AF ZYX (ZY: Date code Z for month from A to L; Y for year, i.e. 4 for 2004
X: Traceability code)

| PIN NO. | CONNECTIONS |
|------------|-------------|
| 2 | Input |
| 5 | Output |
| All Others | Ground |

FREQUENCY RESPONSE:

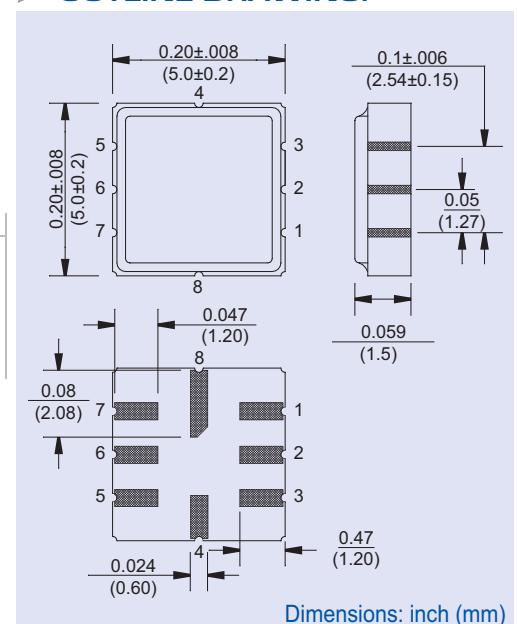


TEST CIRCUIT:



Please refer to ABRACON's Chip Inductor Series AISC-0603 for test inductors.

OUTLINE DRAWING:



Dimensions: inch (mm)