



Chipsmall Limited consists of a professional team with an average of over 10 year of expertise in the distribution of electronic components. Based in Hongkong, we have already established firm and mutual-benefit business relationships with customers from,Europe,America and south Asia,supplying obsolete and hard-to-find components to meet their specific needs.

With the principle of “Quality Parts,Customers Priority,Honest Operation,and Considerate Service”,our business mainly focus on the distribution of electronic components. Line cards we deal with include Microchip,ALPS,ROHM,Xilinx,Pulse,ON,Everlight and Freescale. Main products comprise IC,Modules,Potentiometer,IC Socket,Relay,Connector.Our parts cover such applications as commercial,industrial, and automotives areas.

We are looking forward to setting up business relationship with you and hope to provide you with the best service and solution. Let us make a better world for our industry!



Contact us

Tel: +86-755-8981 8866 Fax: +86-755-8427 6832

Email & Skype: info@chipsmall.com Web: www.chipsmall.com

Address: A1208, Overseas Decoration Building, #122 Zhenhua RD., Futian, Shenzhen, China



SMD 869.0 MHz SAW FILTER

AFS869S3

APPLICATION: Automotive Electronics/Remote Control



3.8 x 3.8 x 1.5mm

STANDARD SPECIFICATIONS:

CHARACTERISTICS	UNIT	MIN.	TYP.	MAX.
Center Frequency Fc	MHz	-	869.000	-
Bandwidth	MHz	-	Fc \pm 4.0	-
Insertion Loss @ Passband	dB	-	-	4.5
Ripple @ Passband	dB	-	-	1.5
Relative Attenuation				
825.0 ~828.0 MHz	dB	40	-	-
846.0 ~849.0 MHz	dB	35	-	-
889.0 ~892.0 MHz	dB	35	-	-
910.0 ~ 913.0 MHz	dB	40	-	-
DC Voltage	V	10		
Source Power	dBm	10		
Operating Temperature	°C	-30°C to +80°C		
Storage Temperature	°C	-40°C to +85°C		
Terminating Impedance	-	50 Ω /0 pF		

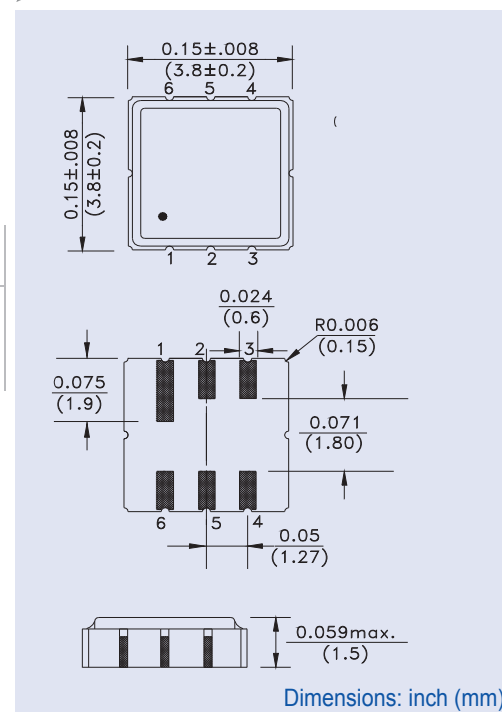
Electrostatic Sensitive Device. Handle with precaution.

MARKING:

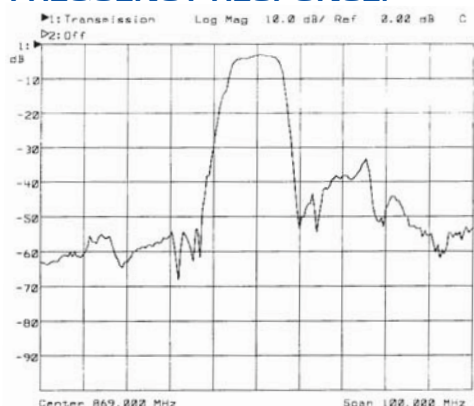
- 869F (869.0 Frequency in MHz)
- AZYX (ZY: Date code Z for month from A to L; Y for year, i.e. 4 for 2004 X: Traceability code)

PIN NO.	CONNECTIONS
2	Input
5	Output
Others	Ground

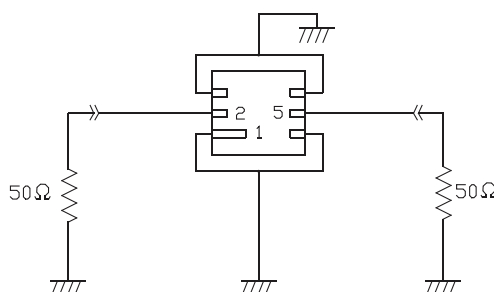
OUTLINE DRAWING:



FREQUENCY RESPONSE:



TEST CIRCUIT:



ATTENTION: Abracon Corporation's products are COTS – Commercial-Off-The-Shelf products; suitable for Commercial, Industrial and, where designated, Automotive Applications. Abracon's products are not specifically designed for Military, Aviation, Aerospace, Life-dependant Medical applications or any application requiring high reliability where component failure could result in loss of life and/or property. For applications requiring high reliability and/or presenting an extreme operating environment, written consent and authorization from Abracon Corporation is required. Please contact Abracon Corporation for more information.

ABRACON IS
ISO 9001:2008
CERTIFIED



30332 Esperanza, Rancho Santa Margarita, California 92688
tel 949-546-8000 | fax 949-546-8001 | www.abracon.com