



Chipsmall Limited consists of a professional team with an average of over 10 year of expertise in the distribution of electronic components. Based in Hongkong, we have already established firm and mutual-benefit business relationships with customers from,Europe,America and south Asia,supplying obsolete and hard-to-find components to meet their specific needs.

With the principle of “Quality Parts,Customers Priority,Honest Operation,and Considerate Service”,our business mainly focus on the distribution of electronic components. Line cards we deal with include Microchip,ALPS,ROHM,Xilinx,Pulse,ON,Everlight and Freescale. Main products comprise IC,Modules,Potentiometer,IC Socket,Relay,Connector.Our parts cover such applications as commercial,industrial, and automotives areas.

We are looking forward to setting up business relationship with you and hope to provide you with the best service and solution. Let us make a better world for our industry!



Contact us

Tel: +86-755-8981 8866 Fax: +86-755-8427 6832

Email & Skype: info@chipsmall.com Web: www.chipsmall.com

Address: A1208, Overseas Decoration Building, #122 Zhenhua RD., Futian, Shenzhen, China



SMD 915.0MHz SAW FILTER

AFS915.0W03-TS3



RoHS
Compliant



3.8 x 3.8 x 1.5mm

FEATURES:

- 3.8 x 3.8 x 1.5mm SMD package
- Low pass band insertion loss 3.3dB
- Input/output 50ohm terminated
- Low amplitude ripple 1.5dB

APPLICATIONS:

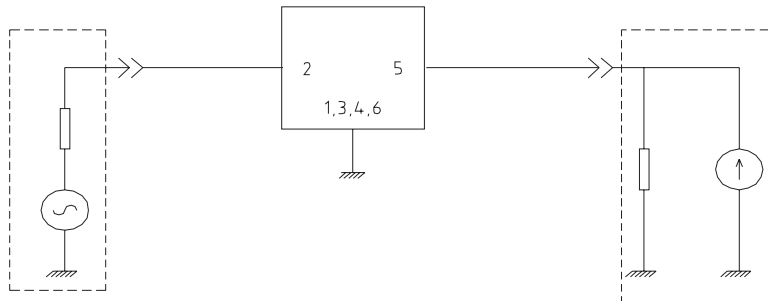
- CDMA450
- RF SAW filter for Telecommunication
- PDA
- Remote controller

STANDARD SPECIFICATIONS:

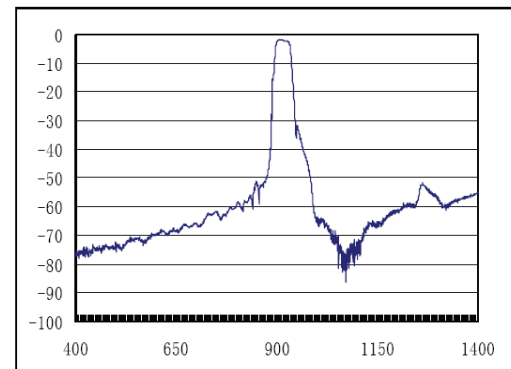
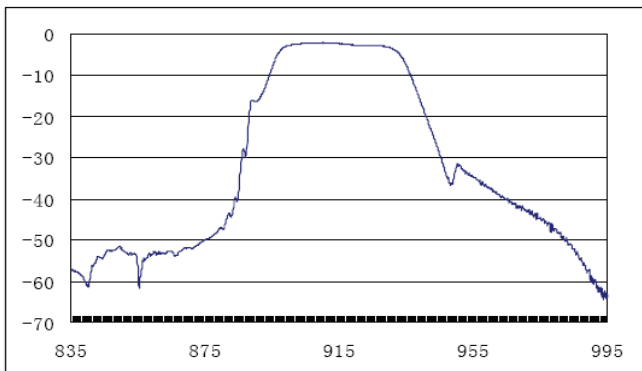
ABRACON P/N: **AFS915.0W03-TS3**
 Operating temperature: **0°C to +70°C**
 Storage temperature: **-40°C to +85°C**
 DC Permissive Voltage : **10 Vdc max.**
 Maximum Input Power : **10 dBm**

Item	Frequency	Specification
Center Frequency (f_0)	915.0 MHz	
Passband Width	± 13.0 MHz	
Insertion Loss	902~928	3.3 dB max.
Amplitude Ripple	902~928	1.5 dB max.
Relative Attenuation	10.0~700.0	50 dB min.
	700.0~845.0	45 dB min.
	845.0~880.0	35 dB min.
	947.0~992.0	15 dB min.
	992.0~1020.0	35 dB min.
Temperature Coefficient of Frequency		-30ppm/k
Terminating Impedance		50 Ω /0nF.

TEST CIRCUIT:



FREQUENCY CHARACTERISTICS



SMD 915.0MHz SAW FILTER

AFS915.0W03-TS3

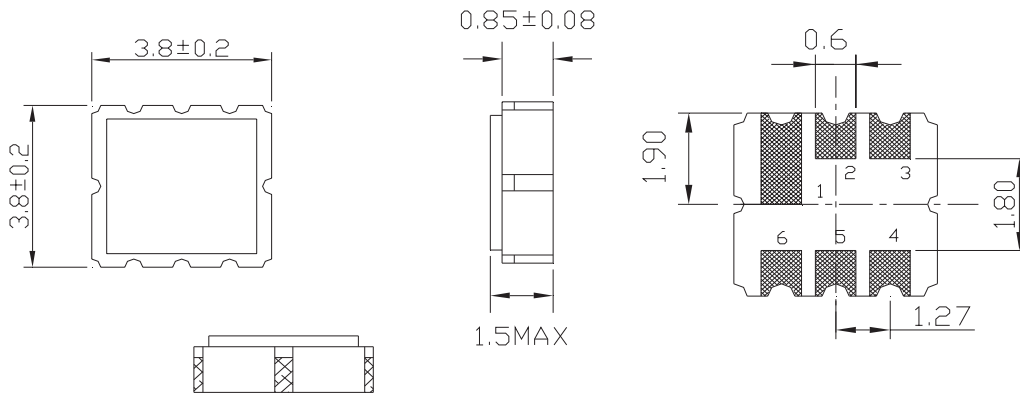


RoHS
Compliant



3.8 x 3.8 x 1.5mm

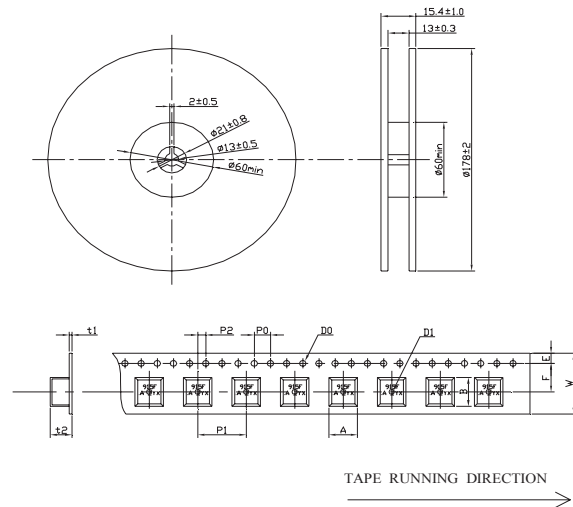
OUTLINE DIMENSIONS:



pin	Function
2	Input
5	Output
Other	Ground

Dimension : mm

TAPE & REEL: T= tape and reel (1,000pcs/reel)



W	F	E	P0	P1	P2
12	5.5	1.75	4	8	2
± 0.1	± 0.1	± 0.1	± 0.1	± 0.1	± 0.1
D0	D1	t1	t2	A	B
Φ 1.5	Φ 1.5	0.31	1.9	4.1	4.1
± 0.1	± 0.25	max.	max.	max.	max.

REEL DIMENSION

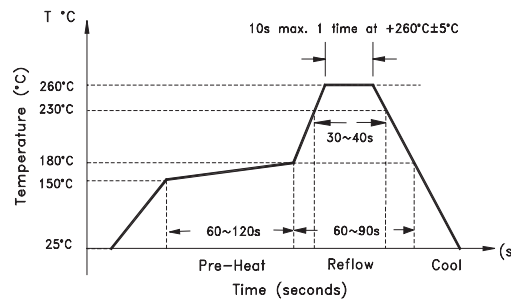
Tensile Strength of carrier tape: 4.4N/mm width.

Top Cover Tape Adhesion

- 1) pull angle: 0~15°
- 2) speed: 300mm/min.
- 3) force 20~70g

Dimension : mm

REFLOW PROFILE:



ATTENTION: Abracon Corporation's products are COTS – Commercial-Off-The-Shelf products; suitable for Commercial, Industrial and, where designated, Automotive Applications. Abracon's products are not specifically designed for Military, Aviation, Aerospace, Life-dependant Medical applications or any application requiring high reliability where component failure could result in loss of life and/or property. For applications requiring high reliability and/or presenting an extreme operating environment, written consent and authorization from Abracon Corporation is required. Please contact Abracon Corporation for more information.

ABRACON IS
ISO 9001:2008
CERTIFIED



Visit www.abracon.com for Terms & Conditions of Sale
30332 Esperanza, Rancho Santa Margarita, California 92688
tel 949-546-8000 | fax 949-546-8001 | www.abracon.com

Revised: 11.07.11