



Chipsmall Limited consists of a professional team with an average of over 10 year of expertise in the distribution of electronic components. Based in Hongkong, we have already established firm and mutual-benefit business relationships with customers from,Europe,America and south Asia,supplying obsolete and hard-to-find components to meet their specific needs.

With the principle of “Quality Parts,Customers Priority,Honest Operation,and Considerate Service”,our business mainly focus on the distribution of electronic components. Line cards we deal with include Microchip,ALPS,ROHM,Xilinx,Pulse,ON,Everlight and Freescale. Main products comprise IC,Modules,Potentiometer,IC Socket,Relay,Connector.Our parts cover such applications as commercial,industrial, and automotives areas.

We are looking forward to setting up business relationship with you and hope to provide you with the best service and solution. Let us make a better world for our industry!



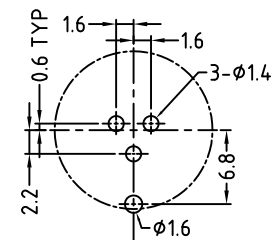
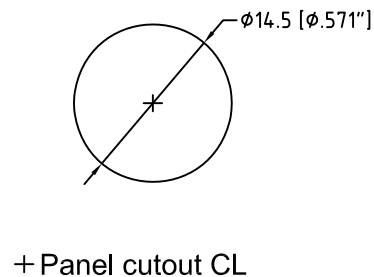
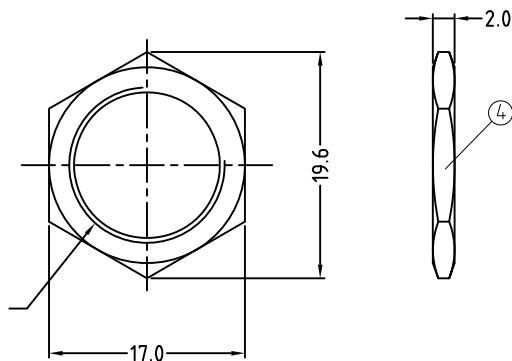
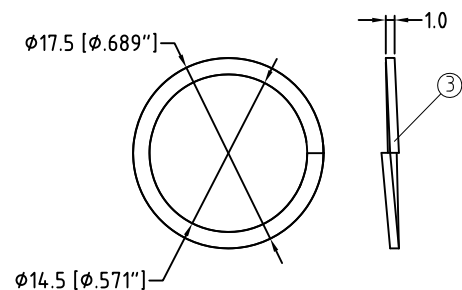
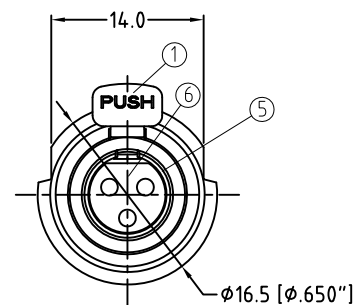
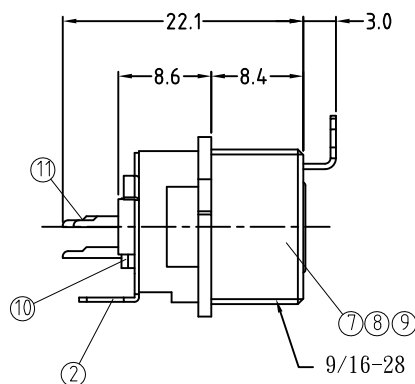
Contact us

Tel: +86-755-8981 8866 Fax: +86-755-8427 6832

Email & Skype: info@chipsmall.com Web: www.chipsmall.com


Address: A1208, Overseas Decoration Building, #122 Zhenhua RD., Futian, Shenzhen, China





11	SOCKET CONTACTS	Brass/Au Plated	3
10	SPRING WASHER	PPS/Black	1
9	SPRING	SUS 304/Ni Plated	1
8	LATCH SPRING	SUS 304/Ni Plated	1
7	MACHINED SHELL	Brass/Ni Plated	1
6	INSULATOR	PPS/Black	1
5	MACHINED SHELL	Brass/Ni Plated	1
4	METAL NUT	Brass/Ni Plated	1
3	SPRING WASHER	SUS 304/Ni Plated	1
2	GOUND CONTACT	Brass/Ni Plated	1
1	PUSH LEVEL	Brass/Ni Plated	1
ITEM	DESCRIPTION	MATERIAL/FINISH	QTY

Lifetime: Insert & withdraw >5000 cycle
Insertion/withdrawal 6lb Max.

UNLESS OTHERWISE SPECIFIED TOLERANCE TO BE		THIS DOCUMENT IS THE PROPERTY OF AMPHENOL AUSTRALIA PTY. LTD. NO PART THEREOF MAY BE REPRODUCED AND USED WITHOUT THE PRIOR WRITTEN CONSENT OF THE OWNER				0	FIRST ISSUE	M.H	09-10-12	----
LINEAR	ANGULAR					REV.	CHANGE DETAILS	BY	DATE	CHG/No
X ± 0.50 X.X ± 0.25 X.XX ± 0.10	X' ± 1' X'X' ± 15" X'X'X' ± 1"	CAD FILE: 5501086100011	DRN: M.H	DATE: 09-10-12	TITLE:		<div>Amphenol</div> <div>22 Industry Boulevard, Carrum Downs, Vic 3207</div> <div>DRAWING NO. 55010861-000-1</div> <div>SHEET 1 OF 1</div>			
BREAK ALL SHARP EDGES AND REMOVE ALL BURRS		MATL: SEE TABLE	CKD: M.H	DATE: 25-07-17	<div>MINI XLR FEMALE RECEPTACLE CUSTOMER DWG</div>					
DO NOT SCALE		FINISH: SEE TABLE	APP'D: P.M	DATE: 25-07-17						
DIMENSIONS IN MILLIMETRES		 THIRD ANGLE PROJECTION		SCALE: 2:1 UOS						

