



Chipsmall Limited consists of a professional team with an average of over 10 year of expertise in the distribution of electronic components. Based in Hongkong, we have already established firm and mutual-benefit business relationships with customers from,Europe,America and south Asia,supplying obsolete and hard-to-find components to meet their specific needs.

With the principle of “Quality Parts,Customers Priority,Honest Operation,and Considerate Service”,our business mainly focus on the distribution of electronic components. Line cards we deal with include Microchip,ALPS,ROHM,Xilinx,Pulse,ON,Everlight and Freescale. Main products comprise IC,Modules,Potentiometer,IC Socket,Relay,Connector.Our parts cover such applications as commercial,industrial, and automotives areas.

We are looking forward to setting up business relationship with you and hope to provide you with the best service and solution. Let us make a better world for our industry!



Contact us

Tel: +86-755-8981 8866 Fax: +86-755-8427 6832

Email & Skype: info@chipsmall.com Web: www.chipsmall.com

Address: A1208, Overseas Decoration Building, #122 Zhenhua RD., Futian, Shenzhen, China



1

2

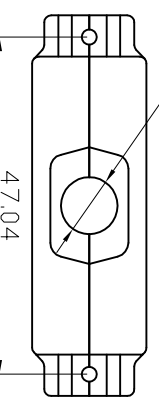
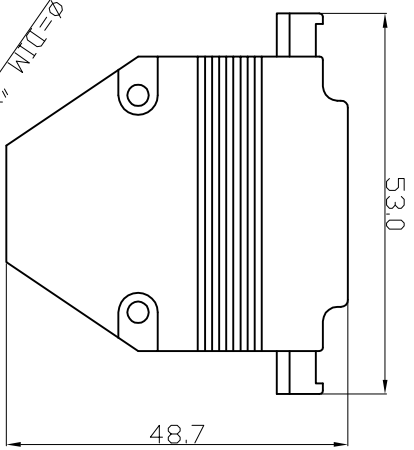
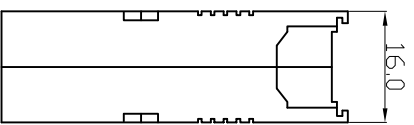
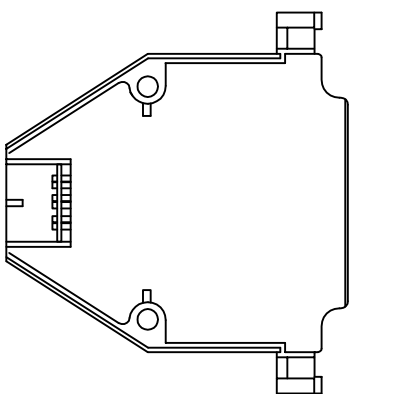
3

4

5

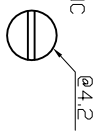
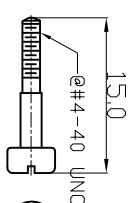
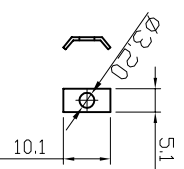
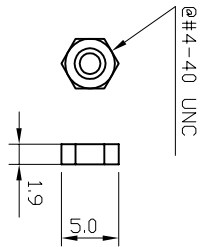
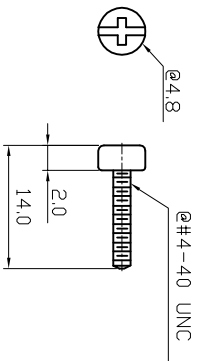
6

7



- NOTE:
1. MATERIAL: zinc alloy
 2. FINISHED: chromate plated
 3. Contact No.: 25 Poles
 4. CABLE ENTRY SIZE: DIMENSION OF "X" = 10.0mm
 5. PARTS OPTION: SHORT SCREW

AGP 25 G-METALL



RoHS compliant

Scale	1:1		
TOLERANCE			
X.	±0.5		
X.X	±0.3		
X.XX	±0.2		
DIM	TOL		
Angle	±5°		
		①	Drawn
		②	Update
		③	Modify dimension X
		④	Add the 50 poles
			Winnie
			09.01.2015
			Drawn
			07.12.2007
			Ken
			07.12.2007
			Ken
			03.11.2009
			Dean
			25.11.2009
			Dean
			09.01.2015
			Winnie
			09.01.2015
			Winnie

Customer-No.

ASSMANN WSW-No.

AGP XX G-METALL

Drawing-No.

ASS 0464 CO

rev04

Replace

Sheet 3/5

1

2

3

4

5

6

7

H

G

H

E

D

C

B

A

1

2

3

4

5

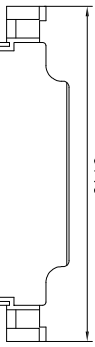
6

7

A



19.7

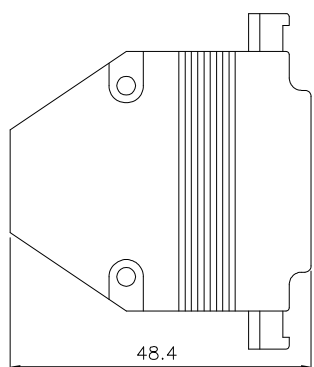
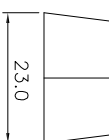
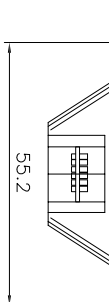


- NOTE:**
1. MATERIAL: zinc alloy
 2. FINISHED: chromate plated
 3. Contact No. : 50 Poles
 4. CABLE ENTRY SIZE: DIMENSION OF "X" = 14.5mm

B

DIMENSION OF "X" = 14.5mm

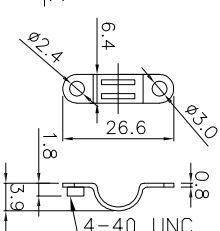
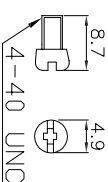
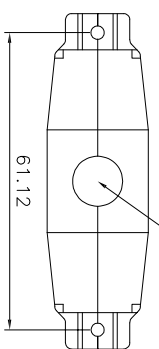
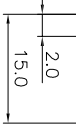
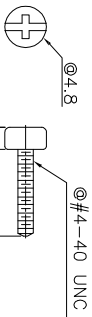
C



AGP 50 G-METALL

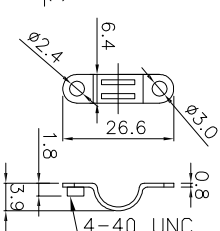
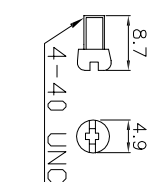
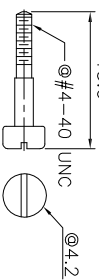
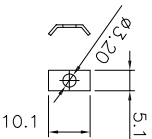
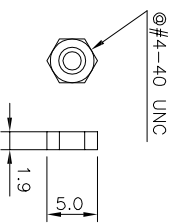
C

D



D

E



E

F

RoHS compliant

F

G

Scale	1:1
TOLERANCE	
X.	±0.5
X.X	±0.3
X.XX	±0.2
DIM	TOL
Angle	±5°

Customer-No.

ASSMANN WSW-No.

AGP XX G-METALL

G

H

Drawing-No.

ASS 0464 CO

rev04

H

ASSMANN
WSW/ components

Replace

Sheet
5/5

RoHS compliant

1

2

3

4

5

6

7

Scale	1:1
TOLERANCE	
X.	±0.5
X.X	±0.3
X.XX	±0.2
DIM	TOL
Angle	±5°

Id.	Modification	Date	Name
④	Add the 50 poles	09.01.2015	Winnie
③	Modify dimension X	25.11.2009	Dean
②	Update	03.11.2009	Dean
①	Drawn	07.12.2007	Ken

Date	Name
07.12.2007	Ken
09.01.2015	Winnie

Date	Name
07.12.2007	Ken
09.01.2015	Winnie

Customer-No.	ASSMANN WSW-No.	Drawing-No.	Replace
		ASS 0464 CO	
		rev04	