



Chipsmall Limited consists of a professional team with an average of over 10 year of expertise in the distribution of electronic components. Based in Hongkong, we have already established firm and mutual-benefit business relationships with customers from,Europe,America and south Asia,supplying obsolete and hard-to-find components to meet their specific needs.

With the principle of “Quality Parts,Customers Priority,Honest Operation,and Considerate Service”,our business mainly focus on the distribution of electronic components. Line cards we deal with include Microchip,ALPS,ROHM,Xilinx,Pulse,ON,Everlight and Freescale. Main products comprise IC,Modules,Potentiometer,IC Socket,Relay,Connector.Our parts cover such applications as commercial,industrial, and automotives areas.

We are looking forward to setting up business relationship with you and hope to provide you with the best service and solution. Let us make a better world for our industry!



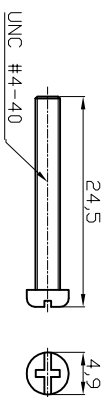
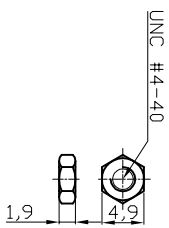
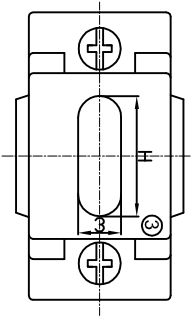
## Contact us

Tel: +86-755-8981 8866 Fax: +86-755-8427 6832

Email & Skype: info@chipsmall.com Web: www.chipsmall.com

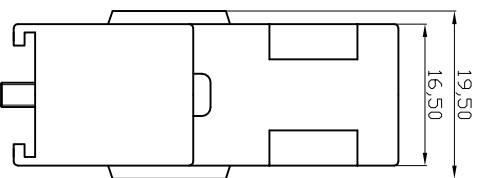
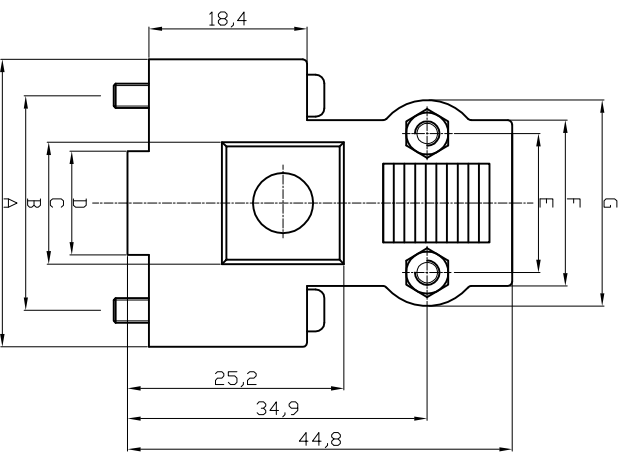
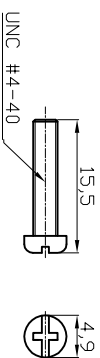
Address: A1208, Overseas Decoration Building, #122 Zhenhua RD., Futian, Shenzhen, China





NOTES:  
 ④ MATERIAL ABS UL94 HB

X= ME : Metallized  
 - : Plastic, Grey



No. of contacts	Dimensions							
	A	B	C	D	E	F	G	H
09	33.5	25.0	14.2	12.1	16.2	19.3	24.0	9.7
15	41.2	33.3	21.5	16.1	23.0	28.1	33.0	21.6
25	54.5	47.1	35.1	29.9	35.8	41.5	46.2	34.3
37	71.5	63.5	51.1	46.0	53.0	58.0	63.0	51.0

**RoHS compliant**

Scale	1:1
TOLERANCE	
X.X	±0.38
X.XX	±0.25
X.XXX	±0.15
DIM	TOL
X.°	±2°
X.X°	±1°
Angle	TOL

④	Add "UL 94 HB"	01.11.2016	Winnie	Approved	01.11.2016	Winnie
③	Add spec	30.04.2014	Joanna			
②	Corrected material	14.12.2010	Dean			
①	Drawn	10.12.2008	Dean			
	Modification			Date	Name	

Drawn	10.12.2008	Dean
Approved	01.11.2016	Winnie

**ASSMANN**  
 WSW/ components

ASSMANN WSW-No.  
**AGP-xx/IDC-X**

ASS 3203 CO rev04

Replace

Sheet

1 2 3 4 5 6 7

A B C D E F G H