



Chipsmall Limited consists of a professional team with an average of over 10 year of expertise in the distribution of electronic components. Based in Hongkong, we have already established firm and mutual-benefit business relationships with customers from,Europe,America and south Asia,supplying obsolete and hard-to-find components to meet their specific needs.

With the principle of “Quality Parts,Customers Priority,Honest Operation,and Considerate Service”,our business mainly focus on the distribution of electronic components. Line cards we deal with include Microchip,ALPS,ROHM,Xilinx,Pulse,ON,Everlight and Freescale. Main products comprise IC,Modules,Potentiometer,IC Socket,Relay,Connector.Our parts cover such applications as commercial,industrial, and automotives areas.

We are looking forward to setting up business relationship with you and hope to provide you with the best service and solution. Let us make a better world for our industry!



Contact us

Tel: +86-755-8981 8866 Fax: +86-755-8427 6832

Email & Skype: info@chipsmall.com Web: www.chipsmall.com

Address: A1208, Overseas Decoration Building, #122 Zhenhua RD., Futian, Shenzhen, China



1

2

3

4

5

6

7

A

A

B

B

C

C

D

D

E

E

F

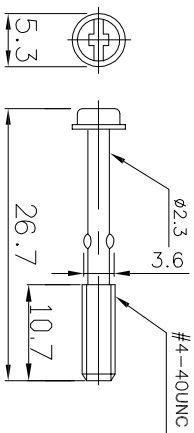
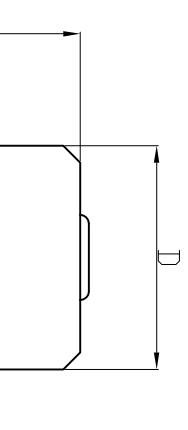
F

G

G

H

H

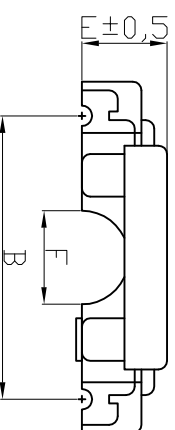
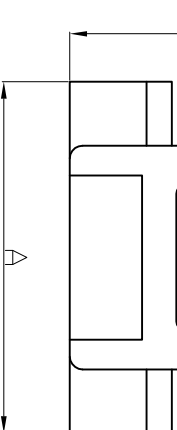


⑤ 09, 15, 25, 37, 50 Pin

The hood consists of two pieces with straight cable entry. The strain relief is inside. After assembly the screws with UNC4-40 thread are secured.

No. of contacts
09, 15, 25, 37, 50

Suitable knurled screws
AGP-RS/G
1Set=2pieces



No. of contacts	Dimensions					
	A	B	C	D	E	F
09	33.0	25.0	45.0	18.0	10.0	7
15	41.3	33.3	45.0	26.3	10.5	10
25	50.0	47.0	45.0	40.0	10.4	10
37	72.5	63.5	45.0	56.5	10.5	14
50	69.5	61.4	44.7	54.3	9.6	14

④ **Material**
ABS

Delivery includes

- 2 half-sheets
- 2 fixing screws
- 4 screws
- 2 strain relief bow
- 2 nuts

RoHS compliant

Scale	1:1
TOLERANCE	
X.X	±0.50
X.XX	±0.30
X.XXX	±0.20
DIM	TOL
X.°	±5°
X.X°	±X°
Angle	TOL

⑥	Correct Dim C	30.6.2016	Winnie
③	Add the screw dimension	17.09.2013	Winnie
④	Corrected material	14.12.2010	Dean
③	Added 50 poles	28.12.2009	Dean
②	Zeichnung überarbeitet	09.07.2007	N.Schulz
①	Drawn	12.01.2005	Ken
	Modification	Date	Name

⑥	Date	Name
Drawn	12.01.2005	Ken
Approved	30.06.2016	Winnie

ASSMANN
WSW/ components

Customer-No.	ASSMANN WSW-No.	AGP XX G
Drawing-No.	ASS 0293 CO	rev06
Replace		Sheet

1

2

3

4

5

6

7