



Chipsmall Limited consists of a professional team with an average of over 10 year of expertise in the distribution of electronic components. Based in Hongkong, we have already established firm and mutual-benefit business relationships with customers from,Europe,America and south Asia,supplying obsolete and hard-to-find components to meet their specific needs.

With the principle of “Quality Parts,Customers Priority,Honest Operation,and Considerate Service”,our business mainly focus on the distribution of electronic components. Line cards we deal with include Microchip,ALPS,ROHM,Xilinx,Pulse,ON,Everlight and Freescale. Main products comprise IC,Modules,Potentiometer,IC Socket,Relay,Connector.Our parts cover such applications as commercial,industrial, and automotives areas.

We are looking forward to setting up business relationship with you and hope to provide you with the best service and solution. Let us make a better world for our industry!



Contact us

Tel: +86-755-8981 8866 Fax: +86-755-8427 6832

Email & Skype: info@chipsmall.com Web: www.chipsmall.com

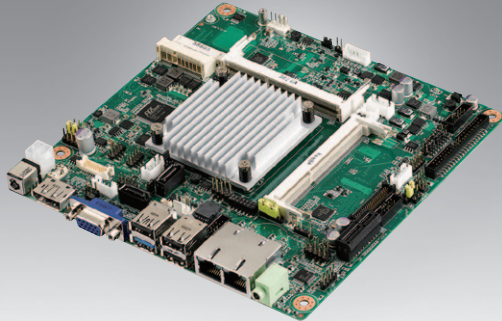
Address: A1208, Overseas Decoration Building, #122 Zhenhua RD., Futian, Shenzhen, China



AIMB-215

Intel® Celeron® Quad Core J1900/N2930/N2807 Mini-ITX with CRT/LVDS/DP++, 6 COM, and Dual LAN

NEW



susIAccess

Features

- Supports Intel Celeron Quad Core J1900/N2930/N2807 processor
- Two 204-pin SO-DIMM up to 8 GB DDR3L 1333 MHz SDRAM
- Supports VGA/DP1.2 /24-bit dual channel LVDS
- Supports 1 PCIe x1 and 2 mini-PCIe expansion slot, 6 COMs, 9 USB 2.0, and 1 USB 3.0
- Lower total cost of ownership with DC12V support and onboard TPM1.2(optional)
- Supports susIAccess and Embedded Software APIs

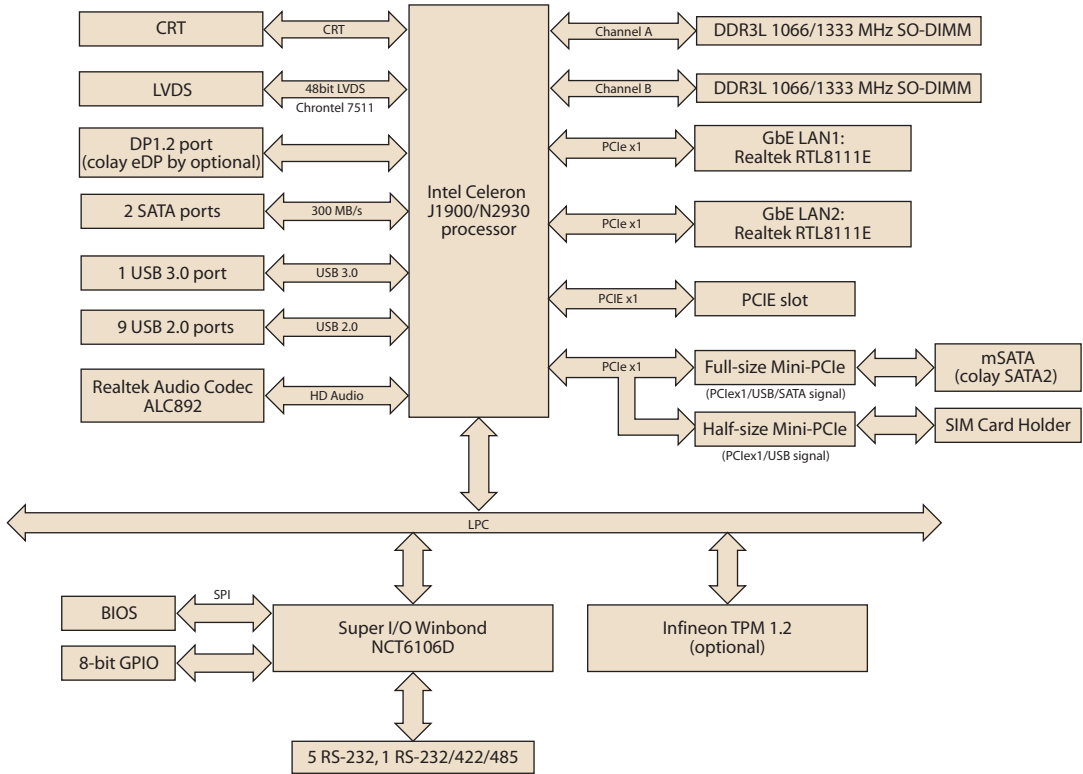
Software APIs:
H/W Monitor Brightness Watchdog GPIO

Utilities:
BIOS flash Monitoring

Specifications

		Intel J1900	Intel N2930	Intel N2807
Processor System	CPU (32nm)	Intel J1900	Intel N2930	Intel N2807
	Max. Speed	2.0 GHz (Quad core)	1.83 GHz (Quad core)	1.58 GHz (Dual core)
	L2 Cache	2 MB	2 MB	1 MB
	BIOS	AMI 16 Mbit SPI	AMI 16 Mbit SPI	AMI 16 Mbit SPI
Expansion Slot	PCI	-		
	Mini-PCIe	2 (F/S x 1 support mSATA, H/S x 1 with SIM card holder)		
Memory	PCIe	PCI Express x1 (Gen2)		
	Technology	Dual channel DDR3L 1066/1333 MHz SDRAM		
	Max. Capacity	8 GB/4 GB per SO-DIMM		
Graphics	Socket	2 x 204-pin SO-DIMM (Non-ECC)		
	Controller	Intel Gen 7 Graphics Engines and media encode/decode engine; GPU Frequency: 688 MHz for J1900; 313 MHz for N2930		
	VRAM	Shared system memory up to 224 MB SDRAM		
	VGA	Supports up to 2560 x 1600		
Ethernet	LVDS	Supports dual channel 48-bit up to 1920 x 1200		
	Display Port 1.2	1, Supports DP++, resolution up to 2560 x 1600 colay eDP port (optional)		
	Dual Display	VGA+DP1.2, VGA+LVDS, LVDS+DP1.2, VGA+eDP (optional), LVDS+eDP (optional), Supports extended mode and clone mode		
SATA	Interface	10/100/1000 Mbps		
	Controller	GbE LAN1: Realtek 8111E GbE LAN2: Realtek 8111E		
Rear I/O	Connector	RJ-45 x 2		
	Max Data Transfer Rate	300 MB/s		
Internal Connector	Channel	2, SATA 2 colay mSATA (optional); SATA 1 support SATA-DOM device		
	CRT	1		
	DP1.2	1		
	Ethernet	2		
	USB	4 (3 x USB 2.0/1 x USB 3.0)		
	Audio	1 (Mic-in or Line out)		
	DC jack	1 (2.5 mm)		
Watchdog Timer	LVDS & Inverter	1/1		
	eDP	1 (optional)		
	USB	6 (USB 2.0 compliant)		
	Serial	6 (5 x RS-232, 1 x RS-232/422/485; COM 3 support RS-232/422/485 auto flow control; COM 6 support 5V/12V by jumper selection)		
	IDE	None		
	SATA	2		
	SATA PWR Connector	2		
	Parallel	None		
Power	GPIO	8-bit		
	PS/2 KB & MS	1		
Environment	Output	System reset		
	Interval	Programmable 1 ~ 255 sec/min		
Physical Characteristics	Power Type	Single voltage 12V DC input; 1 x External DC jack; 1 x Internal 4-pin (2x2) power connector; Supports AT/ATX mode		
	Typical Power Consumption	Win Idle 10.17 W (Intel Celeron J1900 2.0 GHz / DDR3L 1600 MHz 4GB x 2)	Non-Operating	
Physical Characteristics	Operating	0 ~ 60° C (32 ~ 140° F) with 0.7m/s air flow	-40 ~ 85° C (-40 ~ 185° F)	
	Temperature			
Physical Characteristics	Dimensions	170 mm x 170 mm (6.69" x 6.69")		

Block Diagram



Ordering Information

Part Number	CPU	Memory	DP++/eDP	CRT	LVDS	GbE LAN	COM	SATA II	USB3.0/2.0	MiniPCle	TPM	AMP	PClex1	Thermal Solution
AIMB-215D-S6A1E	J1900	2	1 (1)	1	1	2	6	2	1/9	2 (1 x F/S; 1 x H/S)	(1)	(2 x 6W)	1	Passive
AIMB-215N-S6A1E	N2930	2	1 (1)	1	1	2	6	2	1/9	2 (1 x F/S; 1 x H/S)	(1)	(2 x 6W)	1	Passive
AIMB-215U-S6A1E	N2807	1	1 (1)	1	0	1	2	1	1/3	1 x F/S (PCle/SATA signal only)	(1)	(2 x 6W)	1	Passive
AIMB-215L-S6A1E	J1900	2	1 (1)	1	0	1	2	1	1/3	1 x F/S (PCle/SATA signal only)	(1)	(2 x 6W)	1	Passive

Note: Passive = fanless
 * () BOM options available on MP version

Packing List

Part Number	Description	Quantity
1700003194	SATA HDD cable	1
1700018785	SATA power cable	1
1700008876	1-to-4 serial ports cable kit, 35 cm	1
1700100250	1-to-1 serial port cable, 25 cm	2
1920000569T000	I/O port bracket	1
2006021500	Startup manual	1
2066021500	Driver CD	1
1960064228N001	Fanless heatsink	1

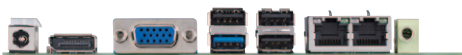
Optional Accessories

Part Number	Description
1757003995	Adapter AC100-240V 60W +12V/5A
1757003064	Adaptor AC100-240V 84W, 12V/7A
1703060191	KBMS cable 1*6P-2.5/DIN-6P(F)*2, 25 cm
1700022989-01	A Cable USB-A(F)*2/2*5P-2.0 25CM

Optional Chassis

Part Number	Description
AIMB-B2000-00YE	Mini-ITX chassis with optional DC Adaptor

I/O View



Embedded OS/API

OS/API	Part No.	Description
WES8	TBD	Windows Embedded 8
WES7	TBD	Windows Embedded 7