



Chipsmall Limited consists of a professional team with an average of over 10 year of expertise in the distribution of electronic components. Based in Hongkong, we have already established firm and mutual-benefit business relationships with customers from,Europe,America and south Asia,supplying obsolete and hard-to-find components to meet their specific needs.

With the principle of “Quality Parts,Customers Priority,Honest Operation,and Considerate Service”,our business mainly focus on the distribution of electronic components. Line cards we deal with include Microchip,ALPS,ROHM,Xilinx,Pulse,ON,Everlight and Freescale. Main products comprise IC,Modules,Potentiometer,IC Socket,Relay,Connector.Our parts cover such applications as commercial,industrial, and automotives areas.

We are looking forward to setting up business relationship with you and hope to provide you with the best service and solution. Let us make a better world for our industry!



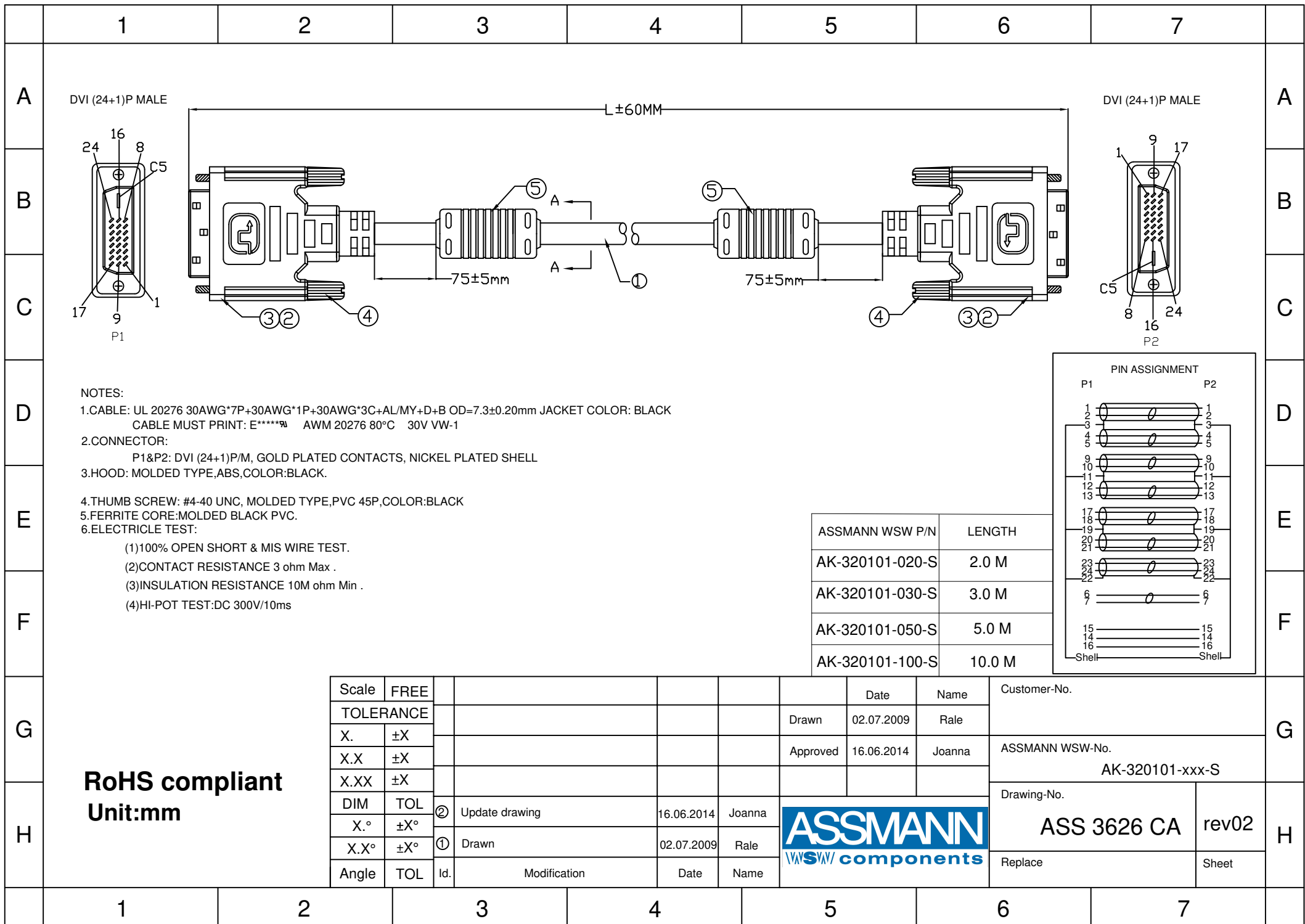
Contact us

Tel: +86-755-8981 8866 Fax: +86-755-8427 6832

Email & Skype: info@chipsmall.com Web: www.chipsmall.com

Address: A1208, Overseas Decoration Building, #122 Zhenhua RD., Futian, Shenzhen, China



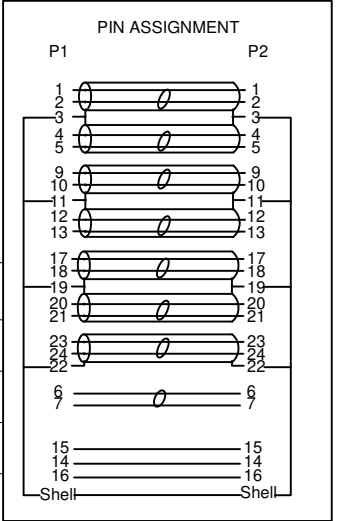


NOTES:

- 1. CABLE: UL 20276 30AWG*7P+30AWG*1P+30AWG*3C+AL/MY+D+B OD=7.3±0.20mm JACKET COLOR: BLACK
CABLE MUST PRINT: E***** AWM 20276 80°C 30V VW-1
- 2. CONNECTOR:
P1&P2: DVI (24+1)P/M, GOLD PLATED CONTACTS, NICKEL PLATED SHELL
- 3. HOOD: MOLDED TYPE, ABS, COLOR: BLACK.
- 4. THUMB SCREW: #4-40 UNC, MOLDED TYPE, PVC 45P, COLOR: BLACK
- 5. FERRITE CORE: MOLDED BLACK PVC.
- 6. ELECTRICAL TEST:

- (1) 100% OPEN SHORT & MIS WIRE TEST.
- (2) CONTACT RESISTANCE 3 ohm Max .
- (3) INSULATION RESISTANCE 10M ohm Min .
- (4) HI-POT TEST: DC 300V/10ms

ASSMANN WSW P/N	LENGTH
AK-320101-020-S	2.0 M
AK-320101-030-S	3.0 M
AK-320101-050-S	5.0 M
AK-320101-100-S	10.0 M



RoHS compliant
Unit:mm

Scale	FREE				Date	Name	Customer-No.
TOLERANCE					Drawn	02.07.2009	Rale
X.	±X				Approved	16.06.2014	Joanna
X.X	±X						
X.XX	±X						
DIM	TOL	②	Update drawing	16.06.2014	Joanna	ASSMANN WSW-No. AK-320101-xxx-S	
X.°	±X°					Drawing-No.	ASS 3626 CA rev02
X.X°	±X°	①	Drawn	02.07.2009	Rale	Replace	Sheet
Angle	TOL	Id.	Modification	Date	Name		

