



Chipsmall Limited consists of a professional team with an average of over 10 year of expertise in the distribution of electronic components. Based in Hongkong, we have already established firm and mutual-benefit business relationships with customers from,Europe,America and south Asia,supplying obsolete and hard-to-find components to meet their specific needs.

With the principle of “Quality Parts,Customers Priority,Honest Operation,and Considerate Service”,our business mainly focus on the distribution of electronic components. Line cards we deal with include Microchip,ALPS,ROHM,Xilinx,Pulse,ON,Everlight and Freescale. Main products comprise IC,Modules,Potentiometer,IC Socket,Relay,Connector.Our parts cover such applications as commercial,industrial, and automotives areas.

We are looking forward to setting up business relationship with you and hope to provide you with the best service and solution. Let us make a better world for our industry!



Contact us

Tel: +86-755-8981 8866 Fax: +86-755-8427 6832

Email & Skype: info@chipsmall.com Web: www.chipsmall.com

Address: A1208, Overseas Decoration Building, #122 Zhenhua RD., Futian, Shenzhen, China



1

2

3

4

5

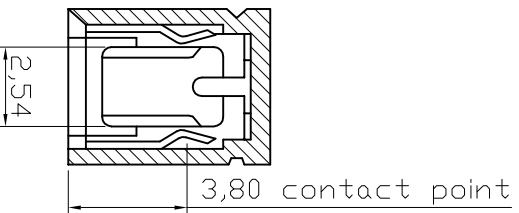
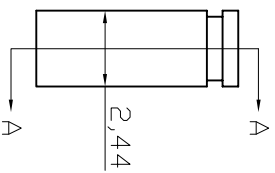
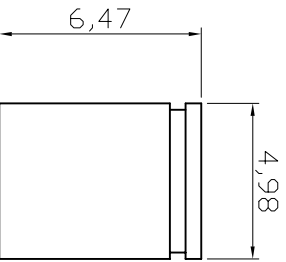
6

7

A

NOTES:

- 1. Insulation: Glass Filled PBT, UL94V-0, Color Black/Red/Blue
- 2. Contact : Phosphor Bronze
- 3. Current Rating: 3A Max
- 4. Dielectric Voltage: 1000V rms / 1 minute
- 5. Insulation Resistance: 1000M ohm Min.
- 6. Contact Resistance: 30m ohm Max.
- 7. Operating and Storage Temperature: -40°C ~ +105°C
- 8. Mating Cycles: 10 Min.

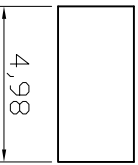


AKSCT/x x

② Insulation color:
 BLACK: Black
 BLUE: Blue
 RED: Red

④ Contact Area Plating:
 G: Gold Flash
 Z: Tinned

D



D

E

E

F

F

ROHS compliant
 Unit:mm

G

G

Scale	Free
TOLERANCE	
.X	±0.38
.XX	±0.25
.XXX	±0.13
DIM	TOL
X. °	±1°
Angle	TOL
UNIT	mm

Free	Id.	Modification	Date	Name
④ Update	④	Update	07.06.2013	Winnie
③ Update	③	Update	21.11.2012	Any
② Update	②	Update	27.07.2009	Rate
① Drawn	①	Drawn	10.04.2002	Hellwig

Date	Name
10.04.2002	Hellwig
07.06.2013	Winnie

Customer-No.	ASSMANN WSW-No.	AKSCT/G X
		AKSCT/Z X
Drawing-No.	ASS 0591 CO	rev04
Replace		SHEET

1

2

3

4

5

6

7

H

H



ASSMANN WSW components