



Chipsmall Limited consists of a professional team with an average of over 10 year of expertise in the distribution of electronic components. Based in Hongkong, we have already established firm and mutual-benefit business relationships with customers from,Europe,America and south Asia,supplying obsolete and hard-to-find components to meet their specific needs.

With the principle of “Quality Parts,Customers Priority,Honest Operation,and Considerate Service”,our business mainly focus on the distribution of electronic components. Line cards we deal with include Microchip,ALPS,ROHM,Xilinx,Pulse,ON,Everlight and Freescale. Main products comprise IC,Modules,Potentiometer,IC Socket,Relay,Connector.Our parts cover such applications as commercial,industrial, and automotives areas.

We are looking forward to setting up business relationship with you and hope to provide you with the best service and solution. Let us make a better world for our industry!



## Contact us

Tel: +86-755-8981 8866 Fax: +86-755-8427 6832

Email & Skype: info@chipsmall.com Web: www.chipsmall.com

Address: A1208, Overseas Decoration Building, #122 Zhenhua RD., Futian, Shenzhen, China



1

2

3

4

5

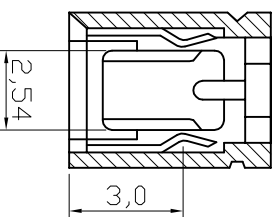
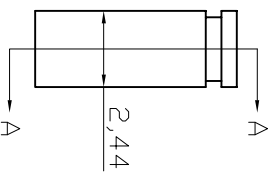
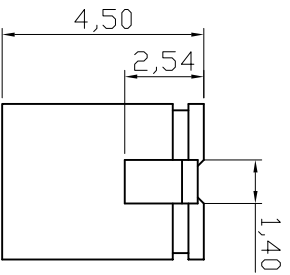
6

7

A

## NOTES:

1. Insulation: 30% Glass Filled PBT, UL94V-0, Color Black
2. Contact : Brass
3. Current Rating: 3A Max
4. Dielectric Voltage: 1000V rms / 1 minute
5. Insulation Resistance: 1000M ohm Min.
6. Contact Resistance: 30m ohm Max.
7. Operating and Storage Temperature: -40°C ~ +105°C
8. Mating Cycles: 10 Min.

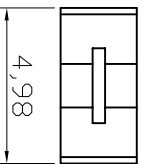


Contact Point

AKSNT/x BLACK

Contact Area Plating: ③  
 G: Gold Flash  
 Z: Tinned

D



E

E

F

F

**RoHS compliant**  
 Unit:mm

Scale	Free											
TOLERANCE												
.X	±0.38			Drawn	Date	03.03.2004	Name	Hellwig	Customer-No.	ASSMANN WSW-No.	AKSNT/G BLACK	G
.XX	±0.25			Approved	07.06.2013		Winnie			AKSNT/Z BLACK		
.XXX	±0.13	③	Update		07.06.2013		Winnie					
DIM	TOL	②	Update		27.07.2009		Rate					
X. °	±1°											
Angle	TOL	①	Drawn		03.03.2004		Hellwig					
UNIT	mm		Id.	Modification	Date		Name					

1

2

3

4

5

6

7

H

H

**ASSMANN**  
 WSW/ components

Drawing-No.  
 ASS 1004 CO

rev03

Replace

SHEET