



Chipsmall Limited consists of a professional team with an average of over 10 year of expertise in the distribution of electronic components. Based in Hongkong, we have already established firm and mutual-benefit business relationships with customers from,Europe,America and south Asia,supplying obsolete and hard-to-find components to meet their specific needs.

With the principle of “Quality Parts,Customers Priority,Honest Operation,and Considerate Service”,our business mainly focus on the distribution of electronic components. Line cards we deal with include Microchip,ALPS,ROHM,Xilinx,Pulse,ON,Everlight and Freescale. Main products comprise IC,Modules,Potentiometer,IC Socket,Relay,Connector.Our parts cover such applications as commercial,industrial, and automotives areas.

We are looking forward to setting up business relationship with you and hope to provide you with the best service and solution. Let us make a better world for our industry!



Contact us

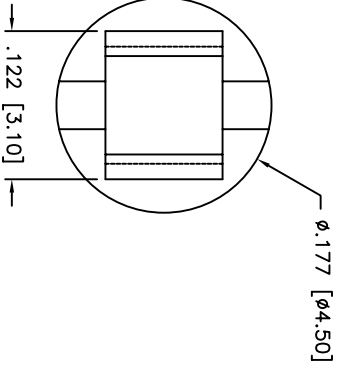
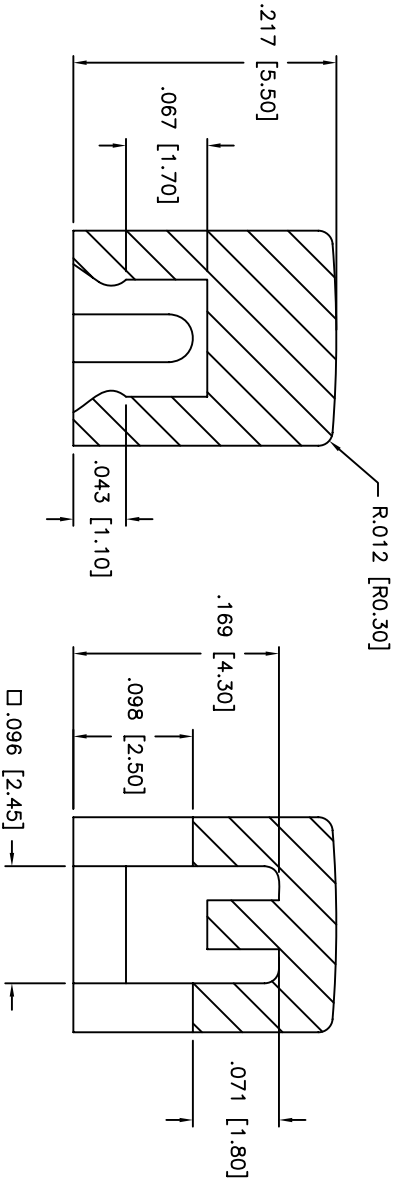
Tel: +86-755-8981 8866 Fax: +86-755-8427 6832

Email & Skype: info@chipsmall.com Web: www.chipsmall.com

Address: A1208, Overseas Decoration Building, #122 Zhenhua RD., Futian, Shenzhen, China



THIS DOCUMENT IS THE PROPERTY OF APEN COMPONENTS AND SHALL NOT BE COPIED, REPRODUCED, DISCLOSED OR USED AS THE BASIS FOR MANUFACTURING OR SALE WITHOUT PERMISSION OF A DULY AUTHORIZED REPRESENTATIVE OF APEN COMPONENTS INC.



DESCRIPTION: SMALL ROUND CAP FOR USE WITH ADTS*644 SWITCHES

MATERIAL: THERMOPLASTIC (ABS)

- NOTES:
 1. EXAMPLE PART NO.: AKTSC62K IS A ROUND BLACK CAP.
 2. CAP FITS ADTS SERIES

PART NO.	COLOR
B	BLUE
K	BLACK
G	GREEN
Y	YELLOW
R	RED
I	IVORY
GE	GRAY
S	SALMON

DATE	SYM	REVISION RECORD	DWN.	CK.

Q.A. INSECT: DESIGNATES CRITICAL DIMENSION

TOLERANCES (UNLESS OTHERWISE SPECIFIED)
 .XX = ±.02 [0.05]
 .XXX = ±.008 [0.20]
 .XXXX = ±.0008 [0.02]
 ANGLE = ±0.5°

APEN APEN COMPONENTS, INC.
 63 Neck Rd. 01835
 Hopkinton, MA
 Phone: 508-372-3554

DRN: CJD
 BR: PJD
 OR: PJD

TITLE SMALL ROUND CAP

DATE 3/14/07 **DRAWING NO.** AKTSC62*

DO NOT SCALE FROM THIS DRAWING

REV: A