



Chipsmall Limited consists of a professional team with an average of over 10 year of expertise in the distribution of electronic components. Based in Hongkong, we have already established firm and mutual-benefit business relationships with customers from,Europe,America and south Asia,supplying obsolete and hard-to-find components to meet their specific needs.

With the principle of “Quality Parts,Customers Priority,Honest Operation,and Considerate Service”,our business mainly focus on the distribution of electronic components. Line cards we deal with include Microchip,ALPS,ROHM,Xilinx,Pulse,ON,Everlight and Freescale. Main products comprise IC,Modules,Potentiometer,IC Socket,Relay,Connector.Our parts cover such applications as commercial,industrial, and automotives areas.

We are looking forward to setting up business relationship with you and hope to provide you with the best service and solution. Let us make a better world for our industry!



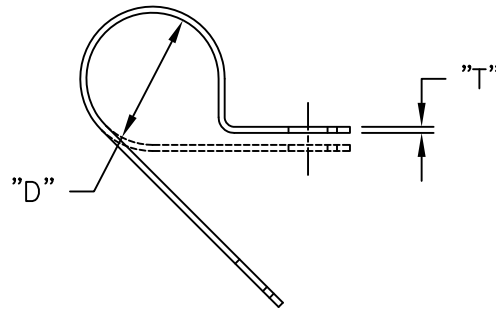
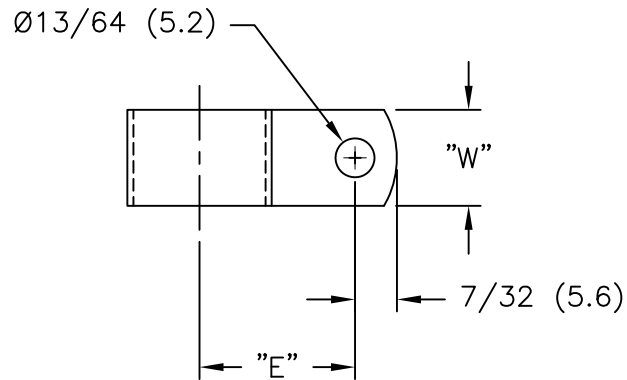
Contact us

Tel: +86-755-8981 8866 Fax: +86-755-8427 6832

Email & Skype: info@chipsmall.com Web: www.chipsmall.com

Address: A1208, Overseas Decoration Building, #122 Zhenhua RD., Futian, Shenzhen, China





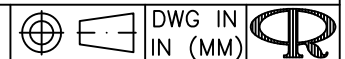
PART NO.	HOLDING DIA. "D"	"E" REF.	"T"	"W"
AL2A	1/8 (3.2)	.46 (11.7)	1/32 (0.8)	3/8 (9.5)
AL3A	3/16 (4.8)	.50 (12.7)		
AL4A	1/4 (6.4)	.53 (13.5)		
AL5A	5/16 (7.9)	.56 (14.2)		
AL6A	3/8 (9.5)	.59 (15.0)		
AL7A	7/16 (11.1)	.62 (15.7)		
AL8A	1/2 (12.7)	.65 (16.5)		
AL9A	9/16 (14.3)	.75 (19.1)		
AL10A	5/8 (15.9)	.78 (19.8)		
AL11	11/16 (17.5)	.81 (20.6)		
AL12	3/4 (19.1)	.84 (21.3)		
AL14	7/8 (22.2)	.90 (22.9)		
*AL15	15/16 (23.8)	.93 (23.6)		
AL16	1 (25.4)	.96 (24.4)		
AL18	1-1/8 (28.6)	1.05 (26.7)		
AL20	1-1/4 (31.8)	1.11 (28.2)		

*PARTS AVAILABLE BY SPECIAL ORDER ONLY.

NOTES:

- MAT'L: ALUMINUM ALLOY 5052 H-32 (RMS-199)

TITLE: CABLE CLAMPS, ALUMINUM



DWG IN IN (MM)



REV	DESCRIPTION	ENGR	DATE
E	SEE CO 200508 FOR CHANGES	SK	03.11.10
D	SEE CO 200432 FOR CHANGES	SK	09.08.09
C	SEE ECN #927 FOR CHANGES	SK	01.31.05
B	DRAWING UPDATED AND CHANGED FILE NO.	SM	09.26.01
A	CONVERTED TO ACAD	PB	01.18.95

TOLERANCES UNLESS NOTED
 .XX=±.010
 .XXX=±.005
 FRAC=±1/64
 ANG=±1°

FILE # AL
 MAT'L: SEE NOTES
 RE: RICHCO, INC.

DWN: P.B.
 DT: 01-18-95
 APP:
 DT:
 RICHCO INC.
 PO BOX 804238, CHICAGO, 60680
 (773) 539-4060

FINAL.
 PART #
 AL SERIES

PRINT TYPE
 CA