



Chipsmall Limited consists of a professional team with an average of over 10 year of expertise in the distribution of electronic components. Based in Hongkong, we have already established firm and mutual-benefit business relationships with customers from,Europe,America and south Asia,supplying obsolete and hard-to-find components to meet their specific needs.

With the principle of “Quality Parts,Customers Priority,Honest Operation,and Considerate Service”,our business mainly focus on the distribution of electronic components. Line cards we deal with include Microchip,ALPS,ROHM,Xilinx,Pulse,ON,Everlight and Freescale. Main products comprise IC,Modules,Potentiometer,IC Socket,Relay,Connector.Our parts cover such applications as commercial,industrial, and automotives areas.

We are looking forward to setting up business relationship with you and hope to provide you with the best service and solution. Let us make a better world for our industry!



Contact us

Tel: +86-755-8981 8866 Fax: +86-755-8427 6832

Email & Skype: info@chipsmall.com Web: www.chipsmall.com

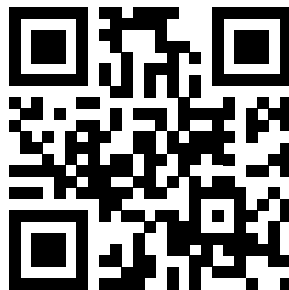
Address: A1208, Overseas Decoration Building, #122 Zhenhua RD., Futian, Shenzhen, China



Low to Mid Voltage Solid Aluminum Conductive Polymer Surface Mount Capacitors

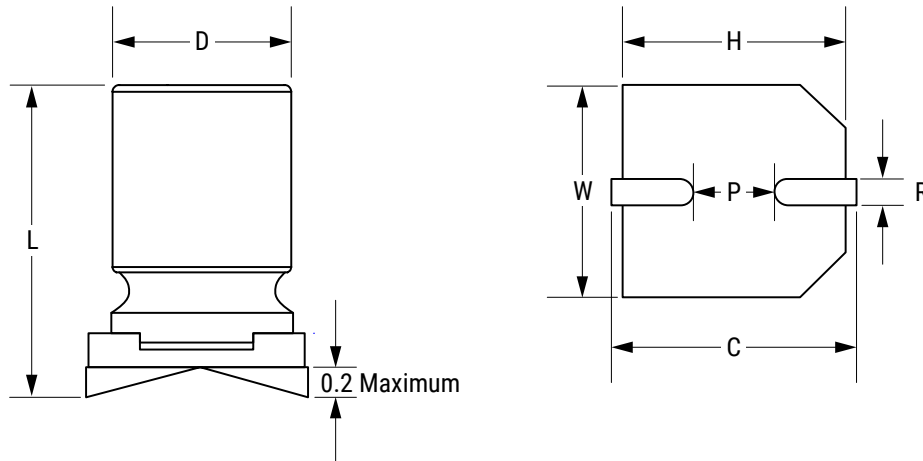
Sample Kit Contents

KEMET Part Number	VDC	VDC Surge Voltage	Rated Capacitance 120 Hz 20°C (µF)	Case Size D x L (mm)	ESR 100 kHz 20°C (mΩ)	RC 100 kHz 105°C (mA)	LC 20°C 2 Minutes (µA)	Quantity
A765EB397M0ELAE020	2.5	2.9	390	6.3 x 5.7	20	2,800	300	5
A765KN108M0ELAE012	2.5	2.9	1000	8 x 9.7	12	4,260	500	5
A765BC107M0JLAE025	6.3	7.2	100	5 x 6	25	1,700	300	5
A765BG227M0JLAE020	6.3	7.2	220	5 x 7	20	2,700	300	5
A765EB227M0JLAE020	6.3	7.2	220	6.3 x 5.7	20	2,800	300	5
A765KH477M0JLAE016	6.3	7.2	470	8 x 7.5	16	3,220	592	5
A765KN687M0JLAE012	6.3	7.2	680	8 x 9.7	12	5,000	857	5
A765MU158M0JLAE010	6.3	7.2	1,500	10 x 12.6	10	4,100	1,890	5
A765EB157M1ALAE022	10	11.5	150	6.3 x 5.7	22	2,320	300	5
A765KN277M1ALAE020	10	11.5	270	8 x 9.7	20	3,600	540	5
A765MU687M1ALAE013	10	11.5	680	10 x 12.6	13	3,800	1,360	5
A765EB107M1CLAE025	16	18.4	100	6.3 x 5.7	25	2,500	320	5
A765EG157M1CLAE027	16	18.4	150	6.3 x 7	27	2,530	480	5
A765KN227M1CLAE016	16	18.4	220	8 x 9.7	16	3,700	704	5
A765KN277M1CLAE016	16	18.4	270	8 x 9.7	16	3,890	864	5
A765KN337M1CLAE016	16	18.4	330	8 x 9.7	16	3,890	1,056	5
A765MU108M1CLAE018	16	18.4	1000	10 x 12.6	18	4,300	3,200	5
A765EB476M1ELAE040	25	28.7	47	6.3 x 5.7	40	1,200	300	5
A765KN826M1ELAE029	25	28.7	82	8 x 9.7	29	2,700	410	5
A765KN107M1ELAE024	25	28.7	100	8 x 9.7	24	3,300	500	5
A765MU157M1ELAE050	25	28.7	150	10 x 12.6	50	3,800	750	5
A765MU227M1ELAE050	25	28.7	220	10 x 12.6	50	3,800	1,100	5
A765MU337M1ELAE020	25	28.7	330	10 x 12.6	20	2,890	1,650	5



www.kemet.com/A765

Dimensions – Millimeters



Size Code	D		L		W		H		C		R	P
	Nominal	Tolerance	Nominal	Tolerance	Nominal	Tolerance	Nominal	Tolerance	Nominal	Tolerance	Nominal	Nominal
BC	5	±0.5	6	±0.3	5.3	±0.2	5.3	±0.2	6.0	±0.2	0.5 - 0.8	1.4
BG	5	±0.5	7	±0.3	5.3	±0.2	5.3	±0.2	6.0	±0.2	0.5 - 0.8	1.4
EB	6.3	±0.5	5.7	±0.3	6.6	±0.2	6.6	±0.2	7.3	±0.2	0.5 - 0.8	2.1
EG	6.3	±0.5	7	±0.3	6.6	±0.2	6.6	±0.2	7.3	±0.2	0.5 - 0.8	2.1
EK	6.3	±0.5	8	±0.3	6.6	±0.2	6.6	±0.2	7.3	±0.2	0.5 - 0.8	2.1
EN	6.3	±0.5	9.7	±0.3	6.6	±0.2	6.6	±0.2	7.3	±0.2	0.5 - 0.8	2.1
KH	8	±0.5	7.5	±0.3	8.3	±0.2	8.3	±0.2	9.0	±0.2	0.8 - 1.1	3.2
KN	8	±0.5	9.7	±0.3	8.3	±0.2	8.3	±0.2	9.0	±0.2	0.8 - 1.1	3.2
MU	10	±0.5	12.6	±0.3	10.3	±0.2	10.3	±0.2	11.0	±0.2	0.8 - 1.1	4.6