



Chipsmall Limited consists of a professional team with an average of over 10 year of expertise in the distribution of electronic components. Based in Hongkong, we have already established firm and mutual-benefit business relationships with customers from,Europe,America and south Asia,supplying obsolete and hard-to-find components to meet their specific needs.

With the principle of “Quality Parts,Customers Priority,Honest Operation,and Considerate Service”,our business mainly focus on the distribution of electronic components. Line cards we deal with include Microchip,ALPS,ROHM,Xilinx,Pulse,ON,Everlight and Freescale. Main products comprise IC,Modules,Potentiometer,IC Socket,Relay,Connector.Our parts cover such applications as commercial,industrial, and automotives areas.

We are looking forward to setting up business relationship with you and hope to provide you with the best service and solution. Let us make a better world for our industry!



Contact us

Tel: +86-755-8981 8866 Fax: +86-755-8427 6832

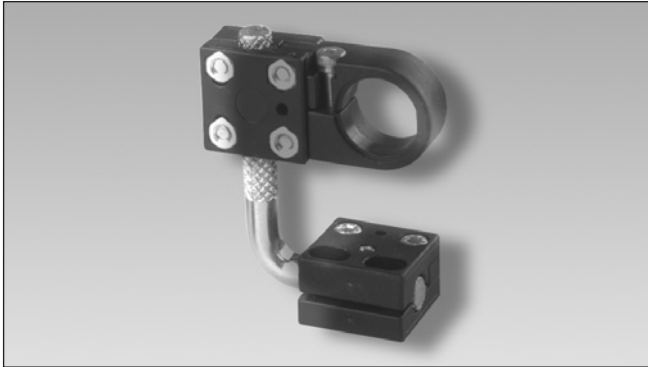
Email & Skype: info@chipsmall.com Web: www.chipsmall.com

Address: A1208, Overseas Decoration Building, #122 Zhenhua RD., Futian, Shenzhen, China



Photoelectrics Accessories Type AMB4-30, Mounting Bracket

CARLO GAVAZZI



- Secure fixing
- Simple mounting
- Mounting head and foot may be independently rotated through 360°
- Robust construction
- 5 adaptor bushes for sensors Ø4, Ø5, Ø8, Ø12 and Ø14 mm
- 2 mounting heads for Ø18 or Ø30 mm

Product Description

Universal mounting for all cylindrical sensors with Ø4 to Ø30 mm. The mounting adaptor is supplied complete with 2 mounting heads (Ø18 and Ø30 mm) and 5 adaptor bushes (Ø4, Ø5, Ø8, Ø12 and Ø14 mm).

Ordering Key

AMB 4-30

Mounting bracket _____
Diameter _____

Type Selection

For sensors with diameter	Ordering no.
4 to 30 mm	AMB4-30

Specifications

Material
Plast parts
Fasteners
Pin
Fixing screws and nuts

Nylon 66, black
Stainless steel
Zinc plated, knurled
Zinc plated

Delivery Contents

- Mounting bracket AMB4-30 including 5 adaptor bushes
- Two M4 x 20 mm screws
- Two M4 nuts

Dimensions

