



Chipsmall Limited consists of a professional team with an average of over 10 year of expertise in the distribution of electronic components. Based in Hongkong, we have already established firm and mutual-benefit business relationships with customers from,Europe,America and south Asia,supplying obsolete and hard-to-find components to meet their specific needs.

With the principle of “Quality Parts,Customers Priority,Honest Operation,and Considerate Service”,our business mainly focus on the distribution of electronic components. Line cards we deal with include Microchip,ALPS,ROHM,Xilinx,Pulse,ON,Everlight and Freescale. Main products comprise IC,Modules,Potentiometer,IC Socket,Relay,Connector.Our parts cover such applications as commercial,industrial, and automotives areas.

We are looking forward to setting up business relationship with you and hope to provide you with the best service and solution. Let us make a better world for our industry!



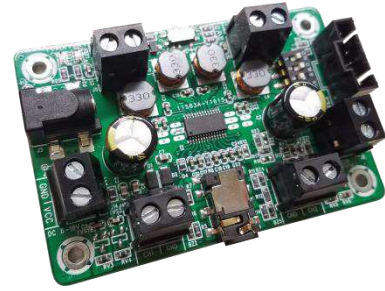
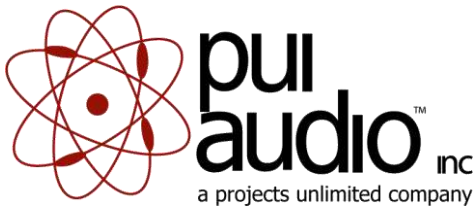
Contact us

Tel: +86-755-8981 8866 Fax: +86-755-8427 6832

Email & Skype: info@chipsmall.com Web: www.chipsmall.com

Address: A1208, Overseas Decoration Building, #122 Zhenhua RD., Futian, Shenzhen, China





User's Guide and Specifications

AMP2X15 Audio Amplifier Board

PUI Audio's **AMP2X15** audio amplifier board features a Texas Instruments' TPA3110D2 Class D amplifier circuit for maximum signal fidelity; delivering 6 Watts per channel of low-distortion power (0.1% THD+N) into 4Ω loads; 15 watts per channel into 8Ω loads (10% THD+N with 16 VDC supply).

The **AMP2X15** is purpose-built to aid and assist engineers in prototyping audio solutions for a multitude of applications, and offers single-ended and differential inputs with stereo BTL or mono PBTL outputs.

Features:

- Small form factor—76.2mm x 50.8mm x 20mm (L x W x H)
- Wide +9.5V to +20V DC input range (power supply not included)
- Three different input connections—stereo 3.5mm jack, terminal blocks, six-circuit Molex® SL™ 70543 connector
- Audiophile-grade sound quality
- Single-ended and differential inputs; stereo or mono output
- Built-in over-current and over-temperature protection

Note:

Please read this manual carefully before using this product. To keep the product in the best working condition, please operate it according to the relevant steps. Warranty is void if this product is misused.

Please read this manual carefully before you use the product. A DC power supply with 9.5V to 20V output (and a minimum of 2A of current capacity) is recommended to be used to power this product.

Safety Precautions:

1. In order to achieve the best sound quality, please use a stable power supply. A bad or unstable power supply will reduce the sound quality or even damage the amplifier board.
2. Avoid metal objects coming into contact with this product. Protect the solder joints on the bottom of the PCB when mounting this product.
3. Do not connect a pre-amplifier to the input of this product. Enough gain is provided to allow the amplifier to develop maximum power output. Doing so may damage the amplifier. Ensure the audio input signal is at a minimum when powering on the amplifier, to protect the amplifier and connected speakers.
4. Never expose this product to rain or extremely humid (>95% relative humidity) environments to prevent fire or electric shock.

Specifications

The following table lists all typical data of the PUI Audio Amplifier Board. For full specifications, please refer to the [Texas Instruments' TPA3110D2 technical specifications](#). All parameters below are tested @ TA=25°C, 12 VDC input voltage (unless otherwise stated), 1 kHz sine wave input, with gain set to 26 dB.

Parameter	Condition	Min.	Typ.	Max.
Supply Voltage (Vcc)	-	9.5V	12V	20V
Input Sensitivity	8Ω, 8W, 1kHz	-	0.428V	-
Signal-to-Noise Ratio	THD+ N < 1%, f = 1 kHz, 6W, 8Ω	-	94 dB	-
Total Harmonic Distortion + Noise	Vcc = 12 V, f = 1 kHz, Po = 5W (half-power)	-	0.06%	-
	RL = 8 Ω, f = 1 kHz, Po = 10W	-	10%	-
Efficiency	Vcc= 12 VDC, RL=8Ω, Pout= 8W	-	86.4%	-
	Vcc=12 VDC, RL=8Ω, Po= 10W	-	89%	-
Input Impedance	-	-	30 kOhm	-
Gain	-	-	26 dB	-
Output Power (Po) (per channel)	THD+N=10%, f = 1 kHz, Vcc=16 VDC, RL=8Ω	-	15W	-
	THD+N = 0.1%, f = 1 kHz; Vcc = 12 VDC, RL=4Ω, 0.7V input signal	-	6W	-
Frequency Response	-	-	20-20,000 Hz (±3dB)	-
Quiescent Current	SD = 2V, no load, Vcc = 12 VDC	-	20mA	35mA
Minimum Resistive Load (RL)	-	3.2 ohm	4 ohm	-
Operating Temperature	-	-40°C	20°C	65°C
Storage Temperature	-	-60°C	20°C	105°C
Thermal Shutdown	-	-	150°C	-

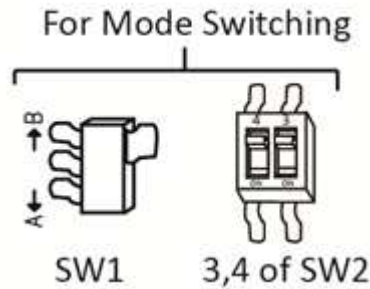
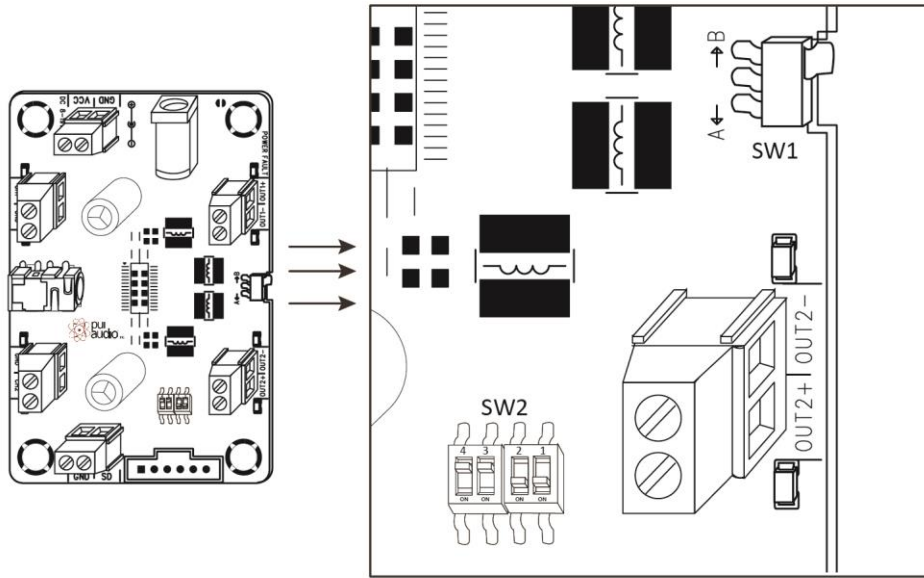
Setup

Output Mode and Input Mode Switching

This audio amplifier board supports switching between stereo (BTL) and mono (PBTL) modes, as well as single-ended (V0-p) and differential (Vp-p) inputs. Two switches control the operation of these modes on the amplifier board.

Stereo (BTL) and mono (PBTL) modes are controlled by the position of SW1 (A or B) and SW2 dip switches 3 and 4.

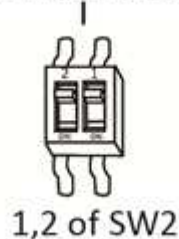
Output Mode	SW1	Dip switches 3&4 on SW2
Stereo	B (right position)	OFF (bottom position)
Mono	A (left position)	ON (top position)



The input method can be set to single-ended (V0-p) inputs or differential (Vp-p) inputs and is controlled by dip switches 1 and 2 on SW2.

Input Mode	Dip switches 3&4 on SW2
Single-ended	OFF (bottom position)
Differential	ON (top position)

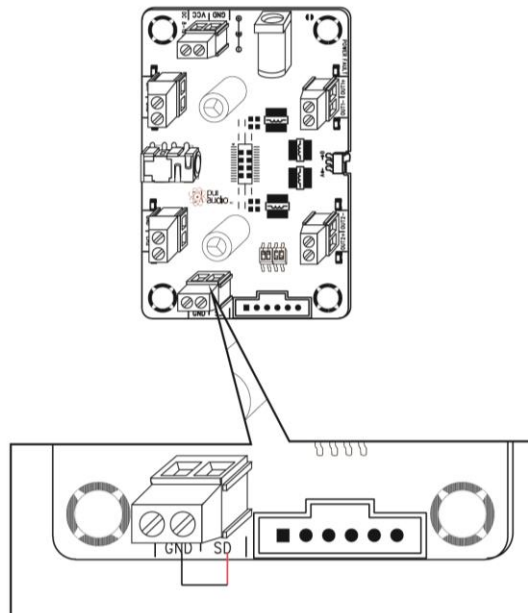
For Input Method Switching



For most stereo consumer audio sources (smartphones, MP3 players, etc.) select single-ended input.

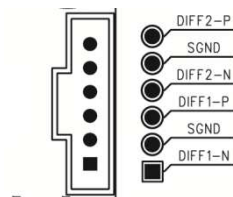
Audio Amplifier Board Mute Control

This audio amplifier board allows the user to put it into shutdown/mute mode. To do so, short the SD and GND connections of J2s Phoenix-type terminal blocks. A single-throw, single-pull (SPST) switch can be connected to these two connections for control of the amplifier board's mute function.

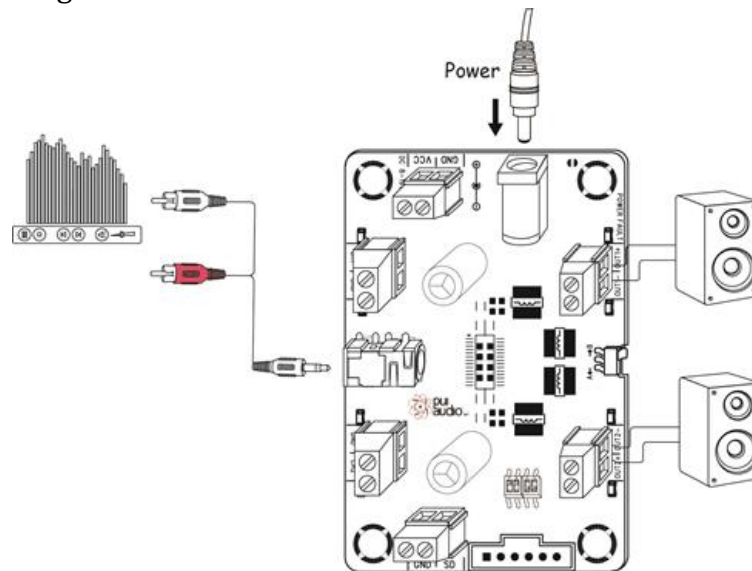


Stereo/Two Channel Connection

1. Set the Output Mode to BTL and Input Mode to match the single input type.
2. Connect your stereo audio source:
 - A) A stereo 3.5mm audio jack is provided for easy connection to your stereo audio source, such as a smartphone, MP3 player, or computer.
 - B) Two Phoenix-type screw terminal blocks on either side of the stereo 3.5mm jack (J4 and J8) may also be used to connect to your audio source. Ensure polarity is observed when using these terminal blocks (+ on outside terminations).
 - C) A six-circuit Molex® SL™ 70543 connector is also provided for differential audio signal input.



3. Connect your speakers to the Phoenix-type screw terminal blocks, J5 & J7 opposite the stereo 3.5mm jack, ensuring polarity is observed (+ on outside terminations) for best bass response.
4. A 2.1mm x 5.5mm center-positive DC power jack is provided for quick power supply connection. Simply connect your 8 VDC to 19 VDC power supply, and the POWER LED will illuminate green.

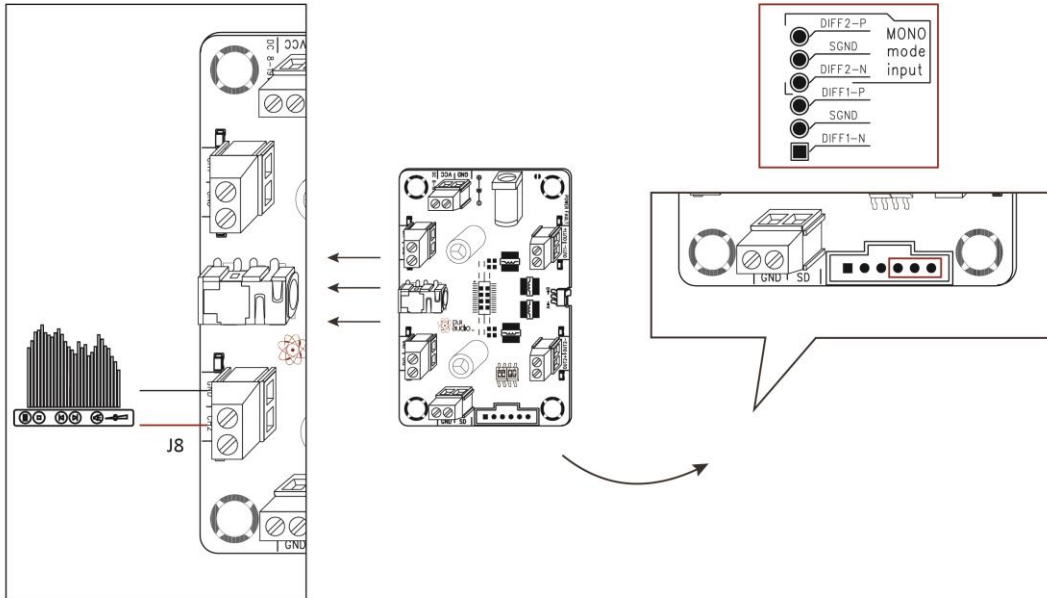


The gain on this amplifier board is fixed at 26 dB. Please use your audio source device's volume control to adjust the amplifier output. Alternatively, you can connect a 25 kOhm audio taper potentiometer between the audio source device and amplifier for the purpose of volume control.

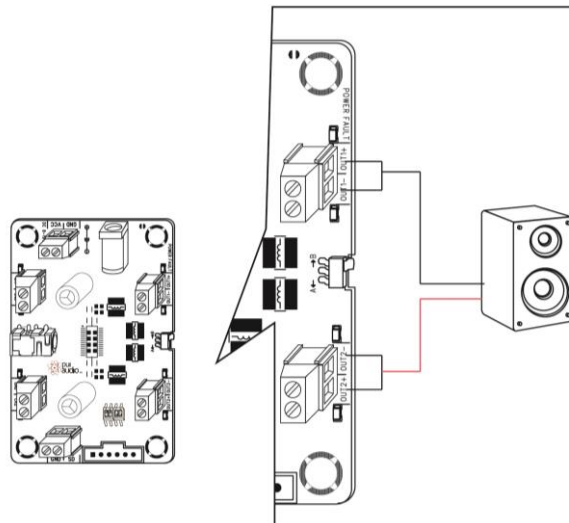
Note: Only use one group of audio inputs at a time.

Mono/One Channel Connection

1. Set the Output Mode to PBTL and Input Mode to match the single input type.
2. Connect your audio source:
 - A) Phoenix-type terminal block J8 (only) for a mono audio source.
 - B) Use the first three pins of the six-circuit connector for a mono audio source.



3. For best performance, short OUT1+ to OUT1- (J5) and connect the speaker's negative to either OUT1+ or OUT1-. Short OUT2+ to OUT2- (J7) and connect the speaker's negative to either OUT2+ or OUT2-.

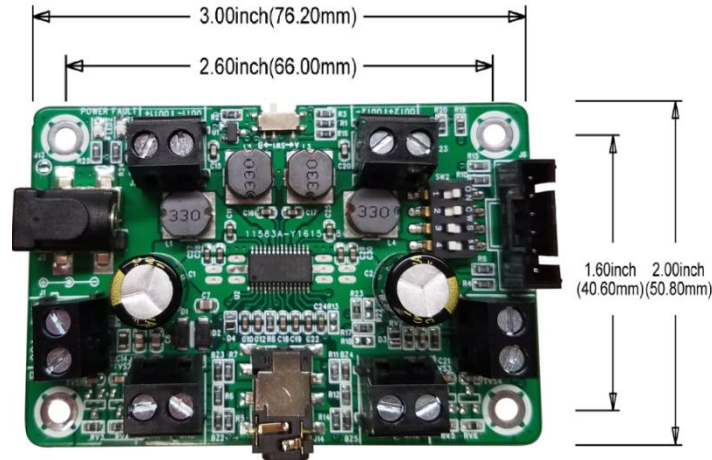


4. Connect your 8 VDC to 19 VDC power supply to the DC power jack. The POWER LED will illuminate green.



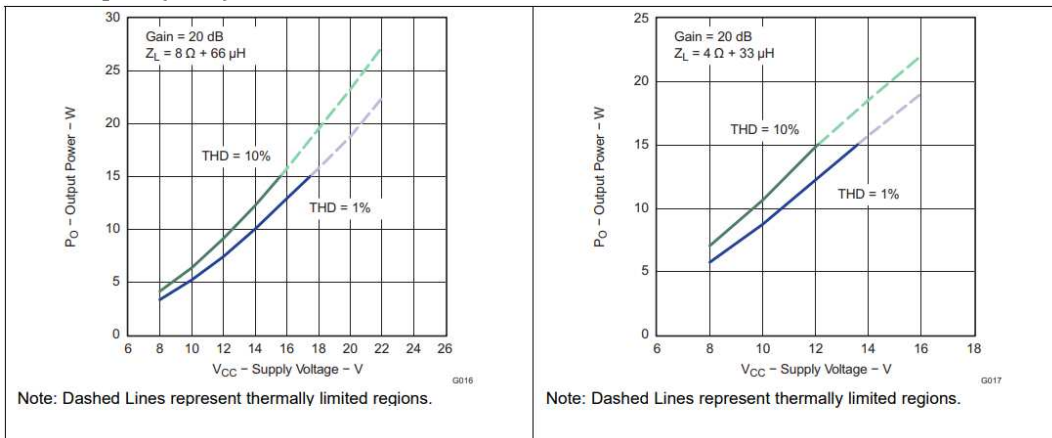
Note: Only use one audio input at a time.

Dimensions

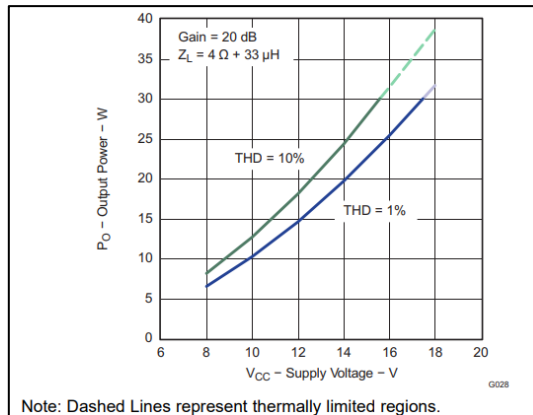


Output Power vs Supply Voltage

Stereo Speaker Output (BTL)



Mono Speaker Output (PBTL)



Fault Indication Light

In the event that the input/output mode is incorrectly set (a dipswitch in the wrong position) or an overcurrent condition exists, the fault indication LED will illuminate and amplifier operation will cease. Remove power, correct the fault condition, and reapply power to clear the fault and resume amplifier operation.



Specifications Revisions

Revision	Description	Date
-	Released from Engineering	2/19/18

Note:

1. Unless otherwise specified:
 - A. All dimensions are in millimeters.
 - B. Default tolerances are $\pm 0.5\text{mm}$ and angles are $\pm 3^\circ$.
2. Specifications subject to change or withdrawal without notice.
3. This part is RoHS 2011/65/EU Compliant.